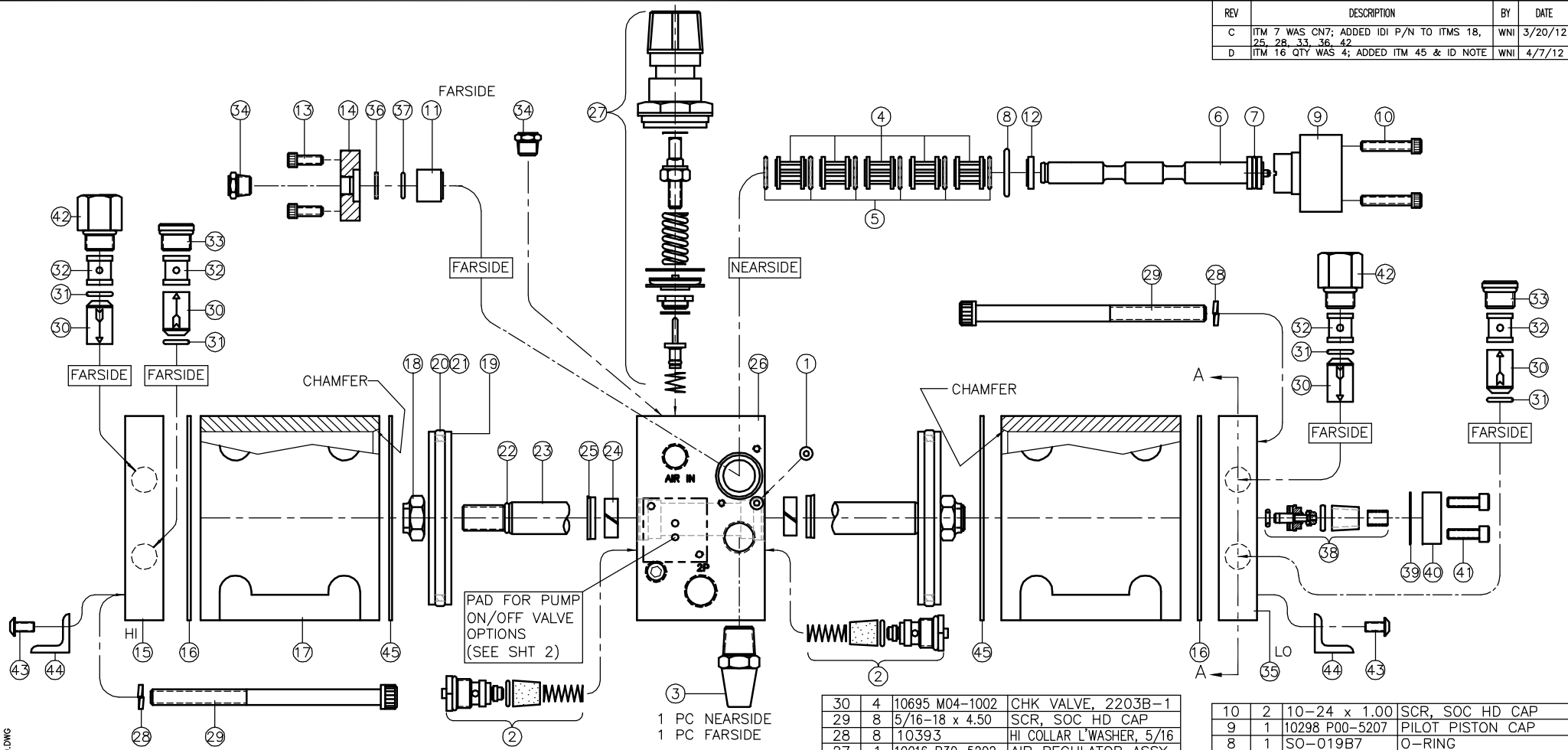


REV	DESCRIPTION	BY	DATE
C	ITM 7 WAS CN7; ADDED IDI P/N TO ITMS 18, 25, 28, 33, 36, 42	WNI	3/20/12
D	ITM 16 QTY WAS 4; ADDED ITM 45 & ID NOTE	WNI	4/7/12



File Name: Z:\Programs\_Accordwgs\AIRAMP\1101\1P29-1001-D.DWG

ID NOTE: ITM 45 HAS MORE HOLES THAN ITEM 16

ITEM	QTY	PART NUMBER	DESCRIPTION
45	2	10334 P00-5205	AIR BODY GASKET
44	2	10262 P00-5801	MOUNTING BRACKET
43	4	1/4-20 x .38	BUTT HD CAP SCR
42	2	12481	FEMALE PIPE ADAPTER
41	1	10-24 x 0.62	SOC HD CAP SCR
40	1	11566 P30-5603	BLOCK, LUNGE VALVE
39	1	11567 P30-5604	GASKET
38	1	11569 V04-1009	2-WAY LUNGE VALVE
37	1	SO-012P7	O-RING
36	1	11753	BACKUP RING, SOLID, -012
35	1	10283 P30-5602	CK VALVE CAP, LO
34	2	10264	BREATHER
33	2	11779	HOLLOW HEX PLUG, -6 SAE
32	4	10605 P00-5603	RETAINER, 0.56 OAL
31	4	SO-012B7	O-RING

30	4	10695 M04-1002	CHK VALVE, 2203B-1
29	8	5/16-18 x 4.50	SCR, SOC HD CAP
28	8	10393	HI COLLAR L'WASHER, 5/16
27	1	10016 P30-5202	AIR REGULATOR ASSY
26	1	10873 P30-5201	BODY, AIR AMP
25	2	10886 M03-1008	VARISEAL, Ø0.625 ID
24	2	10645 M03-1031	SLYD RING
23	1	10616 P30-5202	SHAFT
22	2	SO-905B7	O-RING
21	2	SO-233B7	O-RING
20	2	10377	GLYD RING
19	2	10479 P00-5204	AIR PISTON
18	2	10439	NUT, FLEX-LOC, 1/2-20
17	2	10111 P12-5202	AIR CYL BODY
16	2	11662 P29-5201	AIR BODY GASKET
15	1	10282 P30-5601	CK VALVE CAP, HI
14	1	10299 P00-5208	SPOOL STOP CAP
13	2	10-24 x .50	SCR, SOC HD CAP
12	1	10271 P00-5212	SHORT BUSHING
11	1	10269 P00-5210	LONG BUSHING

10	2	10-24 x 1.00	SCR, SOC HD CAP
9	1	10298 P00-5207	PILOT PISTON CAP
8	1	SO-019B7	O-RING
7	1	SO-111B7	O-RING
6	1	10659 P00-5211	AIR SPOOL, UNBALANCED
5	6	10629	TEE-SEAL
4	5	10273 P00-5209	CAGE
3	REF	10431	MUFFLER
2	2	10017 V04-1005	2-WAY AIR VLV ASSY
1	2	SO-006B7	O-RING

ITEM QTY PART NUMBER DESCRIPTION

INTERFACE DEVICES, INC.  
230 DEPOT ROAD  
MILFORD, CT 06460

SCALE: 1/2 TITLE: ASSEMBLY, GA-54 1:1 GAS PUMP

DWN BY: WNI

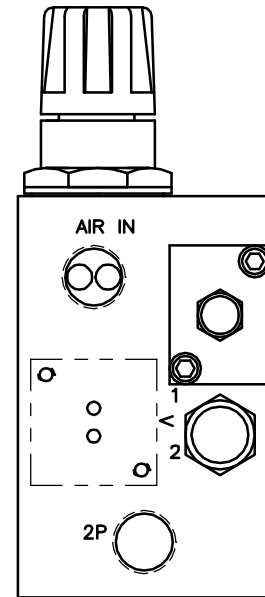
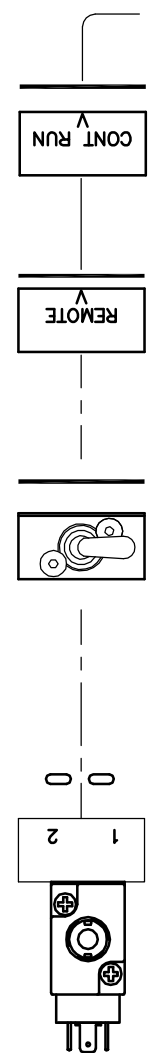
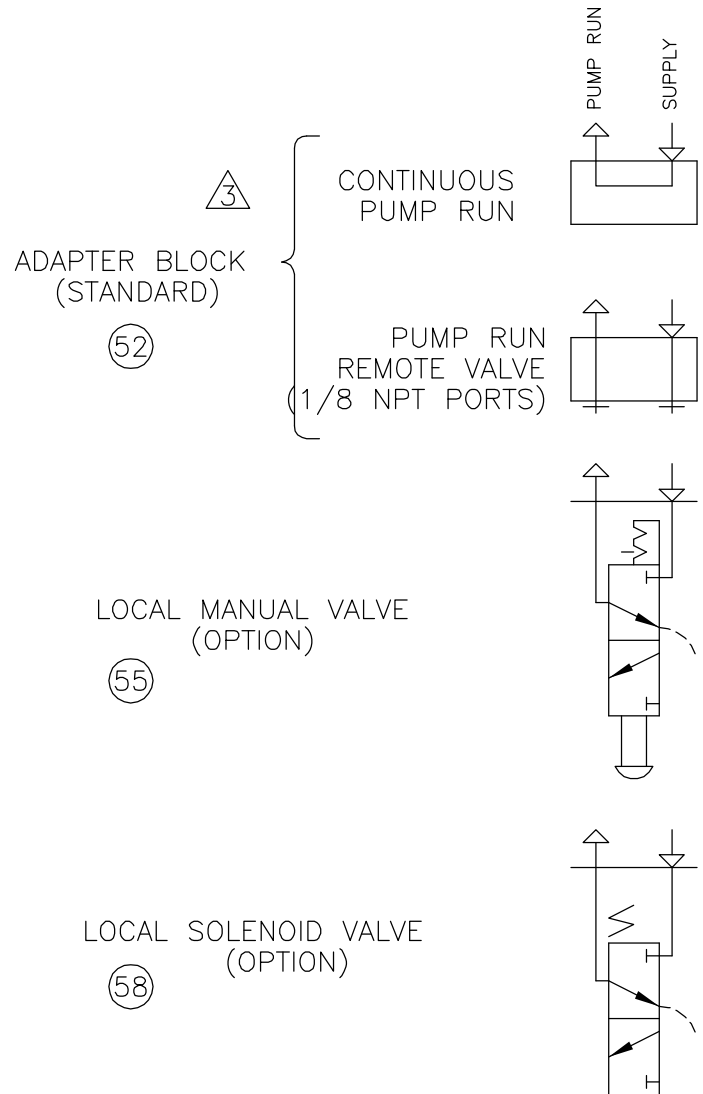
DATE: 8/22/03 REF:

SHT: 1 OF: 2 DWG NO: P29-1001 REV: D

ASSEMBLY PART NUMBER: 11310

NOTES

- 1 PORT 3 IS COMMON TO PORT 2.  
CONNECT PORT 3 TO REMOTE AIR PILOT OPERATED  
HYDRAULIC RELEASE VALVE
- 2 MOUNTING SCREWS AND GASKET/O-RINGS ARE  
FURNISHED FOR EACH OPTION
- 3 ROTATE ADAPTER BLOCK TO MATCH "V" STAMPED ON AIR CAP  
FOR THE DESIRED FUNCTION



VOLTAGE	ITEM 58 P/N
24 VDC	11837 V04-1003
120 VAC	11838 V04-1003
240 VAC	11919 V04-1003

OPTION	59			
	58	REF	SEE CHART	SOL AIR VALVE ASSY
	57			
OPTION	56			
	55	REF	10449 V04-1002	MAN TOGGLE SWITCH ASSY
	54			
STD	52	REF	11235 P00-1206	BLOCK ASSY, ADAPTER

ITEM	QTY	PART NUMBER	DESCRIPTION
INTERFACE DEVICES, INC. 230 DEPOT ROAD MILFORD, CT 06460			
SCALE: HALF		TITLE: ASSEMBLY, GA-54 GAS PUMP	
DWN BY: WNI		REF:	
DATE: 8/22/03		REF:	
SHT: 2	OF: 2	DWG NO: P29-1001	REV: D

File Name: Z:\Programs\Acaddwgs\AIRAMP\1to1\P29-1001-D.DWG