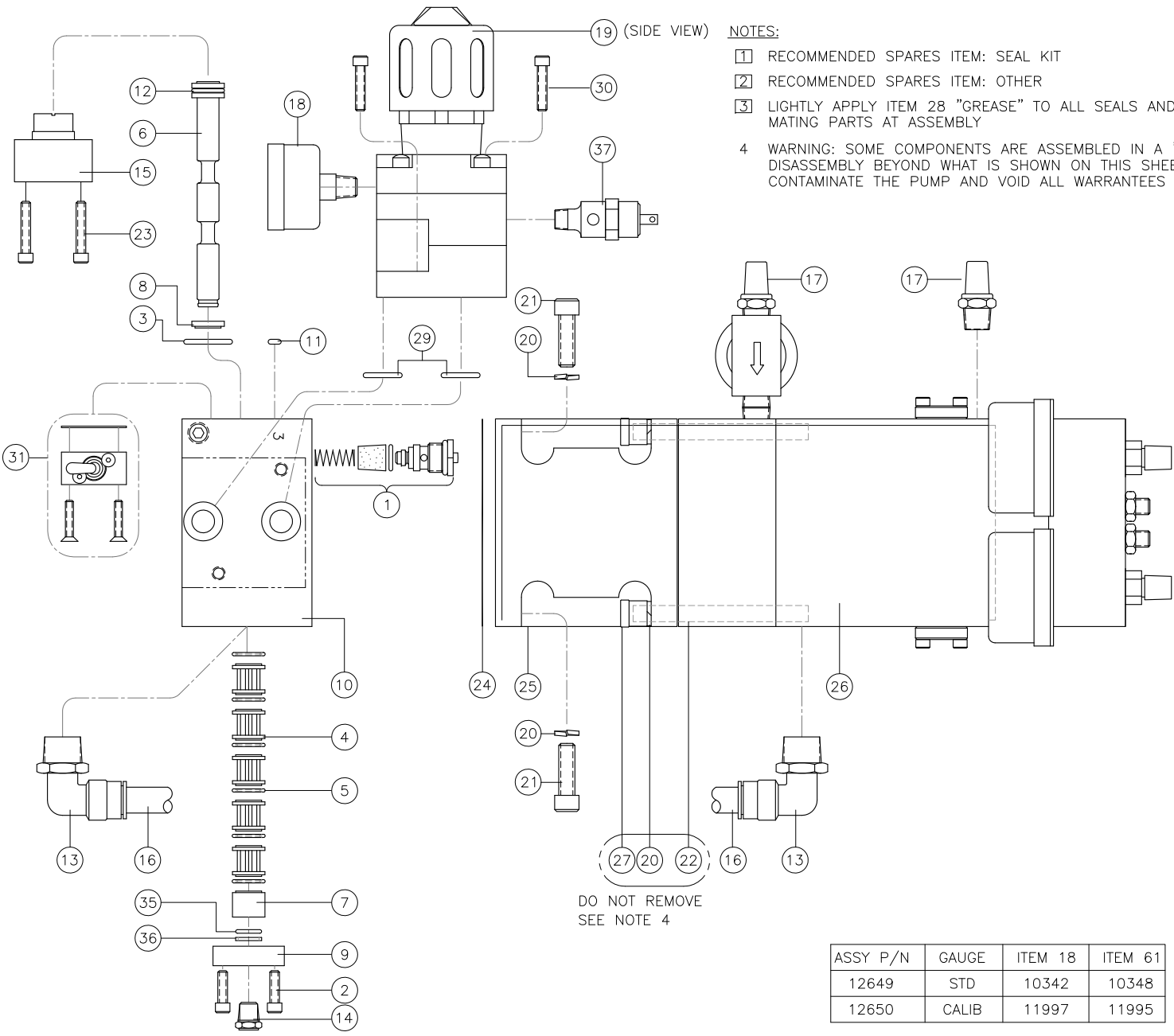


Z:\Programs\Acadwgs\GasBooster\02_2113\p33-1004--B.DWG Plotted: Dec 11, 2019 9:10AM



- NOTES:
- 1 RECOMMENDED SPARES ITEM: SEAL KIT
 - 2 RECOMMENDED SPARES ITEM: OTHER
 - 3 LIGHTLY APPLY ITEM 28 "GREASE" TO ALL SEALS AND MATING PARTS AT ASSEMBLY
 - 4 WARNING: SOME COMPONENTS ARE ASSEMBLED IN A "CLEAN" ROOM. DISASSEMBLY BEYOND WHAT IS SHOWN ON THIS SHEET WILL CONTAMINATE THE PUMP AND VOID ALL WARRANTIES

REV	DESCRIPTION	BY	DATE
A	ITM 41 WAS 11635 V04-1010	WNI	9/17/14
B	ITM 19 WAS 10015 P12-1202	WNI	9/17/18

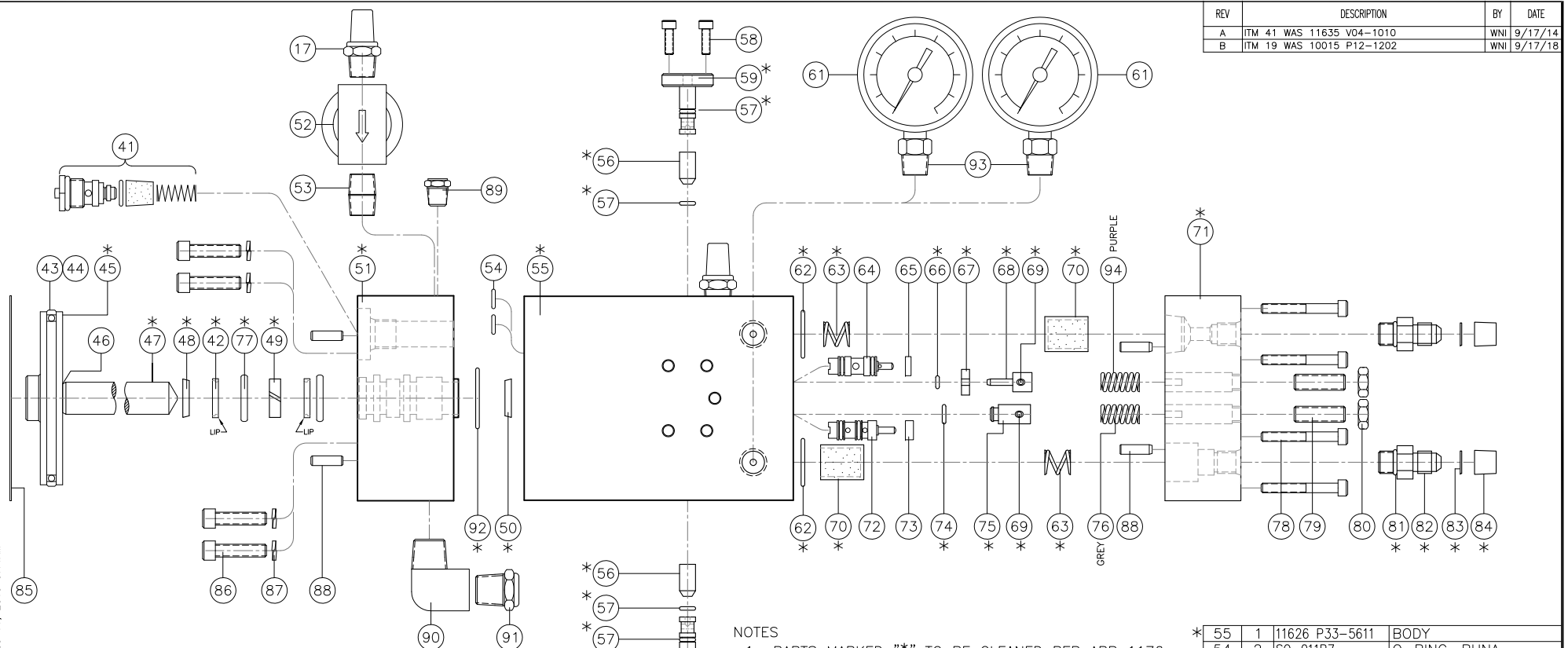
40			
39			
38			
37	1	11236 M04-1006	RELIEF VALVE, 1/8 NPT
36	1	11753	TEFLON BU RING, -012
35	1	SO-012P7	O-RING
34			
33			
32			
31	1	10743 V04-1001	VALVE ASSY, 3-W, TOGGLE
30	2	1/4-20 x .88	SCREW, SOC HD CAP, SS
29	2	SO-016B7	O-RING
28	A/R	MCG111	CHRISTO-LUBE GREASE
27	4	12039	ALLEN NUT, 5/16-18
26	1	11561 P33-5001	WARNING LABEL
25	1	10111 P12-5202	BODY, AIR CYLINDER
24	1	10334 P00-5205	GASKET, AIR BODY
23	2	10-24 x 1.00 SS	SCREW, SOC HD CAP, SS
22	4	10751 P33-5404	STUD, 5/16-18
21	4	5/16-18 x 1.00	SCREW, SOC HD CAP, SS
20	8	12271	L'WASHER, 5/16 HI C SS
19	1	12286 P12-1206	AIR REG ASSY
18	1	SEE CHART	AIR GAUGE (0-160 PSI)
17	3	10429	MUFFLER, 1/4 NPT
16	5"	12019	TUBING, NYLON #.50 OD, GRN
15	1	10298 P00-5207	PILOT CAP
14	1	10264	BREATHER, 1/8 NPT
13	2	12016	MALE ELBOW, 6520-08-08
12	1	SO-111B7	O-RING
11	1	SO-006B7	O-RING
10	1	10004 P12-5201	AIR CAP HOUSING
9	1	10299 P00-5208	SPOOL CAP
8	1	10271 P00-5212	BUSHING, SHORT
7	1	10269 P00-5210	BUSHING, LONG
6	1	10942 P33-5201	AIR SPOOL
5	6	10629	TEE SEAL
4	5	10273 P00-5209	CAGE
3	1	SO-019B7	O-RING
2	2	10-24 x .62 SS	SCREW, SOC HD CAP, SS
1	1	10017 V04-1005	2-WAY AIR VLV ASSY

ASSY P/N	GAUGE	ITEM 18	ITEM 61
12649	STD	10342	10348
12650	CALIB	11997	11995

		INTERFACE DEVICES, INC. 230 DEPOT ROAD MILFORD, CT 06460	
SCALE: 1/2	TITLE: O2 BOOSTER, BILL OF MATERIALS		
DWN BY: WNI			
DATE: 2/1/13	REF: 2013 Version		
SHT: 1 OF: 2	DWG NO: P33-1004	REV: B	

2013 VERSION

REV	DESCRIPTION	BY	DATE
A	ITM 41 WAS 11635 V04-1010	WNI	9/17/14
B	ITM 19 WAS 10015 P12-1202	WNI	9/17/18



ASSY P/N	GAUGE	ITEM 18	ITEM 61
12649	STD	10342	10348
12650	CALIB	11997	11995

NOTES

- 1 PARTS MARKED "*" TO BE CLEANED PER ARP 1176 CATEGORY 1B-200A
- 2 WARNING: COMPONENTS SHOWN ON THIS SHEET ARE ASSEMBLED IN A "CLEAN" ROOM. DISASSEMBLY BY UNAUTHORIZED INDIVIDUALS WILL CONTAMINATE THE PUMP AND VOID ALL WARRANTIES

ITEM	QTY	PART NUMBER	DESCRIPTION
94	1	11737 M01-1002	SPRING, MW (PURPLE)
93	A/R	MIL-T-27730A	TEFLON TAPE
92	1	SO-023V7	O-RING, VITON
91	1	10265 M04-1021	BREATHER, 3/8 NPT
90	1	12089	STREET EL, 3/8 NPT, BRASS
89	2	10264	BREATHER, 1/8 NPT
88	4	11772	DOWEL PIN, .18 X .62, SS
87	4	12270	L'WASHER, 1/4 HI COL, SS
86	4	1/4-28 x 1.00	SHCS, SS

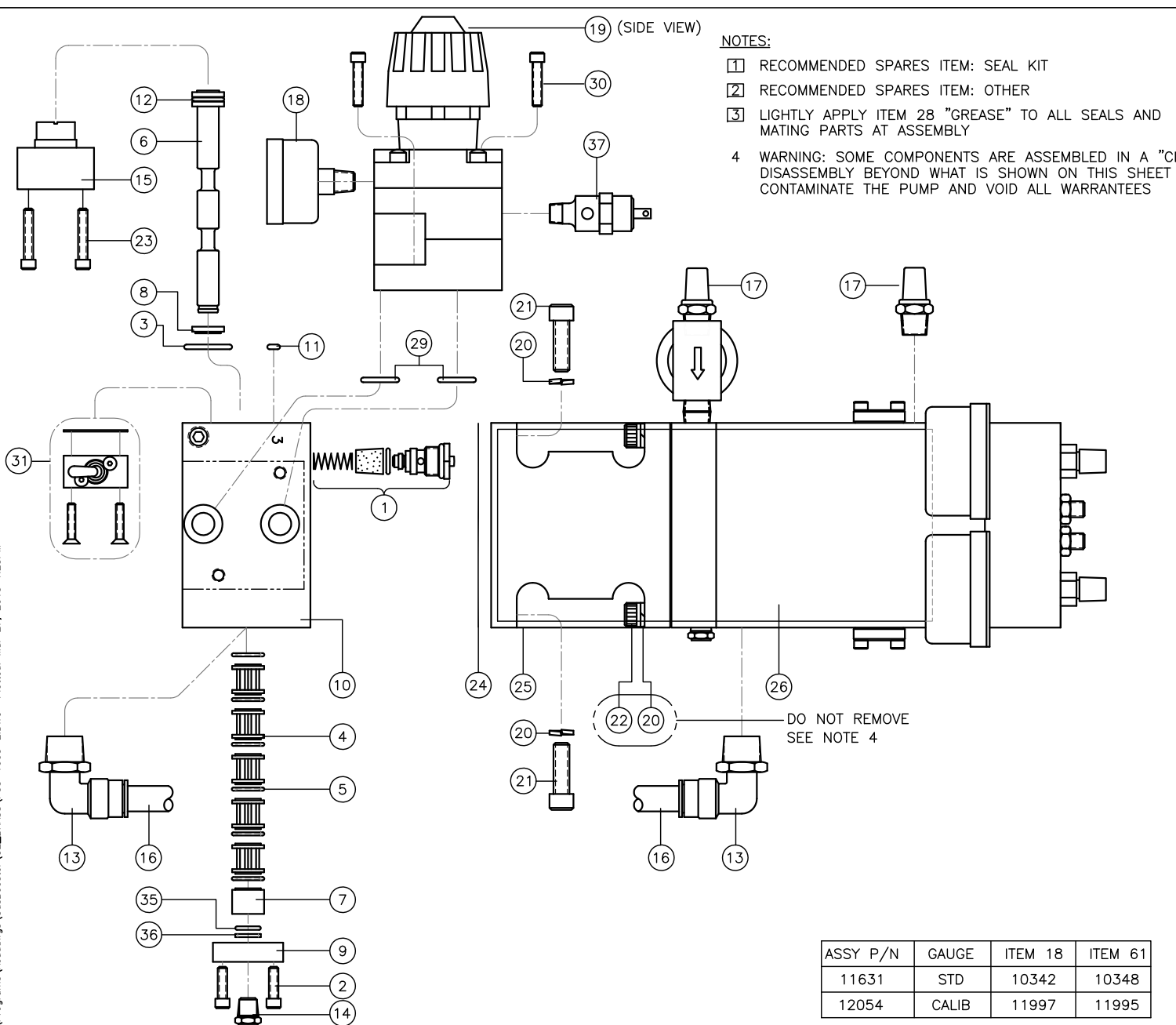
ITEM	QTY	PART NUMBER	DESCRIPTION
85	1	10334 P00-5205	GASKET, AIR BODY
84	2	12022	METAL CAP, ASC-4
83	2	12018 P33-5614	SEAL, .045 x .06 DISK
82	2	12245	ST THD CONN, 4F50X-B
81	2	SO-904V9	O-RING, VITON
80	2	5/16-24	HEX JAM NUT, SS
79	2	5/16-24 x 1.00	SET SCR, SS
78	13	10-32 x 1.50	SCREW, SOC HD CAP, SS
77	2	SO-116V7	O-RING, VITON
76	1	11736 M01-1002	SPRING, MW (GREY)
75	1	10529 P33-5608	LO PISTON
74	1	SO-010V7	O-RING, VITON
73	1	10610 P33-5609	RETAINER
72	1	10693	VALVE, 3-W, NO
71	1	11627 P33-5612	MANIFOLD

ITEM	QTY	PART NUMBER	DESCRIPTION
70	2	11592 M04-1018	FILTER, 10m
69	2	12017	SPRING PIN, .09 x .88 SS
68	1	10488 P33-5606	HI PISTON
67	1	10609 P33-5610	RETAINER
66	1	SO-006V7	O-RING, VITON
65	1	10608 P33-5607	RETAINER (.109")
64	1	10451	VALVE, 3-W, NC
63	2	11630 M01-1001	SPRING, BRASS
62	2	SO-019V7	O-RING, VITON
61	2	SEE CHART	GAUGE, 1/4NPT, BRASS, 3K
60			
59	2	11628 P33-5613	PLUG, CV RETAINER
58	8	8-36 NF x .75	SCREW, SOC HD CAP, SS
57	4	SO-008V7	O-RING, VITON
56	2	11632 M04-1002	CHK VALVE (2201D-18-5)

ITEM	QTY	PART NUMBER	DESCRIPTION
55	1	11626 P33-5611	BODY
54	2	SO-011B7	O-RING, BUNA
53	1	12020	CLOSE NIPPLE, BR, 1/4 NPT
52	1	11629 M04-1019	AIR FILTER
51	1	12647 P33-5403	RATIO PLATE
50	1	11634 M03-1008	VARISEAL (SLANT COIL)
49	1	11637 M03-1031	ROD BEARING
48	1	10886 M03-1008	VARISEAL (CANTILEVER)
47	1	12648 P33-5503	PISTON ROD
46	1	SO-902B7	O-RING
45	1	11167 P09-5201	AIR PISTON, -2 SAE
44	1	10377	GLYDE RING
43	1	SO-233B7	O-RING
42	2	12605 M03-1009	STEP SEAL, .062 ID
41	1	10017 V04-1005	2-WAY AIR VLV ASSY

		INTERFACE DEVICES, INC. 230 DEPOT ROAD MILFORD, CT 06460	
SCALE: 1/2	TITLE: O2 BOOSTER, BILL OF MATERIALS		
DWN BY: WNI			
DATE: 2/1/13	REF: 2013 Version		
SHT: 2 OF: 2	DWG NO: P33-1004	REV: B	

Z:\Programs\Acaddings\CasBooster\02_BRASS\P33-1003-E.DWG Plotted: Mar 27, 2013 1:25PM



- NOTES:**
- 1 RECOMMENDED SPARES ITEM: SEAL KIT
 - 2 RECOMMENDED SPARES ITEM: OTHER
 - 3 LIGHTLY APPLY ITEM 28 "GREASE" TO ALL SEALS AND MATING PARTS AT ASSEMBLY
 - 4 WARNING: SOME COMPONENTS ARE ASSEMBLED IN A "CLEAN" ROOM. DISASSEMBLY BEYOND WHAT IS SHOWN ON THIS SHEET WILL CONTAMINATE THE PUMP AND VOID ALL WARRANTIES

REV	DESCRIPTION	BY	DATE
A	28 WAS "WATERPROOF GREASE"; PICTURE CHANGES; ADDED ITEM 93	WNI	10/11/05
B	ITEM 76 QTY WAS 2; ADDED ITEM 94	WNI	11/21/06
C	DELETED ITEM 91 (11633); ITEM 90 MATL WAS VITON, NOW PTFE	WNI	12/31/09
D	DELETED 32 & 34 (INCLUDED WITH ITEM 31)	WNI	4/13/11
E	ADD CHART, ITM 26; DEL 42 & 77	WNI	1/12/12

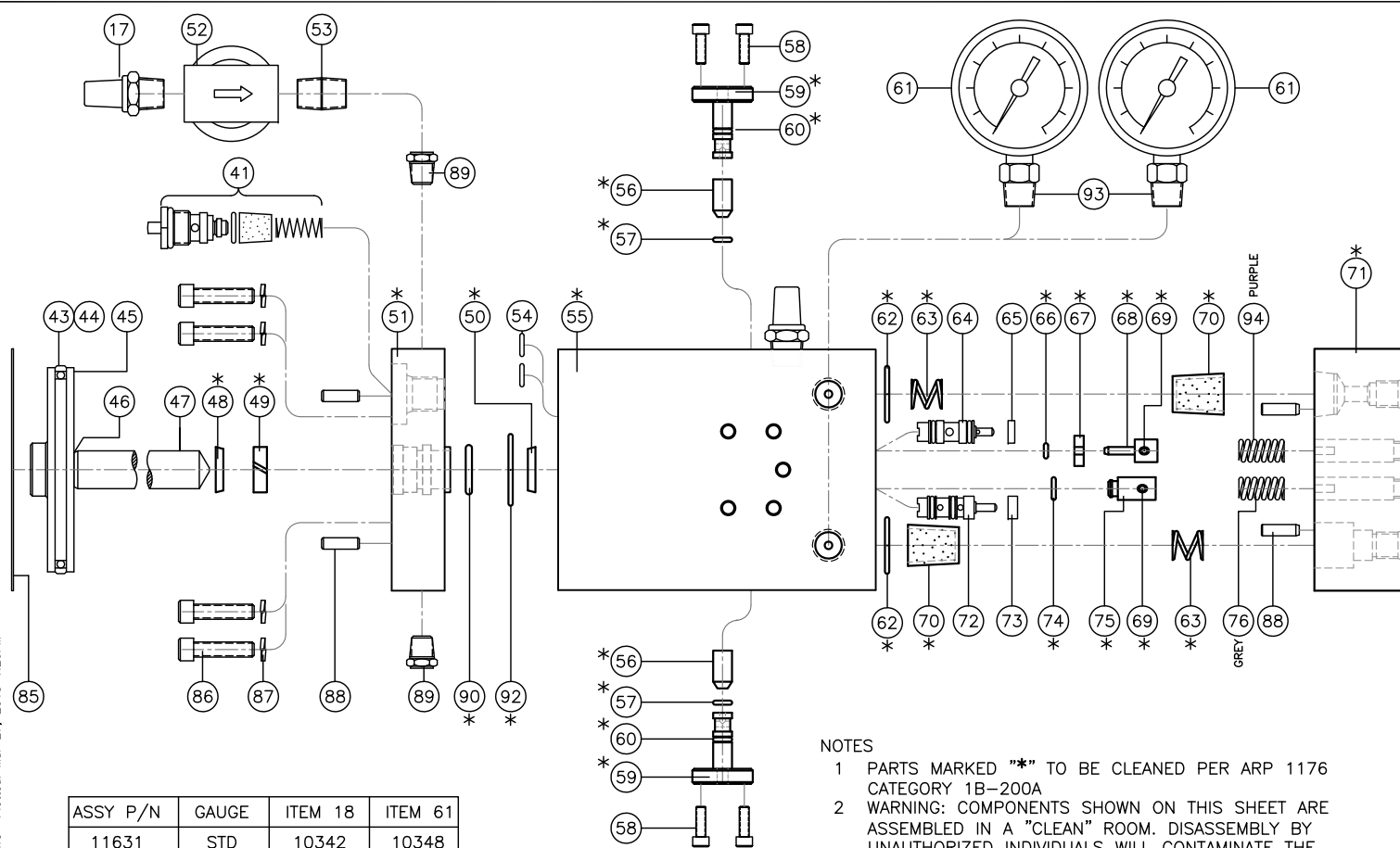
40			
39			
38			
37	1	11236 M04-1006	RELIEF VALVE, 1/8 NPT
36	1	11753	TEFLON BU RING, -012
35	1	S0-012P7	O-RING
34			
33			
32			
31	1	10743 V04-1001	VALVE ASSY, 3-W, TOGGLE
30	2	1/4-20 x .88	SCREW, SOC HD CAP, SS
29	2	S0-016B7	O-RING
28	A/R	MCG111	CHRISTO-LUBE GREASE
27			
26	1	11561 P33-5001	WARNING LABEL
25	1	10111 P12-5202	BODY, AIR CYLINDER
24	1	10334 P00-5205	GASKET, AIR BODY
23	2	10-24 x 1.00 SS	SCREW, SOC HD CAP, SS
22	4	5/16-18 x 2.00SS	SCREW, SOC HD CAP, SS
21	4	5/16-18 x 1.00	SCREW, SOC HD CAP, SS
20	8	12271	L'WASHER, 5/16 HI C SS
19	1	10015 P12-1202	AIR REG ASSY
18	1	SEE CHART	AIR GAUGE (0-160 PSI)
17	3	10429	MUFFLER, 1/4 NPT
16	5"	12019	TUBING, NYLON #.50 OD, GRN
15	1	10298 P00-5207	PILOT CAP
14	1	10264	BREATHER, 1/8 NPT
13	2	12016	MALE ELBOW, 6520-08-08
12	1	S0-111B7	O-RING
11	1	S0-006B7	O-RING
10	1	10004 P12-5201	AIR CAP HOUSING
9	1	10299 P00-5208	SPOOL CAP
8	1	10271 P00-5212	BUSHING, SHORT
7	1	10269 P00-5210	BUSHING, LONG
6	1	10942 P33-5201	AIR SPOOL
5	6	10629	TEE SEAL
4	5	10273 P00-5209	CAGE
3	1	S0-019B7	O-RING
2	2	10-24 x .62 SS	SCREW, SOC HD CAP, SS
1	1	10017 V04-1005	2-WAY AIR VLV ASSY

DO NOT REMOVE
SEE NOTE 4

ASSY P/N	GAUGE	ITEM 18	ITEM 61
11631	STD	10342	10348
12054	CALIB	11997	11995

		INTERFACE DEVICES, INC. 230 DEPOT ROAD MILFORD, CT 06460	
SCALE: 1/2	TITLE: O2 BOOSTER, BILL OF MATERIALS		
DWN BY: WNI			
DATE: 8/15/05	REF: 2005 Version		
SHT: 1 OF: 2	DWG NO: P33-1003	REV: E	

2005 VERSION



REV	DESCRIPTION	BY	DATE
A	28 WAS "WATERPROOF GREASE"; PICTURE CHANGES; ADDED ITEM 93	WNI	10/11/05
B	ITEM 76 QTY WAS 2; ADDED ITEM 94	WNI	11/21/06
C	DELETED ITEM 91 (11633); ITEM 90 MATL WAS VITON, NOW PTFE	WNI	12/31/09
D	DELETED 32 & 34 (INCLUDED WITH ITEM 31)	WNI	4/13/11
E	ADD CHART, ITM 26; DEL 42 & 77	WNI	1/12/12

ASSY P/N	GAUGE	ITEM 18	ITEM 61
11631	STD	10342	10348
12054	CALIB	11997	11995

NOTES

- 1 PARTS MARKED "*" TO BE CLEANED PER ARP 1176 CATEGORY 1B-200A
- 2 WARNING: COMPONENTS SHOWN ON THIS SHEET ARE ASSEMBLED IN A "CLEAN" ROOM. DISASSEMBLY BY UNAUTHORIZED INDIVIDUALS WILL CONTAMINATE THE PUMP AND VOID ALL WARRANTIES

ITEM	QTY	PART NUMBER	DESCRIPTION
94	1	11737 M01-1002	SPRING, MW (PURPLE)
93	A/R	MIL-T-27730A	TEFLON TAPE
92	1	SO-023V7	O-RING, VITON
90	1	SO-114PTFE	O-RING, TEFLON®
89	2	10264	BREATHER, 1/8 NPT
88	4	11772	DOWEL PIN, Ø.18 X .62, SS
87	4	12270	L'WASHER, 1/4 HI COL, SS
86	4	1/4-28 x 1.00	SHCS, SS

ITEM	QTY	PART NUMBER	DESCRIPTION
85	1	10334 P00-5205	GASKET, AIR BODY
84	2	12022	METAL CAP, ASC-4
83	2	12018 P33-5614	SEAL, Ø.045 x .06 DISK
82	2	11975	ST THD CONN, 4F50X-SS
81	2	SO-904V9	O-RING, VITON
80	2	5/16-24	HEX JAM NUT, SS
79	2	5/16-24 x 1.00	SET SCR, SS
78	13	10-32 x 1.50	SCREW, SOC HD CAP, SS
77			
76	1	11736 M01-1002	SPRING, MW (GREY)
75	1	10529 P33-5608	LO PISTON
74	1	SO-010V7	O-RING, VITON
73	1	10610 P33-5609	RETAINER
72	1	10693	VALVE, 3-W, NO
71	1	11627 P33-5612	MANIFOLD

ITEM	QTY	PART NUMBER	DESCRIPTION
70	2	11592 M04-1018	FILTER, 10m
69	2	12017	SPRING PIN, Ø.09 x .88 SS
68	1	10488 P33-5606	HI PISTON
67	1	10609 P33-5610	RETAINER
66	1	SO-006V7	O-RING, VITON
65	1	10608 P33-5607	RETAINER (.109")
64	1	10451	VALVE, 3-W, NC
63	2	11630 M01-1001	SPRING, BRASS
62	2	SO-019V7	O-RING, VITON
61	2	SEE CHART	GAUGE, 1/4NPT, BRASS, 3K
60	2	SO-008V7	O-RING, VITON
59	2	11628 P33-5613	PLUG, CV RETAINER
58	8	8-36 NF x .75	SCREW, SOC HD CAP, SS
57	4	SO-008V7	O-RING, VITON
56	2	11632 M04-1002	CHK VALVE (2201D-18-5)

ITEM	QTY	PART NUMBER	DESCRIPTION
55	1	11626 P33-5611	BODY
54	2	SO-011B7	O-RING, BUNA
53	1	12020	CLOSE NIPPLE, BR, 1/4 NPT
52	1	11629 M04-1019	AIR FILTER
51	1	11624 P33-5402	RATIO PLATE
50	1	11634 M03-1008	VARISEAL (SLANT COIL)
49	1	11637 M03-1031	ROD BEARING
48	1	10886 M03-1008	VARISEAL (CANTILEVER)
47	1	11625 P33-5502	PISTON ROD
46	1	SO-902B7	O-RING
45	1	11167 P09-5201	AIR PISTON, -2 SAE
44	1	10377	GLYDE RING
43	1	SO-233B7	O-RING
42			
41	1	11635 V04-1010	2-WAY AIR VLV ASSY

INTERFACE DEVICES, INC.
230 DEPOT ROAD
MILFORD, CT 06460

SCALE: 1/2	TITLE: O2 BOOSTER, BILL OF MATERIALS
DWN BY: WNI	
DATE: 8/15/05	REF: 2005 Version
SHT: 2 OF: 2	DWG NO: P33-1003
	REV: E