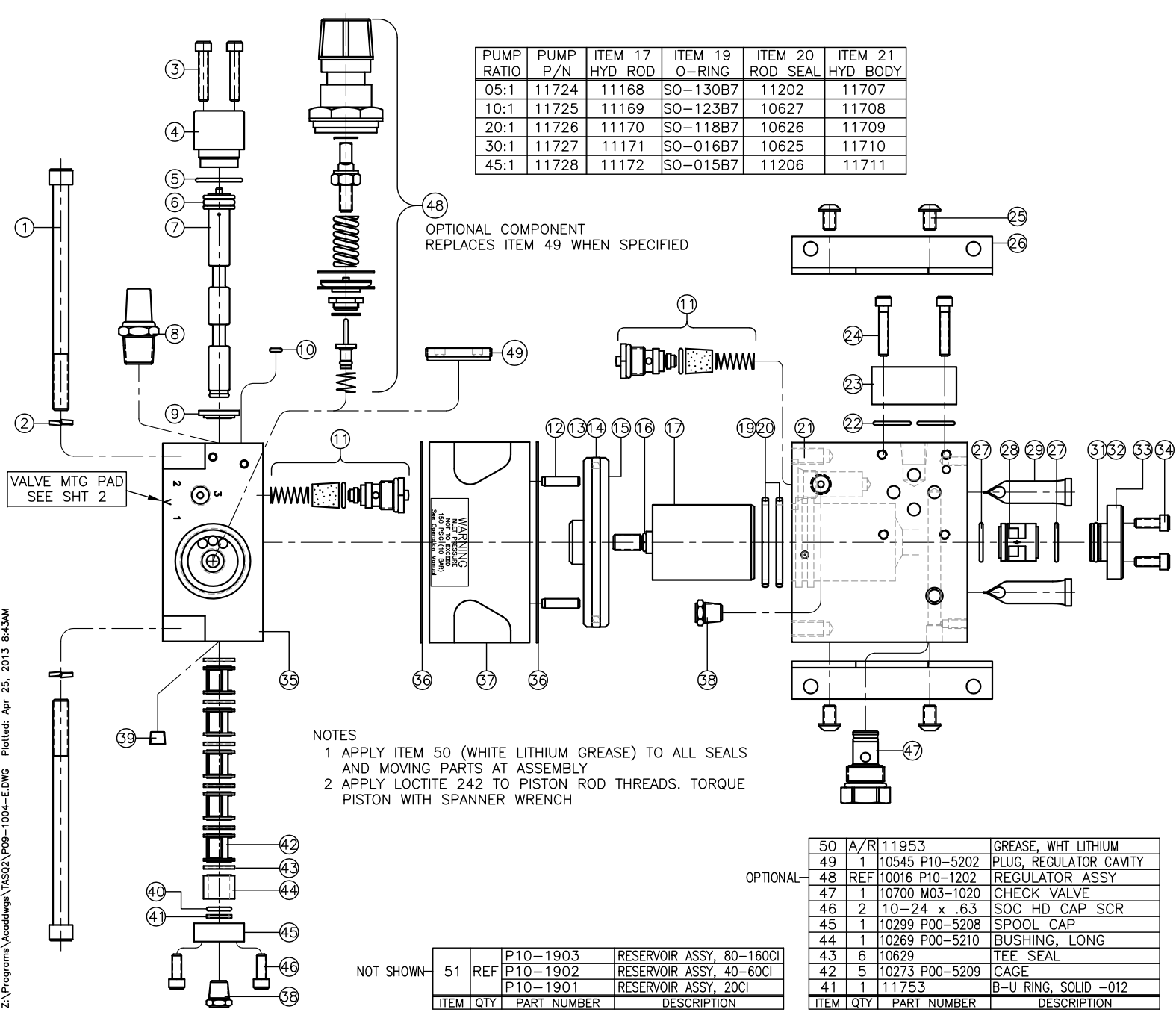


Z:\Programs\Acaddwgs\TASQ2\PO9-1004-EDWG Plotted: Apr 25, 2013 8:43AM



PUMP RATIO	PUMP P/N	ITEM 17 HYD ROD	ITEM 19 O-RING	ITEM 20 ROD SEAL	ITEM 21 HYD BODY
05:1	11724	11168	SO-130B7	11202	11707
10:1	11725	11169	SO-123B7	10627	11708
20:1	11726	11170	SO-118B7	10626	11709
30:1	11727	11171	SO-016B7	10625	11710
45:1	11728	11172	SO-015B7	11206	11711

OPTIONAL COMPONENT REPLACES ITEM 49 WHEN SPECIFIED

WARNING
DO NOT EXCEED
MAXIMUM OPERATING PRESSURE
SPECIFIED ON LABEL

- NOTES
- 1 APPLY ITEM 50 (WHITE LITHIUM GREASE) TO ALL SEALS AND MOVING PARTS AT ASSEMBLY
 - 2 APPLY LOCTITE 242 TO PISTON ROD THREADS. TORQUE PISTON WITH SPANNER WRENCH

NOT SHOWN

ITEM	QTY	PART NUMBER	DESCRIPTION
51	REF	P10-1903	RESERVOIR ASSY, 80-160CI
		P10-1902	RESERVOIR ASSY, 40-60CI
		P10-1901	RESERVOIR ASSY, 20CI

OPTIONAL-

ITEM	QTY	PART NUMBER	DESCRIPTION
50	A/R	11953	GREASE, WHT LITHIUM
49	1	10545 P10-5202	PLUG, REGULATOR CAVITY
48	REF	10016 P10-1202	REGULATOR ASSY
47	1	10700 M03-1020	CHECK VALVE
46	2	10-24 x .63	SOC HD CAP SCR
45	1	10299 P00-5208	SPOOL CAP
44	1	10269 P00-5210	BUSHING, LONG
43	6	10629	TEE SEAL
42	5	10273 P00-5209	CAGE
41	1	11753	B-U RING, SOLID -012

REV	DESCRIPTION	BY	DATE
A	ADDED ID PN ITEMS 2,12,32,39,41; DEL ITEM 30; ITEM 27 NOW (REF)	WNI	2/26/07
B	DEL ITEM 18; ITEM 19 & 20 NOW QTY 2	WNI	7/18/07
C	PIC CHG ITEM 68; DEL 61,63,64,66,67,69	WNI	4/14/11
D	PIC CHG ITM 27; 34 WAS 0.50; 10627 WAS 11203; 10626 WAS 11204; ITM 1 WAS 5/16-18 X 4.00; ITM 2 QTY WAS 8	WNI	12/27/11
E	10625 WAS 11205	WNI	9/26/12

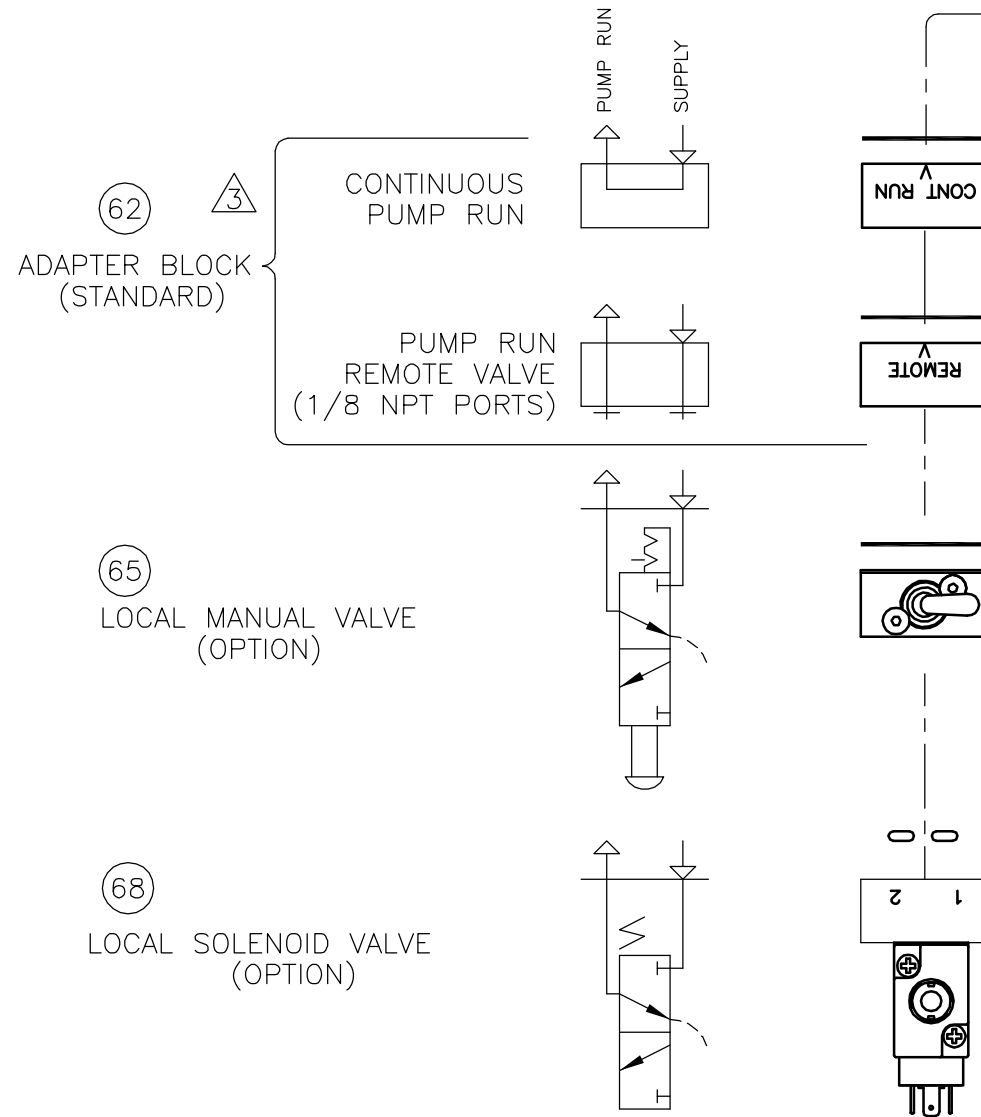
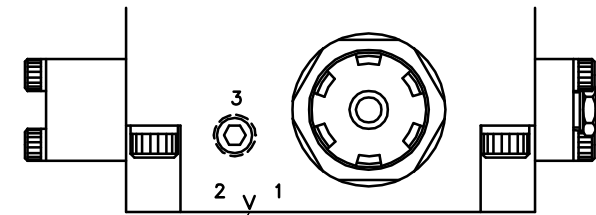
40	1	SO-012P9	O-RING
39	2	11769	PIPE PLUG, 1/8 NPT
38	2	10264	BREATHER, 1/8 NPT
37	1	10112 P10-5203	AIR BODY
36	2	10334 P00-5205	GASKET, AIR BODY
35	1	10006 P10-5201	AIR CAP
34	4	10-24 x .62	SOC HD CAP SCR
33	1	11137 P00-5607	RETAINER, CHECK VALVE
32	1	11757	B-UP RING, SPLIT -016
31	1	SO-016B7	O-RING
30			
29	2	11731 M03-1035	FILTER, SCREEN
28	1	11138	CHECK VALVE, -08
27	REF	16mm x 1.5mm	O-RING
26	2	10262 P00-5801	MOUNTING BRACKET
25	4	1/4-20 x .38	BUT HD CAP SCR
24	REF	10-24 x 1.00	SOC HD CAP SCR
23	REF	11200 M50-0003	DO3 XOVER PLATE
22	REF	SO-017B7	O-RING
21	1	SEE CHART	HYDRAULIC BODY
20	2	SEE CHART	ROD SEAL
19	2	SEE CHART	O-RING
18			
17	1	SEE CHART	HYDRAULIC ROD
16	1	SO-902B7	O-RING
15	1	11167 P09-5201	AIR PISTON
14	1	10377	GLYD RING
13	1	SO-233B7	O-RING
12	2	11772	DOWEL PIN, #3/16 x 5/8
11	2	10017 V04-1005	2-WAY AIR VLV ASSY
10	1	SO-006B7	O-RING
9	1	10271 P00-5212	SPACER, SHORT
8	1	10431	MUFFLER, 3/8 NPT
7	1	10659 P00-5211	SPOOL, AIR
6	1	SO-111B7	O-RING
5	1	SO-019B7	O-RING
4	1	10298 P00-5207	PILOT CAP
3	2	10-24 x 1.00	SOC HD CAP SCR
2	4	10393	HI COLLAR L'NUT, 5/16
1	4	5/16-18 x 3.75	SOC HD CAP SCR

ITEM	QTY	PART NUMBER	DESCRIPTION
INTERFACE DEVICES, INC. 230 DEPOT ROAD MILFORD, CT 06460			
SCALE: 1/2		TITLE: PUMP ASSEMBLY, TASQ II SERIES	
DWN BY: WNI		DATE: 10/10/06 REF: 5:1 THRU 45:1 RATIO	
SHT: 1 OF: 2		DWG NO: P09-1004	REV: E

REV	DESCRIPTION	BY	DATE
E	10625 WAS 11205	WNI	9/26/12

NOTES

- 1 PORT 3 IS COMMON TO PORT 2.
CONNECT PORT 3 TO REMOTE AIR PILOT OPERATED
HYDRAULIC RELEASE VALVE
- 2 MOUNTING SCREWS AND GASKET/O-RINGS ARE
FURNISHED FOR EACH OPTION
- 3 ROTATE ADAPTER BLOCK TO MATCH "V" STAMPED ON AIR CAP
FOR THE DESIRED FUNCTION

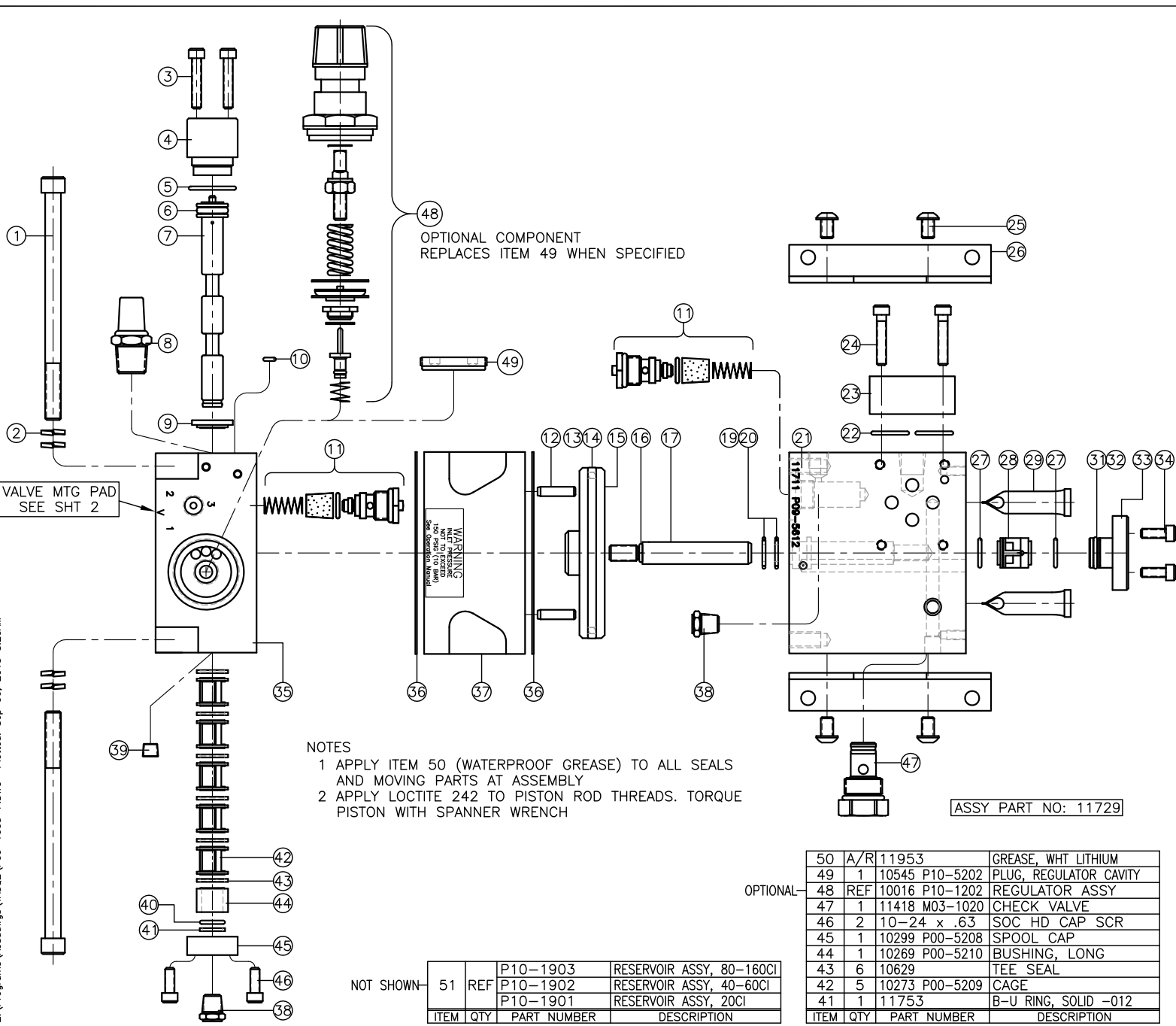


VOLTAGE	ITEM 57 P/N
24 VDC	11837 V04-1003
120 VAC	11838 V04-1003
240 VAC	11919 V04-1003

70			
69			
68	REF	SEE CHART	SOL AIR VALVE ASSY
67			
66			
65	REF	10449 V04-1002	MAN TOGGLE SWITCH ASSY
64			
63			
62	REF	11235 P00-1206	BLOCK ASSY, ADAPTER
61			
ITEM	QTY	PART NUMBER	DESCRIPTION

 INTERFACE DEVICES, INC. 230 DEPOT ROAD MILFORD, CT 06460			
SCALE: 1/2	TITLE: PUMP ASSEMBLY. TASQ SERIES, (INTEGRATED AIR REGULATOR)		
DWN BY: WNI	REF: 5:1 THRU 45:1 RATIO		
DATE: 10/10/06	DWG NO: P09-1004		REV: E

Z:\Programs\Acaddwggs\TASQ2\PO9-1005-F.DWG Plotted: Sep 06, 2013 8:20AM



NOTES
 1 APPLY ITEM 50 (WATERPROOF GREASE) TO ALL SEALS AND MOVING PARTS AT ASSEMBLY
 2 APPLY LOCTITE 242 TO PISTON ROD THREADS. TORQUE PISTON WITH SPANNER WRENCH

NOT SHOWN-

ITEM	QTY	PART NUMBER	DESCRIPTION
51	REF	P10-1903	RESERVOIR ASSY, 80-160CI
		P10-1902	RESERVOIR ASSY, 40-60CI
		P10-1901	RESERVOIR ASSY, 20CI

OPTIONAL-

ITEM	QTY	PART NUMBER	DESCRIPTION
50	A/R	11953	GREASE, WHT LITHIUM
49	1	10545 P10-5202	PLUG, REGULATOR CAVITY
48	REF	10016 P10-1202	REGULATOR ASSY
47	1	11418 M03-1020	CHECK VALVE
46	2	10-24 x .63	SOC HD CAP SCR
45	1	10299 P00-5208	SPOOL CAP
44	1	10269 P00-5210	BUSHING, LONG
43	6	10629	TEE SEAL
42	5	10273 P00-5209	CAGE
41	1	11753	B-U RING, SOLID -012

ASSY PART NO: 11729

REV	DESCRIPTION	BY	DATE
A	REDESIGNED FOR "P" STYLE HYDRAULIC BODY	WNI	9/27/06
B	ADDED ID PN ITEMS 2,12,32,39,41; DEL ITEM 30; ITEM 27 NOW (REF)	WNI	2/26/07
C	DEL ITEM 18; ITEM 19 & 20 NOW QTY 2	WNI	7/18/07
D	ITEM 47 WAS 10700	WNI	8/31/09
E	PIC CHG ITEM 68; DEL 61,63,64,66,67,69	WNI	4/14/11
F	PIC CHG 27; 31 WAS SO-015; 34 WAS 0.50	WNI	12/27/11

40	1	SO-012P9	O-RING
39	2	11769	PIPE PLUG, 1/8 NPT
38	2	10264	BREATHER, 1/8 NPT
37	1	10112 P10-5203	AIR BODY
36	2	10334 P00-5205	GASKET, AIR BODY
35	1	10006 P10-5201	AIR CAP
34	4	10-24 x .62	SOC HD CAP SCR
33	1	11713 P00-5608	RETAINER, CHECK VALVE
32	1	12723	B-UP RING, SPLIT -013
31	1	SO-013B7	O-RING
30			
29	2	10328 M03-1001	FILTER
28	1	11201	CHECK VALVE, -6
27	REF	12mm x 1.5mm	O-RING
26	2	10262 P00-5801	MOUNTING BRACKET
25	4	1/4-20 x .38	BUT HD CAP SCR
24	REF	10-24 x 1.00	SOC HD CAP SCR
23	REF	11200 M50-0003	DO3 XOVER PLATE
22	REF	SO-017B7	O-RING
21	1	11711 P09-5613	HYDRAULIC BODY
20	2	11207	ROD SEAL
19	2	SO-014B7	O-RING
18			
17	1	11173 P09-5506	HYDRAULIC ROD
16	1	SO-902B7	O-RING
15	1	11167 P09-5201	AIR PISTON
14	1	10377	GLYD RING
13	1	SO-233B7	O-RING
12	2	11772	DOWEL PIN, ø3/16 x 5/8
11	2	10017 V04-1005	2-WAY AIR VLV ASSY
10	1	SO-006B7	O-RING
9	1	10271 P00-5212	SPACER, SHORT
8	1	10431	MUFFLER, 3/8 NPT
7	1	10659 P00-5211	SPOOL, AIR
6	1	SO-111B7	O-RING
5	1	SO-019B7	O-RING
4	1	10298 P00-5207	PILOT CAP
3	2	10-24 x 1.00	SOC HD CAP SCR
2	8	10393	HI COLLAR L'NUT, 5/16
1	4	5/16-18 x 4.00	SOC HD CAP SCR

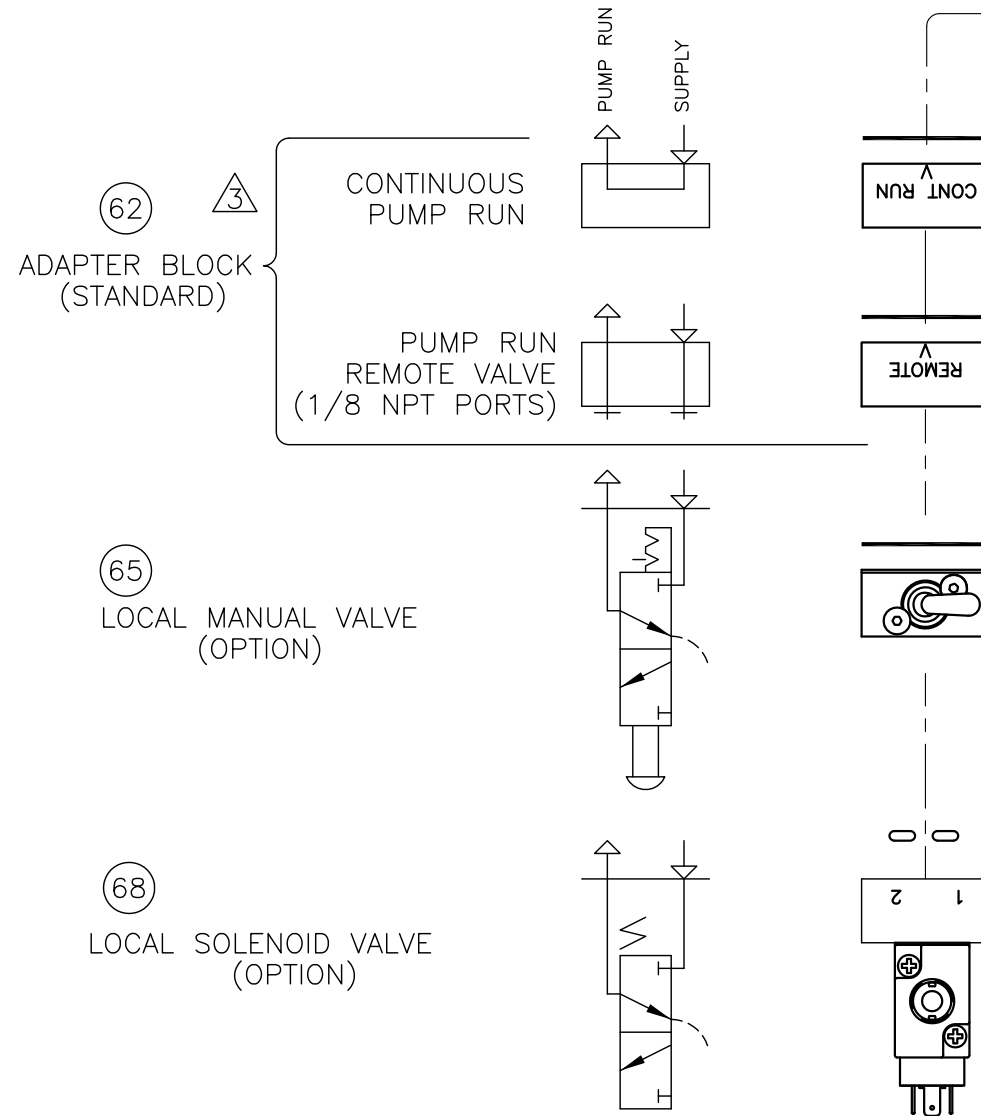
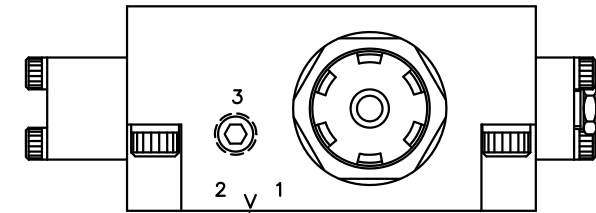
ITEM	QTY	PART NUMBER	DESCRIPTION
			INTERFACE DEVICES, INC. 230 DEPOT ROAD MILFORD, CT 06460

SCALE: 1/2 TITLE: PUMP ASSEMBLY, TASQ II SERIES
 DWN BY: WNI REF: 60:1 RATIO
 DATE: 10/10/06
 SH1 OF: 2 DWG NO: P09-1005 REV: F

REV	DESCRIPTION	BY	DATE
E	PIC CHG ITEM 68; DEL 61,63,64,66,67,69	WNI	4/14/11
F	PIC CHG 27; 31 WAS SO-015; 34 WAS 0.50	WNI	12/27/11

NOTES

- 1 PORT 3 IS COMMON TO PORT 2.
CONNECT PORT 3 TO REMOTE AIR PILOT OPERATED HYDRAULIC RELEASE VALVE
- 2 MOUNTING SCREWS AND GASKET/O-RINGS ARE FURNISHED FOR EACH OPTION
- 3 ROTATE ADAPTER BLOCK TO MATCH "V" STAMPED ON AIR CAP FOR THE DESIRED FUNCTION

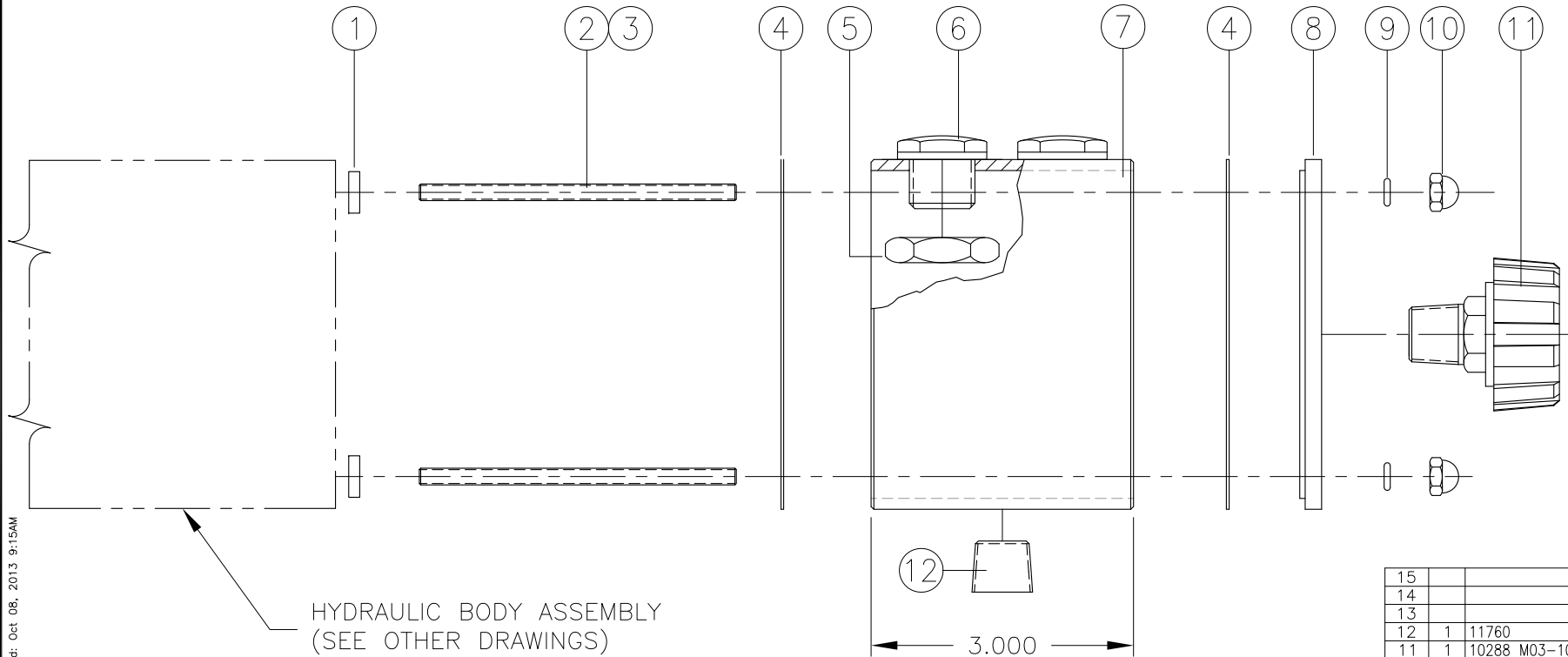


VOLTAGE	ITEM 57 P/N
24 VDC	11837 V04-1003
120 VAC	11838 V04-1003
240 VAC	11919 V04-1003

70			
69			
68	REF	SEE CHART	SOL AIR VALVE ASSY
67			
66			
65	REF	10449 V04-1002	MAN TOGGLE SWITCH ASSY
64			
63			
62	REF	11235 P00-1206	BLOCK ASSY, ADAPTER
61			

ITEM	QTY	PART NUMBER	DESCRIPTION
 INTERFACE DEVICES, INC. 230 DEPOT ROAD MILFORD, CT 06460			
SCALE: 1/2		TITLE: PUMP ASSEMBLY. TASQ II SERIES, (INTEGRATED AIR REGULATOR)	
DWN BY: WNI		REF: 60:1 RATIO	
DATE: 10/10/06		REF: 60:1 RATIO	
SHT: 2	OF: 2	DWG NO: P09-1005	REV: F

REV	DESCRIPTION	BY	DATE
A	ADDED ITM 12	WNI	5/31/12
B	MOVED 10855 TO P10-1903	WNI	10/8/13

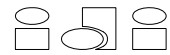


HYDRAULIC BODY ASSEMBLY
(SEE OTHER DRAWINGS)

12

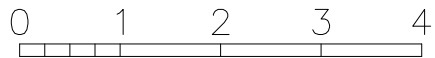
3.000

15			
14			
13			
12	1	11760	FTG, PLUG, 3/8 NPT
11	1	10288 M03-1036	BREATHER/FILLER CAP
10	4	10437	ACORN NUT, 10-24 NC
9	4	S0-008B7	O-RING
8	1	10304 P10-5903	COVER, RESERVOIR
7	1	10590	RESERVOIR
6	2	10363	SIGHT GAUGE, -08
5	2	11316 P10-5913	HEX JAM NUT, 3/4-16 NF
4	2	10338 P10-5905	GASKET, RESERVOIR
3	A/R	#242	LOCTITE
2	4	10675	STUD, 10-24 x 3.62
1	4	11304 P10-5912	ROUND JAM NUT, 10-24
ITEM	QTY	PART NUMBER	DESCRIPTION



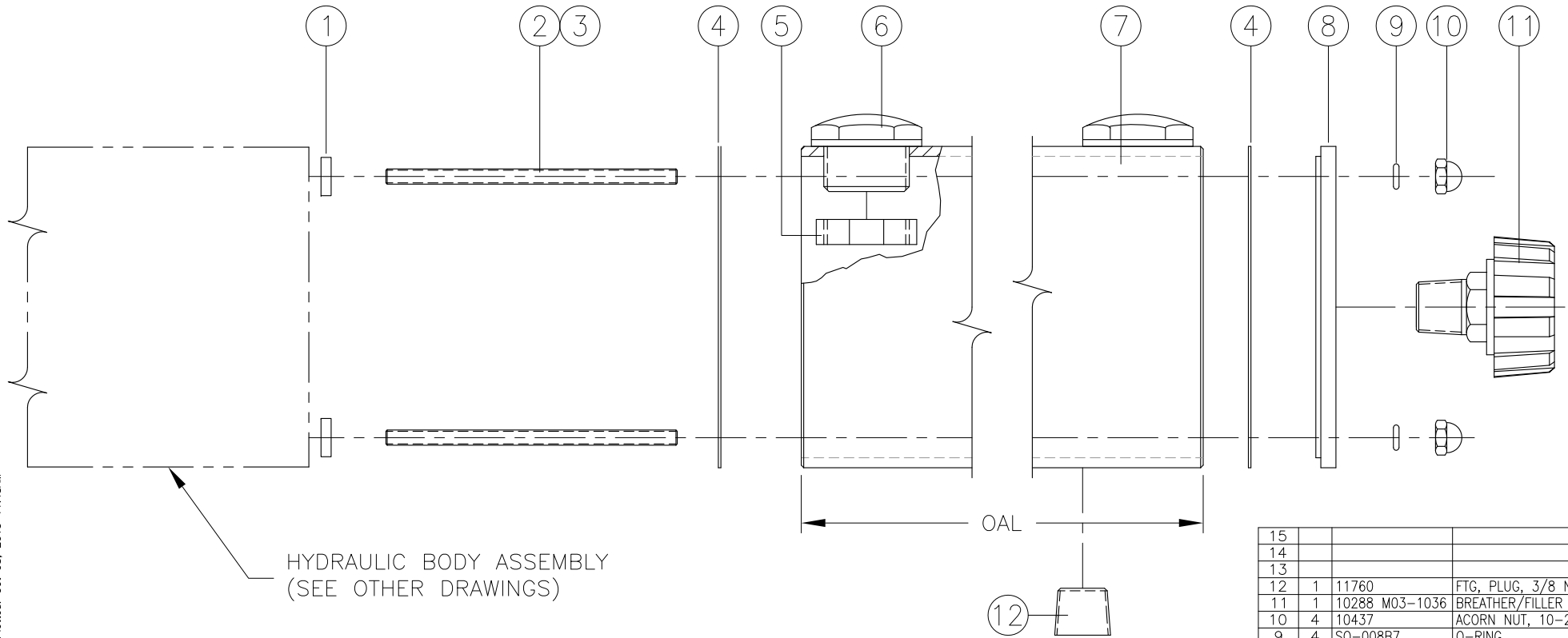
INTERFACE DEVICES, INC.
230 DEPOT ROAD
MILFORD, CT 06460

SCALE: N/A	TITLE: RESERVOIR ASSEMBLY, SELF CONTAINED, 40 CUBIC INCH
DWN BY: WNI	REF:
DATE: 12/10/02	REF:
SHT: 1 OF: 1	DWG NO: P10-1902
	REV: B



INCHES ON ORIGINAL DWG

REV	DESCRIPTION	BY	DATE
A	ADDED ITM 12	WNI	5/31/12
B	ADDED 10855 (60 CI)	WNI	10/8/13



HYDRAULIC BODY ASSEMBLY
(SEE OTHER DRAWINGS)

15			
14			
13			
12	1	11760	FTG, PLUG, 3/8 NPT
11	1	10288 M03-1036	BREATHER/FILLER CAP
10	4	10437	ACORN NUT, 10-24 NC
9	4	S0-008B7	O-RING
8	1	10304 P10-5903	COVER, RESERVOIR
7	1	SEE CHART	RESERVOIR
6	2	10364	SIGHT GAUGE, -12
5	2	10443 P10-5904	LOCKNUT, SIGHT GAUGE
4	2	10338 P10-5905	GASKET, RESERVOIR
3	A/R	#242	LOCTITE
2	4	SEE CHART	STUD
1	4	11304 P10-5912	ROUND JAM NUT, 10-24
ITEM	QTY	PART NUMBER	DESCRIPTION

ASSEMBLY PART NO	VOLUME (CU IN)	OAL	RESERVOIR PART NO	STUD PART NUMBER/SIZE (4) REQ'D	
10855	60	4.50	10592	10677	10-24 x 5.12
10856	80	5.75	10593	10944	10-24 x 6.38
10857	100	7.25	10595	10678	10-24 x 7.88
10858	120	8.75	10852	10679	10-24 x 9.38
10859	160	11.50	10596	10680	10-24 x 12.12
12448	215	15.50	12446	12447	10-24 x 16.12



INCHES ON ORIGINAL DWG

		INTERFACE DEVICES, INC. 230 DEPOT ROAD MILFORD, CT 06460
SCALE: N/A	TITLE: RESERVOIR ASSEMBLY, SELF-CONTAINED, 60-215 CUBIC INCH	
DWN BY: WNI	DATE: 11/5/98 REF:	
SHT: 1 OF: 1	DWG NO: P10-1903	REV: B

Z:\Programs\Accaddwgs\IP-SERIES\RES\P10-1903-B.DWG Plotted: Oct 08, 2013 11:48AM