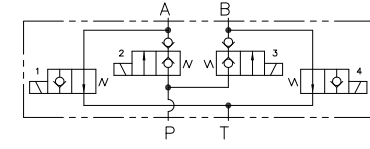
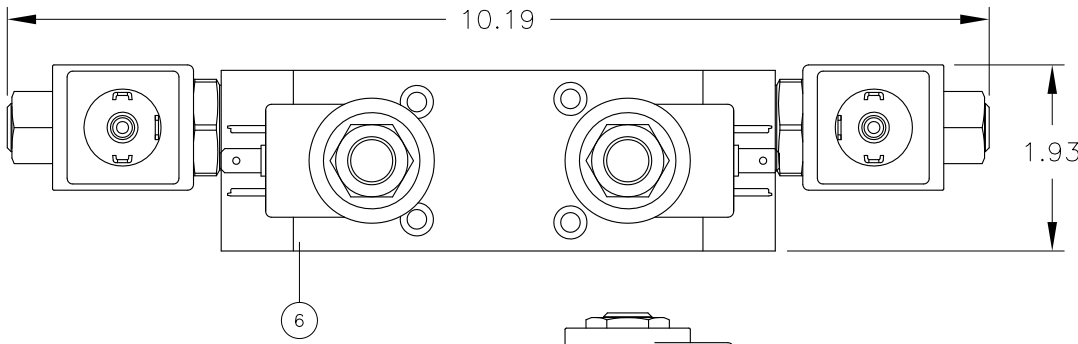
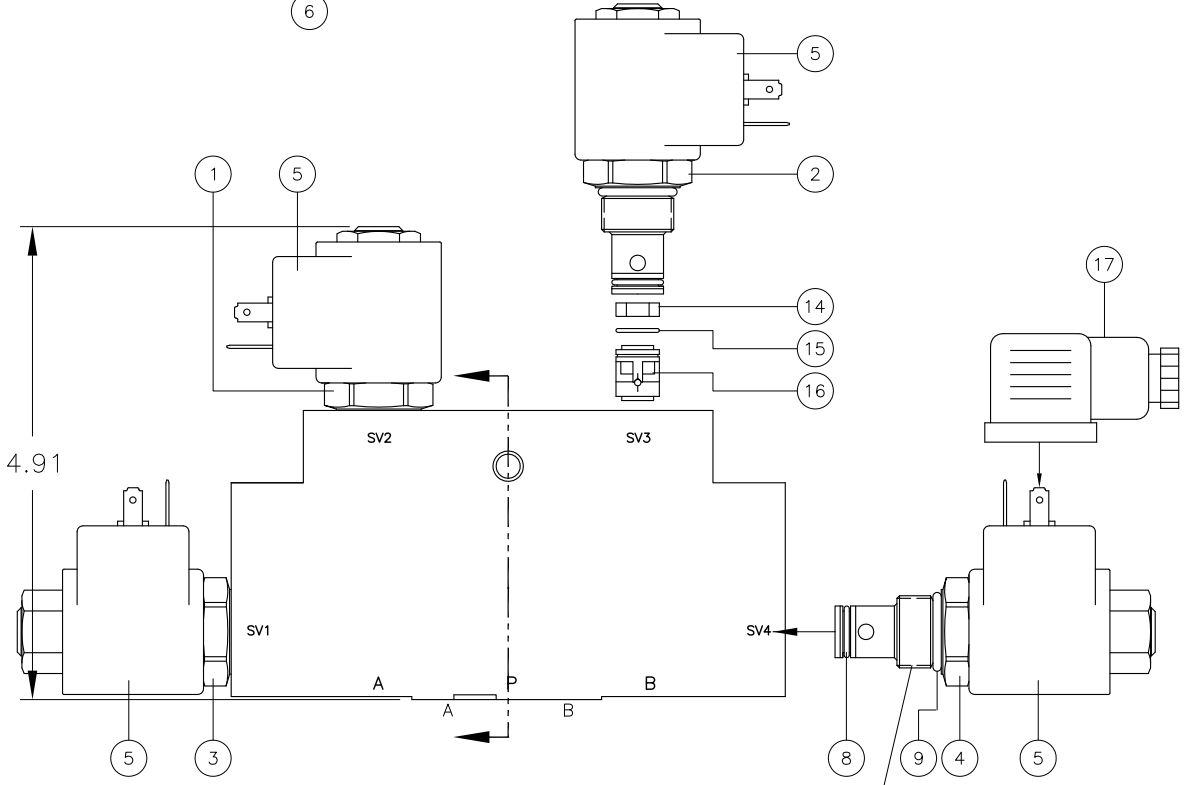


REV	DESCRIPTION	BY	DATE
A	ITEMS 3 & 4 WERE 11398; 11578 WAS VITON; 10.19 WAS 9.54; 5.22 WAS 4.90; SCHEMATIC CORRECTED TO SHOW N.O. VALVES	WNI	5/25/05
B	REVISED SCHEMATIC SYMBOL TO SHOW 4 POSSIBLE POSITIONS	WNI	9/30/08
C	REVISED SCHEMATIC SYMBOL TO ISO; ADDED SHT 2; RENUMBERED SOLS	WNI	9/30/08
D	15 WAS 6.2x1.0; 16 WAS 11609 (-02 CV)	WNI	9/15/11
E	PICT CHANGE SCHEMATIC SYMBOL	WNI	11/2/13

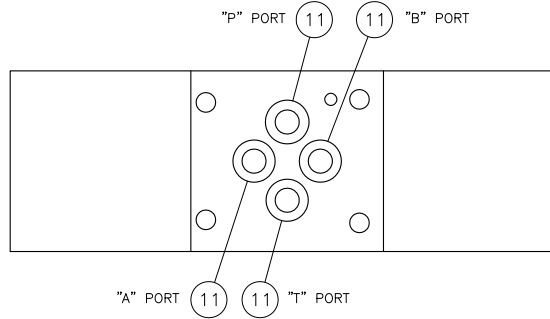


SPECIAL DO-3 VALVE
(2 NC 3-W VALVE FUNCTION WITH P CV'S)

OPERATION:
 A CLAMP: ENERGIZE COILS 1 & 2
 B CLAMP: ENERGIZE COILS 3 & 4
 A&B CLAMP: ENERGIZE COILS 1,2,3 & 4
 A&B UNCLAMP: DENERGIZE COILS 1,2,3 & 4



APPLY LOCTITE #242
TORQUE TO 25 FT LBS



VOLTAGE	SOL P/N	SEAL_MATL	SEAL CODE
12 VDC	12066 M03-1018	EPR	E90
		VITON	M83248
		POLYURETHANE	9250
24 VDC	11403 M03-1018	VITON	M83248
		POLYURETHANE	9250
		EPR	E90
115 VAC	11404 M03-1018	VITON	M83248
		POLYURETHANE	9250
		EPR	E90
230 VAC	11405 M03-1018	VITON	M83248
		POLYURETHANE	9250
		EPR	E90

17	REF	10311 M02-1003	CONNECTOR, DIN 43650
16	2	10697	CHECK VALVE, -04
15	2	8.5x1.5 (MATL)	O-RING
14	2	11577 V03-5009	CHECK VALVE RETAINER
13	1	10958 V03-5003	INSERT
12			
11	4	50-011-(MATL)	O-RING
10			
9	4	50-908-(MATL)	O-RING
8	4	50-012-(MATL)	O-RING
7			
6	1	11576 V03-5008	BODY
5	4	(SEE CHART)	SOLENOID COIL
4	1	11402 M03-1018	2-W POPPET VALVE, NO
3	1	11402 M03-1018	2-W POPPET VALVE, NO
2	1	11398 M03-1018	2-W POPPET VALVE, NC
1	1	11398 M03-1018	2-W POPPET VALVE, NC
ITEM	QTY	PART NUMBER	DESCRIPTION
			INTERFACE DEVICES, INC. 230 DEPOT ROAD MILFORD, CT 06460
SCALE: FULL		TITLE: ASSEMBLY, 6K SOL POPPET 2 3-W VALVE	
DWN BY: WNI		REF: (2) NC 3-W in D03 Body	
DATE: 2/28/05		DWG NO: V03-1005	
SHT: 1 OF 2		REV: E	

Z:\Programs\Acad\dwg\Wolves\003-42MSV\003-1005-EDWG Plotlet: May 14, 2019 2:33PM