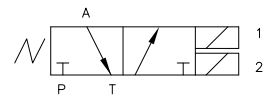
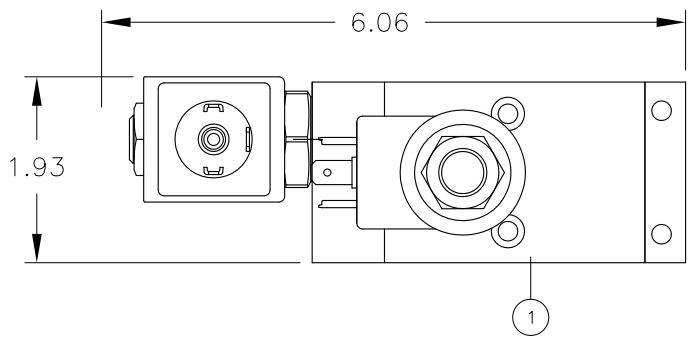
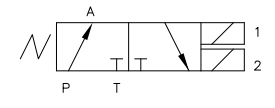
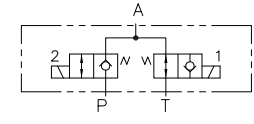


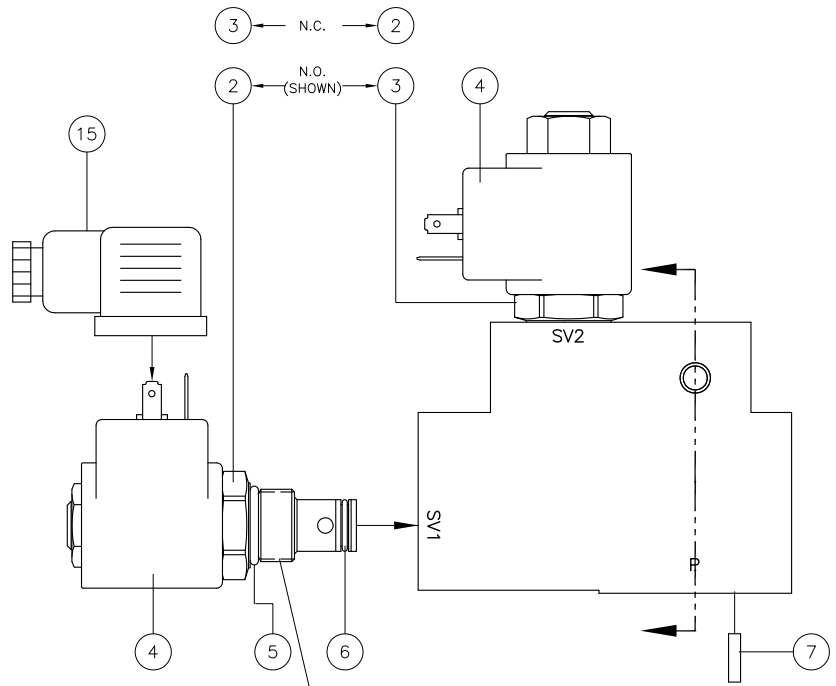
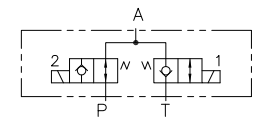
REV	DESCRIPTION	BY	DATE
A	SWAPPED X/Y (NC/NO) NOW CONFORMS TO OTHER IDI VALVES	WNI	10/27/16



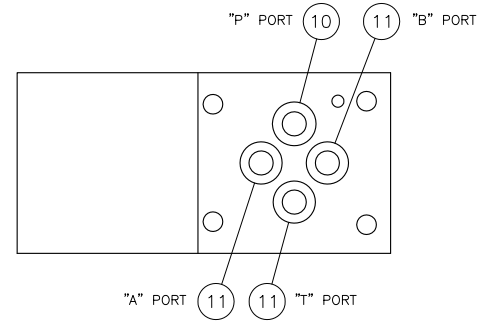
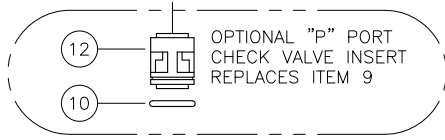
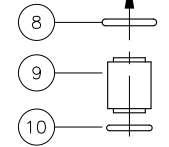
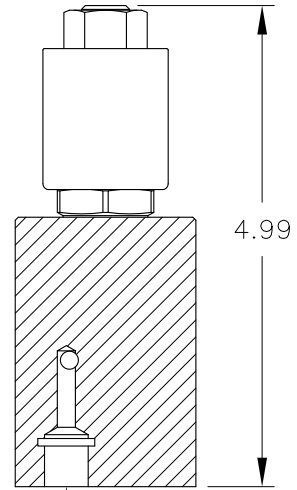
X = NC



Y = NO



APPLY LOCTITE #242  
TORQUE TO 25 FT LBS



- D03-3W2P
- "SPOOL" CONFIGURATION  
X = N.C.  
Y = N.O.
- CONNECTORS  
D=DIN 43650  
0= NONE
- SOLENOID VOLTAGE  
12 VDC  
24 VDC  
115 VAC  
230 VAC
- BOLT KIT  
K= #10-24 X 2.25 SHCS (4)  
0= NONE
- SEALS  
P=POLYURETHANE  
V=VITON  
E=EPR
- P = P PORT CHECK VALVE  
0 = NONE

VOLTAGE	SOL P/N	SEAL MATL	SEAL CODE
24 VDC	11403 M03-1018	EPR	E90
		VITON	M83248
		POLYURETHANE	9250
115 VAC	11404 M03-1018	EPR	E90
		VITON	M83248
		POLYURETHANE	9250
230 VAC	11405 M03-1018	EPR	E90
		VITON	M83248
		POLYURETHANE	9250

15	REF 10311 M02-1003	CONNECTOR, DIN 43650	
14			
13			
12	REF 10697	CHECK VALVE, -04	
11	3 SO-011-(MATL)	O-RING	
10	1 8.5x1.5-(MATL)	O-RING	
9	1 10958 V03-5003	INSERT	
8	1 SO-013-B70	O-RING	
7	1 I2003	PIN, SPRING, ø.125 x 0.38	
6	2 SO-012-(MATL)	O-RING	
5	2 SO-908-(MATL)	O-RING	
4	2 (SEE CHART)	SOLENOID COIL	
3	1 11402 M03-1018	Z-W POPPET VALVE, NO	
2	1 11398 M03-1018	Z-W POPPET VALVE, NC	
1	1 11501 V03-5007	BODY	
ITEM	QTY	PART NUMBER	DESCRIPTION
INTERFACE DEVICES, INC. 230 DEPOT ROAD MILFORD, CT 06460			
SCALE: FULL		TITLE: ASSEMBLY, 5K SOL POPPET 3W2P VALVE	
DWN BY: WNI		REF: D03-3W2P	
DATE: 3/21/11		DWG NO: V03-1009	
SHT: 1 OF 2		REV: A	