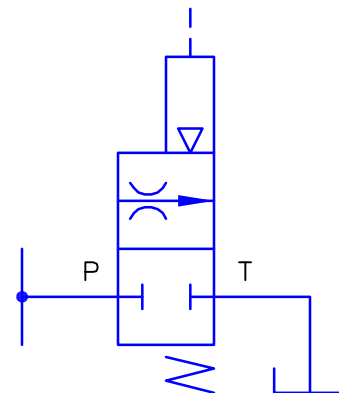
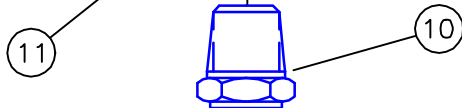
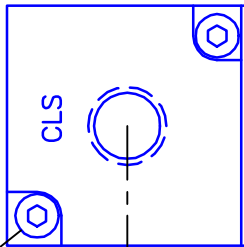
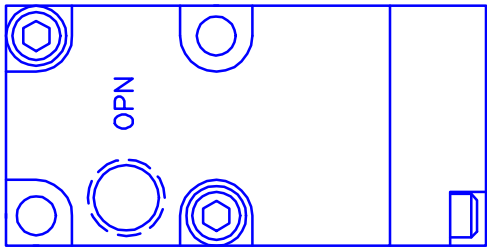
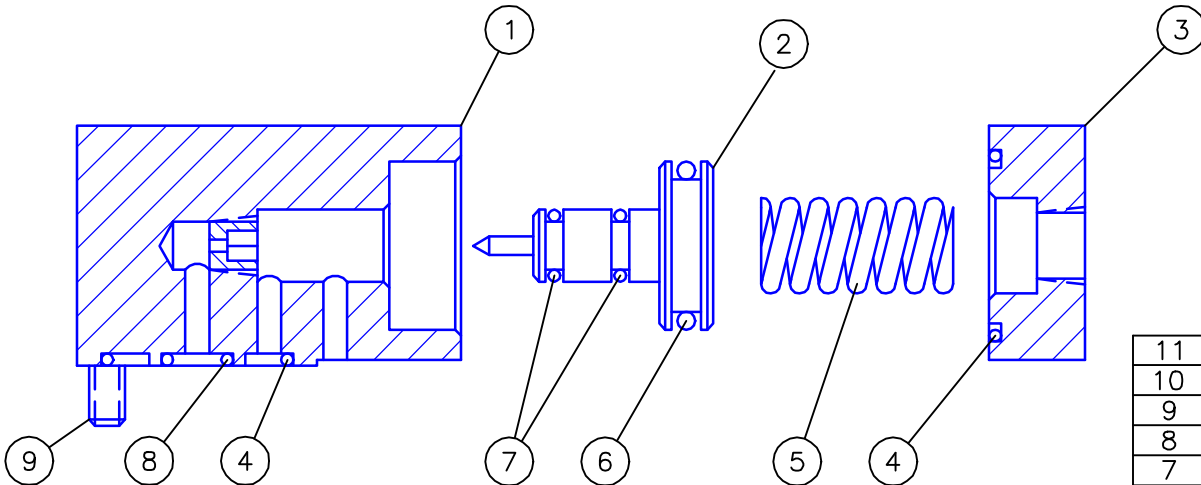


REV	DESCRIPTION	DATE
A	ADDED NEW IDI PART NUMBERS	7/23/01



NC HYD SYM



11	2	6-32 x .50	SCREW, SOC HD CAP
10	1	10264	BREATHER, 1/8 NPT
9	2	10-24 x .88	SCREW, SOC HD CAP
8	1	SO-010D7	O-RING
7	2	SO-010B7	O-RING
6	1	SO-115B7	O-RING
5	1	C0480-063-1000M	COMPRESSION SPRING
4	2	SO-020B7	O-RING
3	1	10284	CAP
2	1	10538	PISTON/NEEDLE
1	1	10113	HOUSING & SEAT
ITEM	QTY	PART NUMBER	DESCRIPTION

DESCRIPTION: A SUBPLATE MOUNTED, NORMALLY CLOSED, ZERO-LEAKAGE, 10,000 PSI HYDRAULIC DUMP VALVE-AIR PILOT OPERATED (65 PSI MIN).

		INTERFACE DEVICES, INC. 230 DEPOT ROAD MILFORD, CT 06460	
SCALE: FULL	TITLE: DUMP VALVE ASSY (NORMALLY CLOSED)		
DWN BY: TWH			
DATE: 5/12/93	REF:		
SHT: 1 OF: 1	DWG NO: EP-450	REV: A	

ASSEMBLY PART NUMBER: 10028