

REV	DESCRIPTION	DATE
B	PICTURE CHANGE SHT2 TOGGLE SW; ADDED NEW DI P/N'S; PICTURE CHANGE ITEM 6; ITEM 11 QTY WAS 2 P/N WAS SO-0082N7	11/21/00
C	ADDED 32 & 33; PICTURE CHANGE ITEM 6	10/23/02

1	29	2	SO-016B7	O-RING
1	28	A/R	WATERPROOF	GREASE
1	27	5	SO-011B7	O-RING
	26	REF	EP-3xx	RATIO PLATE ASSY
	25	1	10111	BODY, AIR CYLINDER
1	24	2	10334	GASKET, AIR BODY
	23	2	10-24 x 1.00	SCREW, SOC HD CAP
	22	4	5/16-18 x 1.75	SCREW, SOC HD CAP
	21	4	5/16-18 x 1.00	SCREW, SOC HD CAP
2	20	8	5/16 HI COLLAR	LOCK WASHER
	19	1	10015	AIR REG ASSY
	18	1	10342	AIR GAUGE (0-160 PSI)
	17	4	1/4-20 x 1.00	SCREW, SOC HD CAP
	16	4	1/4 HI COLLAR	LOCK WASHER
	15	1	1029B	PILOT CAP
	14	2	10264	BREATHER, 1/8 NPT

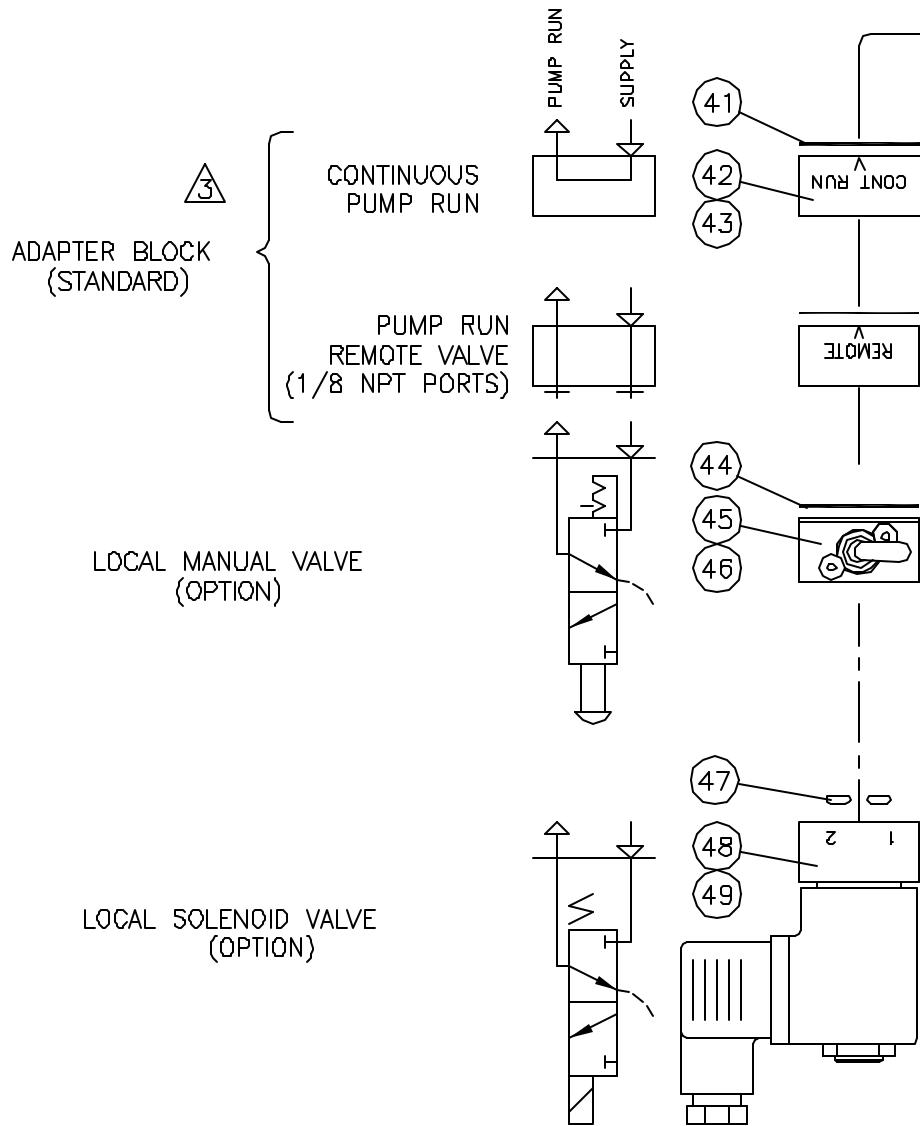
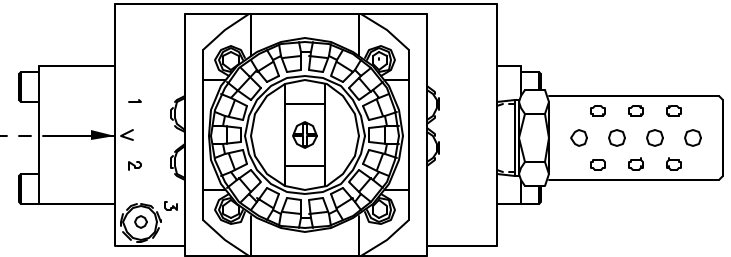
	13	1	1042B	MUFFLER
1	12	1	SO-111CN7	O-RING
1	11	1	SO-006B7	O-RING
	10	1	10004	AIR CAP HOUSING
	9	1	10305	SPOOL CAP
	8	1	10271	BUSHING, SHORT
	7	1	10269	BUSHING, LONG
2	6	1	10659	AIR SPOOL
1	5	6	10629	TEE SEAL
	4	5	10273	CAGE
1	3	1	SO-019B7	O-RING
	2	2	10-24 x .62	SCREW, SOC HD CAP
2	1	2	10017	2-WAY AIR VLV ASSY

ITEM	QTY	PART NUMBER	DESCRIPTION
INTERFACE DEVICES, INC. 230 DEPOT ROAD MILFORD, CT 06460			
SCALE: HALF		TITLE: ASSEMBLY, E SERIES PUMP	
DWN BY: WNI			
DATE: 5/27/98		REF: UNBALANCED AIR SPOOL	
SHT: 1 OF 2		DWG NO: MEXXX/XX-RGPM	
		REV: C	

- NOTES**
- 1 RECOMMENDED SPARES ITEM: SEAL KIT
 - 2 RECOMMENDED SPARES ITEM: OTHER
 - 3 LIGHTLY APPLY ITEM 28 "GREASE" TO ALL SEALS AND MATING PARTS AT ASSEMBLY

NOTES

- 1 PORT 3 IS COMMON TO PORT 2.
CONNECT PORT 3 TO REMOTE AIR PILOT OPERATED
HYDRAULIC RELEASE VALVE
- 2 MOUNTING SCREWS AND GASKET/O-RINGS ARE
FURNISHED FOR EACH OPTION
- 3 ROTATE ADAPTER BLOCK TO MATCH "V" STAMPED
ON AIR CAP FOR THE DESIRED FUNCTION



VOLTAGE	ITEM 48 P/N
110 VAC	10727
24 VDC	10728

ITEM	QTY	PART NUMBER	DESCRIPTION
50			
49	2	M4 x 20	SCREW, FLAT HEAD
48	1	SEE CHART	SOL AIR VALVE
47	2	S0-006B7	O-RING, 006B7
46	2	M4 x 20	SCREW, FLAT HD
45	1	10743	MAN TOGGLE SWITCH
44	1	10333	GASKET
43	2	M4 x 20	SCREW, FLAT HD
42	1	10100	BLOCK, ADAPTER
41	1	10333	GASKET

		INTERFACE DEVICES, INC. 230 DEPOT ROAD MILFORD, CT 06460	
SCALE: HALF	TITLE: ASSEMBLY, E SERIES PUMP		
DWN BY: WNI			
DATE: 5/27/98	REF: UNBALANCED AIR SPOOL		
SHT: 2 OF: 2	DWG NO: MEXXX/XX-RGPM	REV: C	

File Name: Z:\PROGRAMS\ACADDWG\E-SERIES\XA\XA-EPUMP-UB-C.DWG