

5:1 AIR BOOSTER

MODEL NUMBER EAB-05

INSTALLATION, OPERATION & MAINTENANCE MANUAL

INTERFACE DEVICES, INC.  
230 DEPOT RD.  
MILFORD, CT. 06460

PH: 203/878-4648  
FX: 203/882-0885

5:1 AIR BOOSTER  
TABLE OF CONTENTS

1.0 INSTALLATION & OPERATION	PAGE
1.1 Mounting.....	1
1.2 Connections.....	1
1.3 Start-up.....	1
2.0 MAINTAINENCE	
2.1 Routine maintenance.....	1
2.2 Troubleshooting.....	2
3.0 DRAWINGS ENCLOSED	
3.1 General Arrangement Drawing.....	3
3.1 Exploded view & bill of materials (SHT 1).....	4
3.2 Exploded view & bill of materials (SHT 2).....	5
3.3 Pneumatic schematic.....	6

## 1.0 INSTALLATION

### 1.1 MOUNTING:

The booster comes standard with foot mounting brackets at each end of the pump (for 1/4 inch screws).

The unit may be mounted vertically (wall mount) or horizontally (floor mount).

### 1.2 CONNECTIONS:

Connect CLEAN AND FILTERED shop air (**150 psi maximum**) to the 1/2" NPT "AIR IN" port on the pump. NO Air Regulator or Lubricator is required.

Connect your high pressure circuit to the 1/4 NPT "OUT" port on the pump.

### 1.3 STARTUP:

Connect the compressed air supply to the pump.

If the unit is supplied with the optional on/off air toggle switch, move it to the "on" position.

Starting with the integral air regulator (on the pump) backed-out all the way, slowly increase the pressure by turning the regulator knob clockwise. The pump will start to cycle while regulated pressure flows directly through the pump to the circuit.

The pump will stall when circuit pressure reaches 5 times the regulated pressure. The pump will maintain this pressure even if there is some circuit leakage. At this time check for and fix any circuit leaks since this only causes unnecessary air consumption and wear and tear on the pump.

## 2.0 MAINTAINENCE:

### 2.1 ROUTINE MAINTAINENCE:

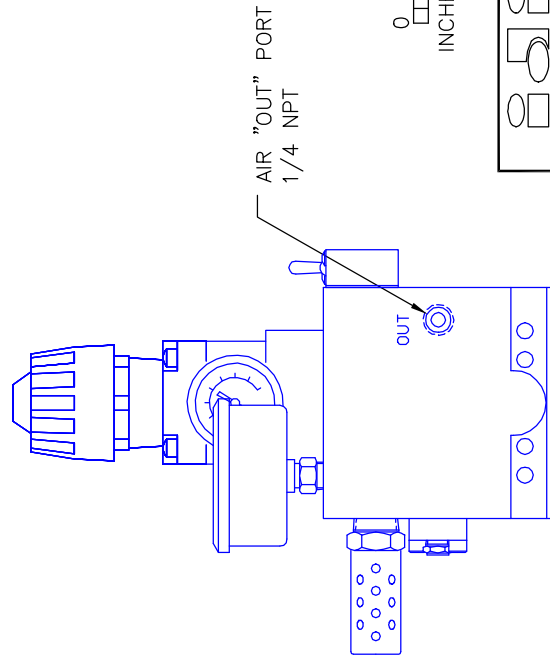
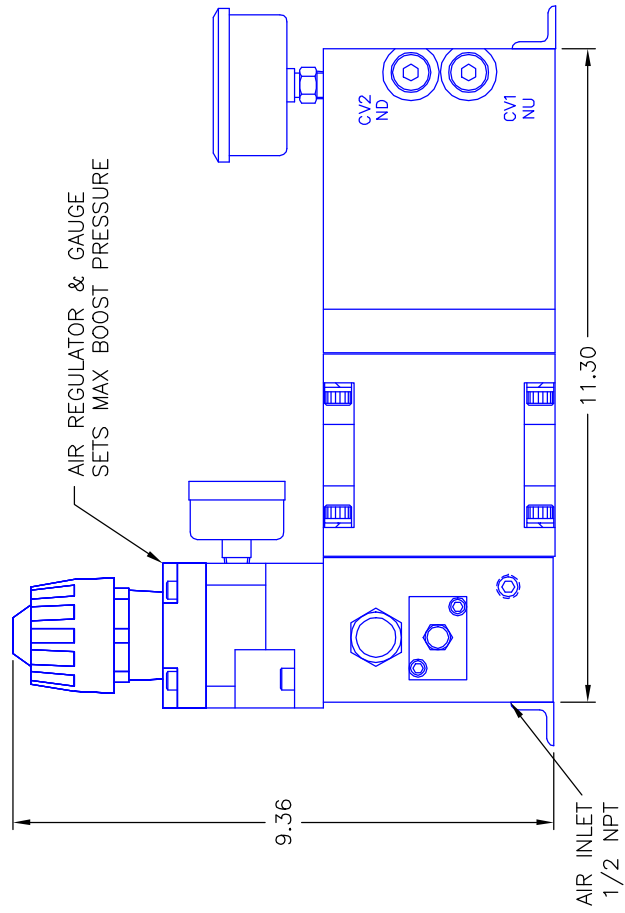
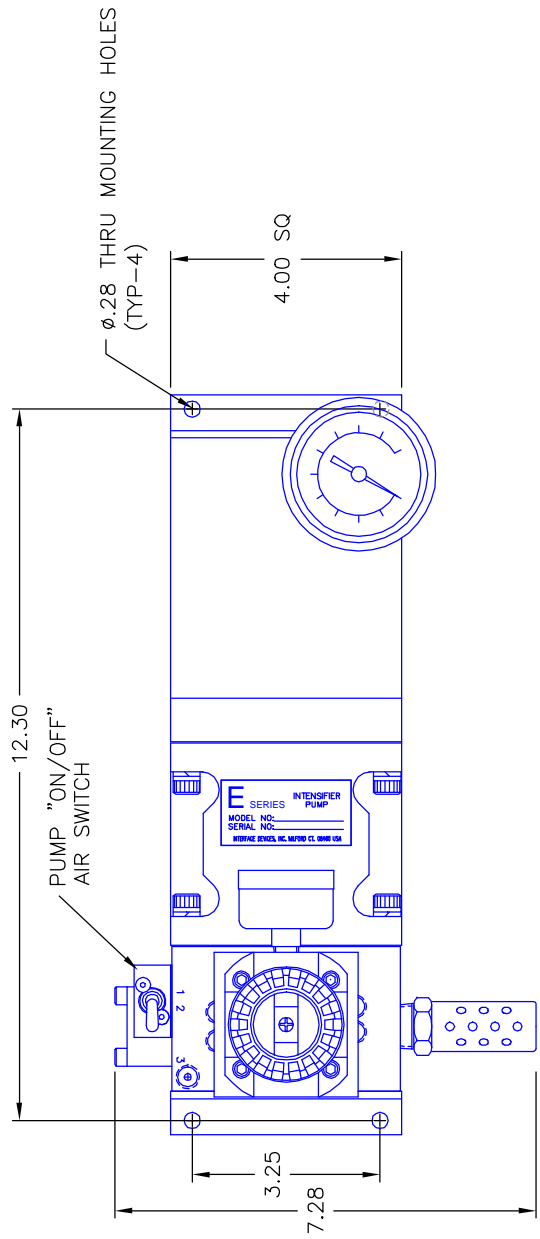
The only routine maintenance required is to re-grease the main air spool and it' six "T-seals" every 6 months.

2.2 TROUBLESHOOTING GUIDE: See following table on page 2.

5:1 AIR BOOSTER TROUBLESHOOTING GUIDE  
(Refer to enclosed Exploded View Drawing)

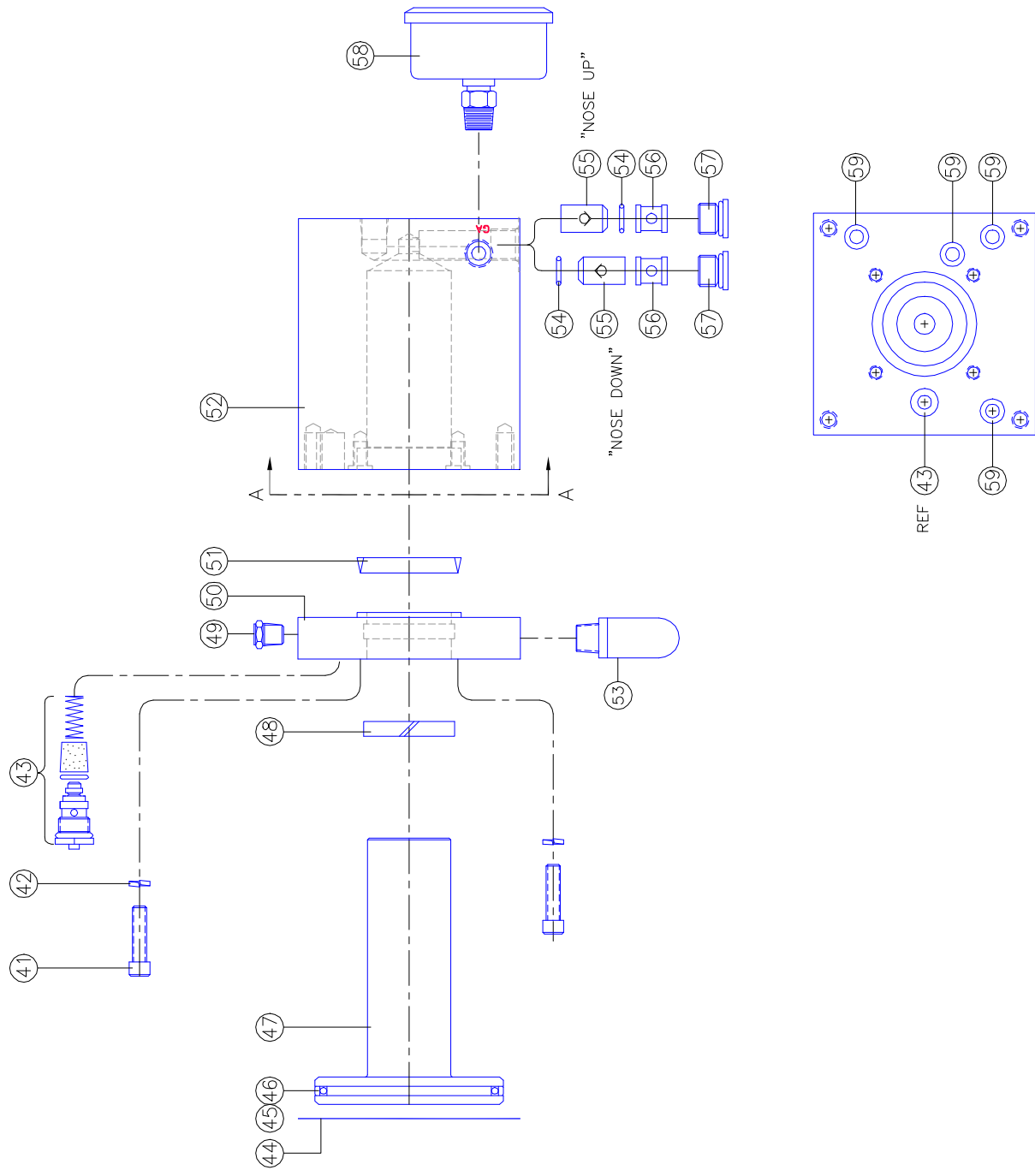
SYMPTOM	PROBABLE CAUSE(S)	REMEDY
<p>Pump will not cycle. (Only regulated nitrogen pressure at output)</p>	<p>No air supply to pump. Pump air regulator set too low.</p>	<p>Look for and fix. Increase setting.</p>
<p>Pump will <u>still</u> not cycle (Only regulated nitrogen pressure at output)</p>	<p>Four-way Air reciprocating valve spool stuck at mid-position.  After trying remedy above, spool still sticks:</p>	<p>Disconnect/Reconnect air supply (Re-sets air spool to start position.)  Remove 1/8 NPT Breather from spool cap, manually push spool to far end with probe through hole in the Cap. If stuck or requires excessive force, disassemble air valve assembly Inspect for contamination or mechanical bind. Repair or replace, lubricate seals with water-proof grease.</p>
<p>Pump makes one cycle, then stops.</p>	<p>Faulty "2-way air valve" (Broken, leaks or contaminated).</p>	<p>Repair or replace.</p>
<p>Pump cycles constantly when "dead-headed".</p>	<p>External leak at pump or downstream high pressure circuit.  Stuck open or contaminated "Check Valve" cartridge (2 places).  Internal leak in pump.</p>	<p>Look for and correct.  Clean or replace.  Check all dynamic and static seals and gaskets.</p>

For further assistance call INTERFACE DEVICES, INC. at 203/878-4648.



INTERFACE DEVICES, INC. 230 DEPOT ROAD MILFORD, CT 06460	
SCALE: NONE	TITLE: GENERAL ARRANGEMENT,
DWG BY: WNI	AIR BOOSTER
DATE: 2/19/02	EAB-04, EAB-05, & EAB-10
SHT: 1 OF: 1	REF:
DWG NO: GAO202191	REV:



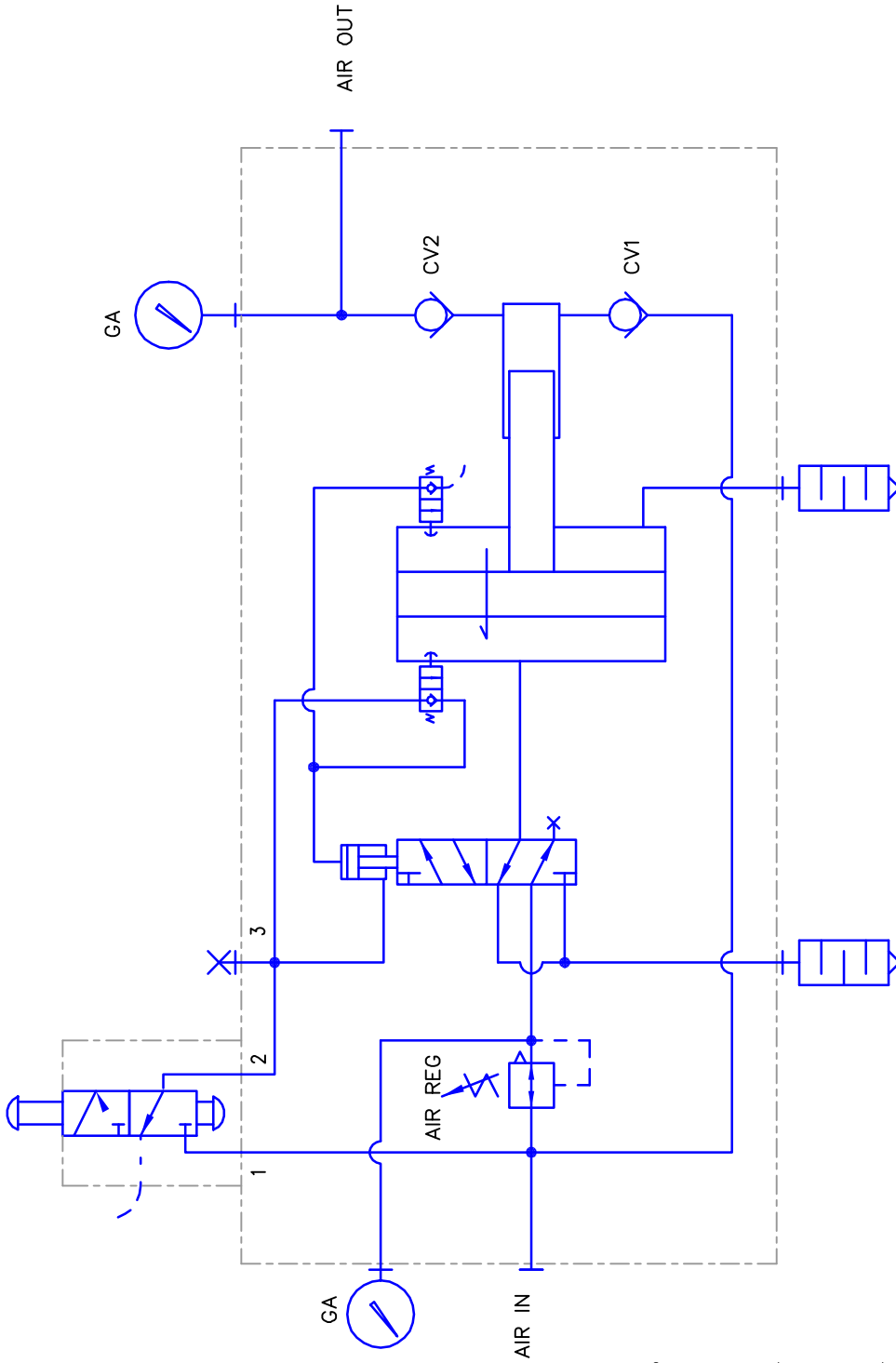


65			
64			
63			
62			
61			
60			
59	4	50-011B7	O-RING
58	1	2.5 $\phi$ , 1/4 NPT, BM GAUGE, 1000 PSI	
57	2	6HP50N	PLUG, -6 SAE
56	2	10605	RETAINER, CHECK VALVE
55	2	2203-B	CHECK VALVE
54	2	50-012B7	O-RING
53	1	B003	QUIET MUFFLER, 3/8
52	1	11082	BODY, AIR BOOSTER
51	1	W10MSR325Z1103	VARISEAL
50	1	11084	RATIO PLATE
49	1	EP-114-18	BREATHER, 1/8 NPT
48	1	GROA-01500-T24	SLYD RING
47	1	11083	PISTON
46	1	36G03375-29	GLYDE RING
45	1	50-233B7	O-RING
44	1	10334	GASKET, AIR BODY
43	1	10017	AIR VLV ASSY, 2-WAY
42	4	1/4 HI COLLAR	LOCKWASHER
41	4	1/4-20 x 1.00	SCREW, SOC HD CAP
ITEM	QTY	PART NUMBER	DESCRIPTION
INTERFACE DEVICES, INC. 230 DEPOT ROAD MILFORD, CT 06460			
SCALE: 1/2 TITLE: ASSEMBLY, BODY, 5:1 SA GAS BOOSTER			
DWN BY: WNI			
DATE: 2/4/02 REF:			
SHT: 2 OF: 2 DWG NO: EAB-05 REF:			

ASSEMBLY PART NUMBER 11092

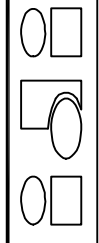
VIEW A-A

PUMP ON/OFF  
MANUAL VALVE



File Name: Z:\PROGRAMS\ACADDWCS\Schem-Air\PS-EAB00.dwg

INTERFACE DEVICES, INC.  
230 DEPOT ROAD  
MILFORD, CT 06460



SCALE: N/A	TITLE: PNEUMATIC SCHEMATIC, SINGLE ACTING AIR BOOSTER
DWN BY: WNI	REF: INTERNAL SUPPLY
DATE: 2/5/02	DWG NO: PS-EAB00
SHT:1 OF:1	REV: