

10:1 AIR BOOSTER

MODEL NUMBER EAB-10

INSTALLATION, OPERATION & MAINTENANCE MANUAL

INTERFACE DEVICES, INC.
230 DEPOT RD.
MILFORD, CT. 06460

PH: 203/878-4648
FX: 203/882-0885

10:1 AIR BOOSTER
TABLE OF CONTENTS

1.0 INSTALLATION & OPERATION	PAGE
1.1 Mounting.....	1
1.2 Connections.....	1
1.3 Start-up.....	1
2.0 MAINTAINENCE	
2.1 Routine maintenance.....	1
2.2 Troubleshooting.....	2
3.0 DRAWINGS ENCLOSED	
3.1 General Arrangement Drawing.....	3
3.1 Exploded view & bill of materials (SHT 1).....	4
3.2 Exploded view & bill of materials (SHT 2).....	5
3.3 Pneumatic schematic.....	6

1.0 INSTALLATION

1.1 MOUNTING:

The booster comes standard with foot mounting brackets at each end of the pump (for 1/4 inch screws).

The unit may be mounted vertically (wall mount) or horizontally (floor mount).

1.2 CONNECTIONS:

Connect CLEAN AND FILTERED shop air (**150 psi maximum**) to the 1/2" NPT "AIR IN" port on the pump. NO Air Regulator or Lubricator is required.

Connect your high pressure circuit to the 1/4 NPT "OUT" port on the pump.

1.3 STARTUP:

Connect the compressed air supply to the pump.

If the unit is supplied with the optional on/off air toggle switch, move it to the "on" position.

Starting with the integral air regulator (on the pump) backed-out all the way, slowly increase the pressure by turning the regulator knob clockwise. The pump will start to cycle while regulated pressure flows directly through the pump to the circuit.

The pump will stall when circuit pressure reaches 10 times the regulated pressure. The pump will maintain this pressure even if there is some circuit leakage. At this time check for and fix any circuit leaks since this only causes unnecessary air consumption and wear and tear on the pump.

2.0 MAINTAINENCE:

2.1 ROUTINE MAINTAINENCE:

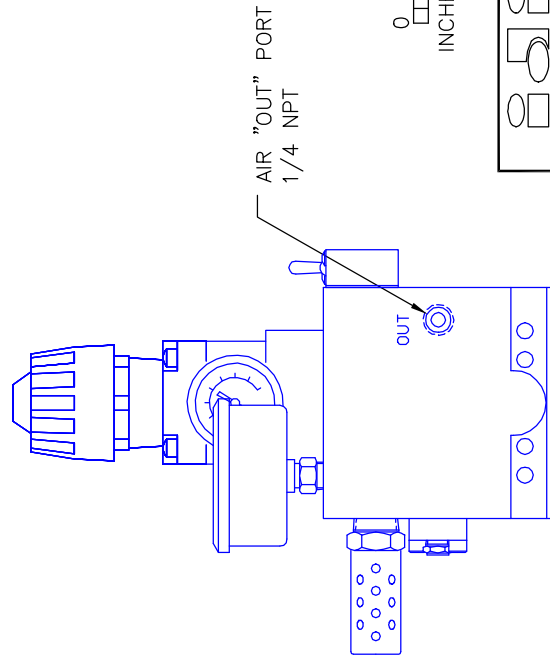
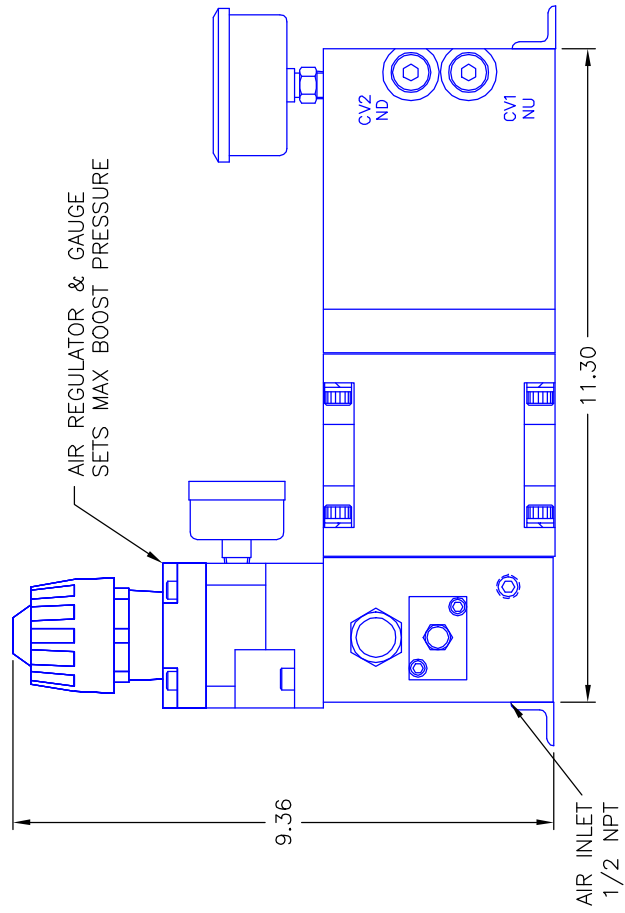
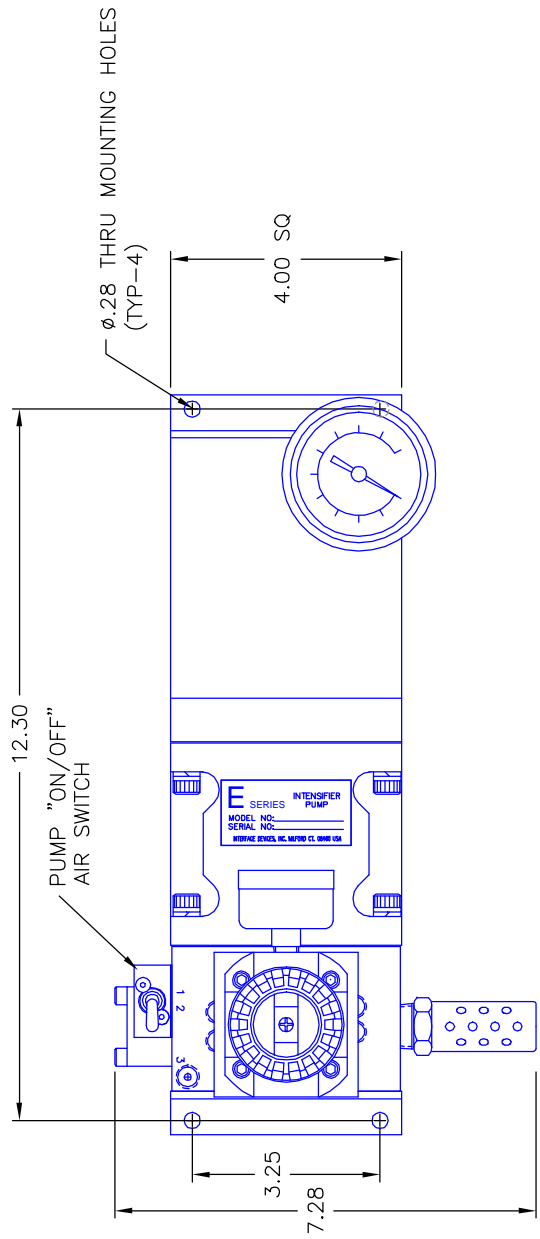
The only routine maintenance required is to re-grease the main air spool and it' six "T-seals" every 6 months.

2.2 TROUBLESHOOTING GUIDE: See following table on page 2.

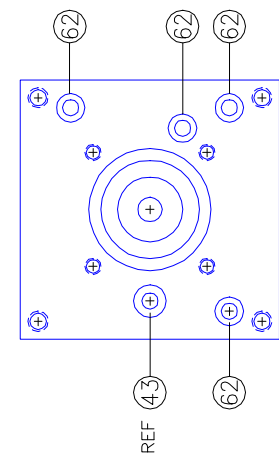
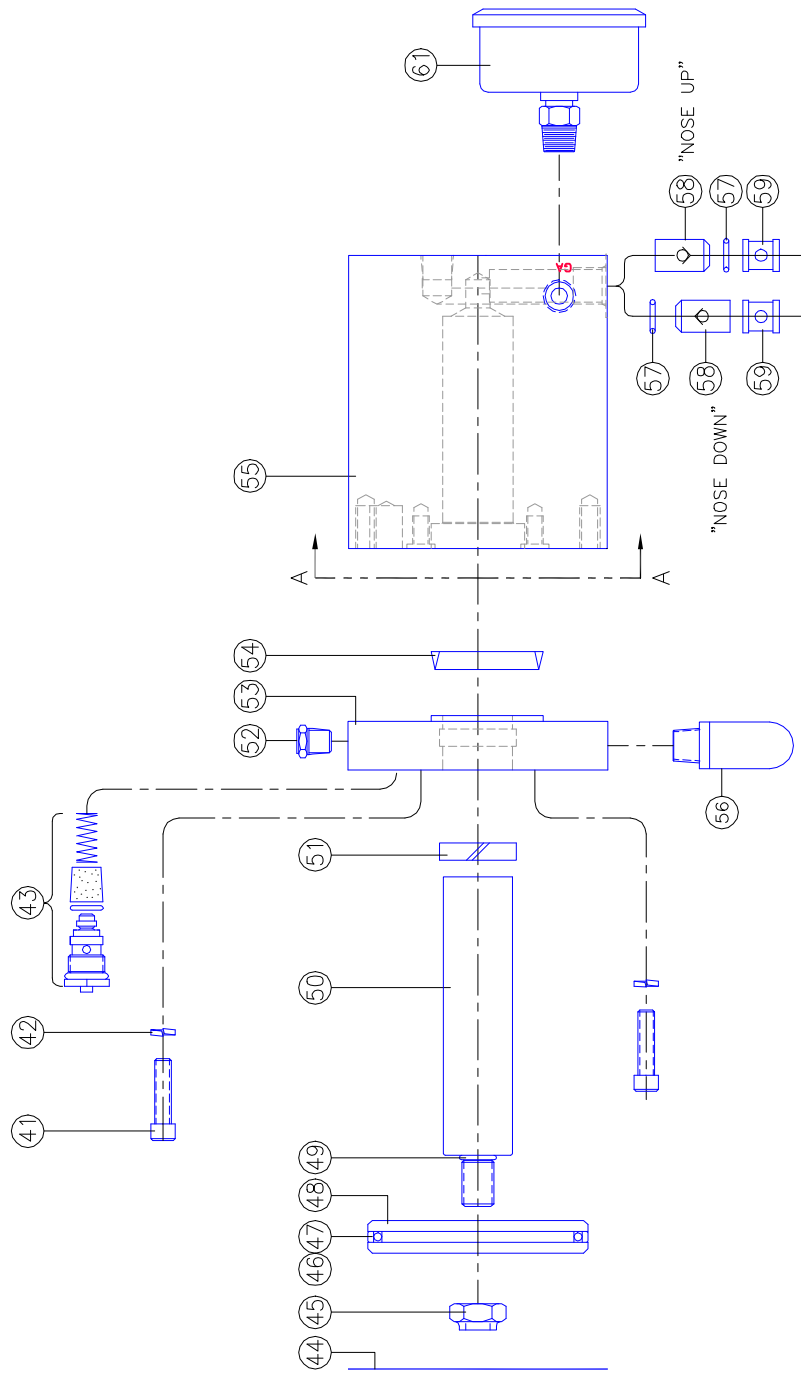
10:1 AIR BOOSTER TROUBLESHOOTING GUIDE
(Refer to enclosed Exploded View Drawing)

SYMPTOM	PROBABLE CAUSE(S)	REMEDY
<p>Pump will not cycle. (Only regulated nitrogen pressure at output)</p>	<p>No air supply to pump. Pump air regulator set too low.</p>	<p>Look for and fix. Increase setting.</p>
<p>Pump will <u>still</u> not cycle (Only regulated nitrogen pressure at output)</p>	<p>Four-way Air reciprocating valve spool stuck at mid-position. After trying remedy above, spool still sticks:</p>	<p>Disconnect/Reconnect air supply (Re-sets air spool to start position.) Remove 1/8 NPT Breather from spool cap, manually push spool to far end with probe through hole in the Cap. If stuck or requires excessive force, disassemble air valve assembly Inspect for contamination or mechanical bind. Repair or replace, lubricate seals with water-proof grease.</p>
<p>Pump makes one cycle, then stops.</p>	<p>Faulty "2-way air valve" (Broken, leaks or contaminated).</p>	<p>Repair or replace.</p>
<p>Pump cycles constantly when "dead-headed".</p>	<p>External leak at pump or downstream high pressure circuit. Stuck open or contaminated "Check Valve" cartridge (2 places). Internal leak in pump.</p>	<p>Look for and correct. Clean or replace. Check all dynamic and static seals and gaskets.</p>

For further assistance call INTERFACE DEVICES, INC. at 203/878-4648.



INTERFACE DEVICES, INC. 230 DEPOT ROAD MILFORD, CT 06460	
SCALE: NONE	TITLE: GENERAL ARRANGEMENT,
DWG BY: WNI	AIR BOOSTER
DATE: 2/19/02	EAB-04, EAB-05, & EAB-10
SHT: 1 OF: 1	REF:
DWG NO: GAO202191	REV:



ITEM	QTY	PART NUMBER	DESCRIPTION
65			
64			
63			
62	4	50-011B7	O-RING
61	1	2.96, 1/4 NPT, BM GAUGE, 1000 PSI	
60	2	6HP50N	PLUG, -6 SAE
59	2	10605	RETAINER CHECK VALVE
58	2	2203-B	CHECK VALVE
57	2	50-012B7	O-RING
56	1	BQ03	QUIET MUFFLER, 3/8
55	1	11100	BODY AIR BOOSTER
54	1	WT0MSR319ZZ1103	VARISEAL
53	1	11102	RATIO PLATE
52	1	FP-114-18	BREATHER, 1/8 NPT
51	1	6R0A-01062-T24	SLYD RING
50	1	11101	PISTON
49	1	50-905B7	O-RING
48	1	10479	AIR PISTON, -5
47	1	36G03375-29	GLYDE RING
46	1	50-233B7	O-RING
45	1	1/2-20 NF	FLEXLOC NUT
44	1	10334	GASKET AIR BODY
43	1	10017	AIR VLV ASSY, 2-WAY
42	4	1/4 HI COLLAR	LOCKWASHER
41	4	1/4-20 x 1.00	SCREW, SOC HD CAP

INTERFACE DEVICES, INC.
230 DEPOT ROAD
MILFORD, CT 06460

SCALE: 1/2 TITLE: ASSEMBLY, BODY,
10:1 SA GAS BOOSTER

DWG BR: WNI

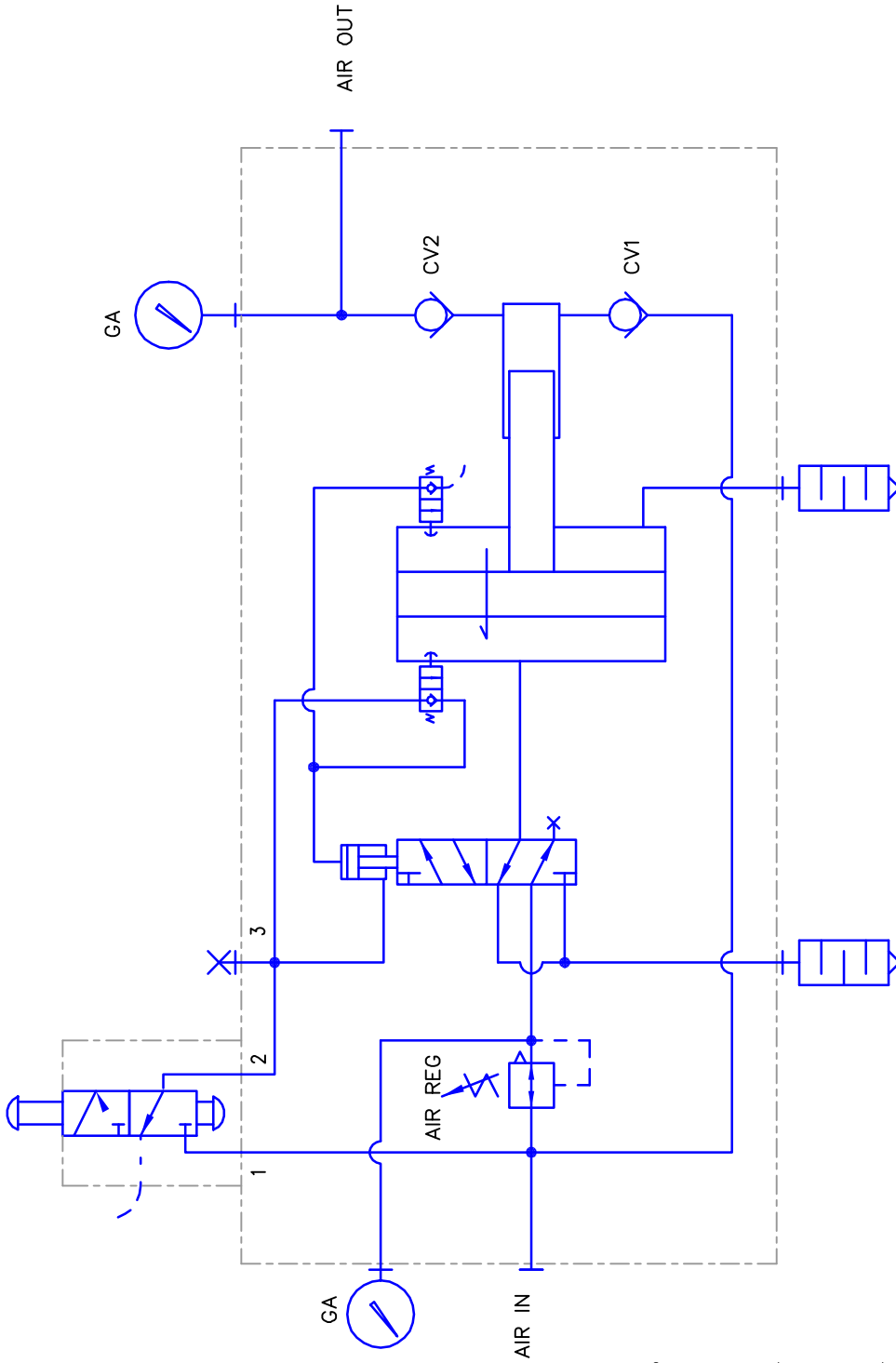
DATE: 2/11/02 REF: EAB-10

SHT: 2 OF: 2 DWG NO: XA-EAB-10 REF:

ASSEMBLY PART NUMBER 11103

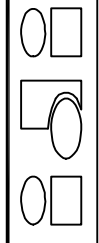
VIEW A-A

PUMP ON/OFF
MANUAL VALVE



File Name: Z:\PROGRAMS\ACADDWCS\Schem-Air\PS-EAB00.dwg

INTERFACE DEVICES, INC.
230 DEPOT ROAD
MILFORD, CT 06460



SCALE: N/A	TITLE: PNEUMATIC SCHEMATIC, SINGLE ACTING AIR BOOSTER
DWN BY: WNI	REF: INTERNAL SUPPLY
DATE: 2/5/02	DWG NO: PS-EAB00
SHT: 1 OF: 1	REV: