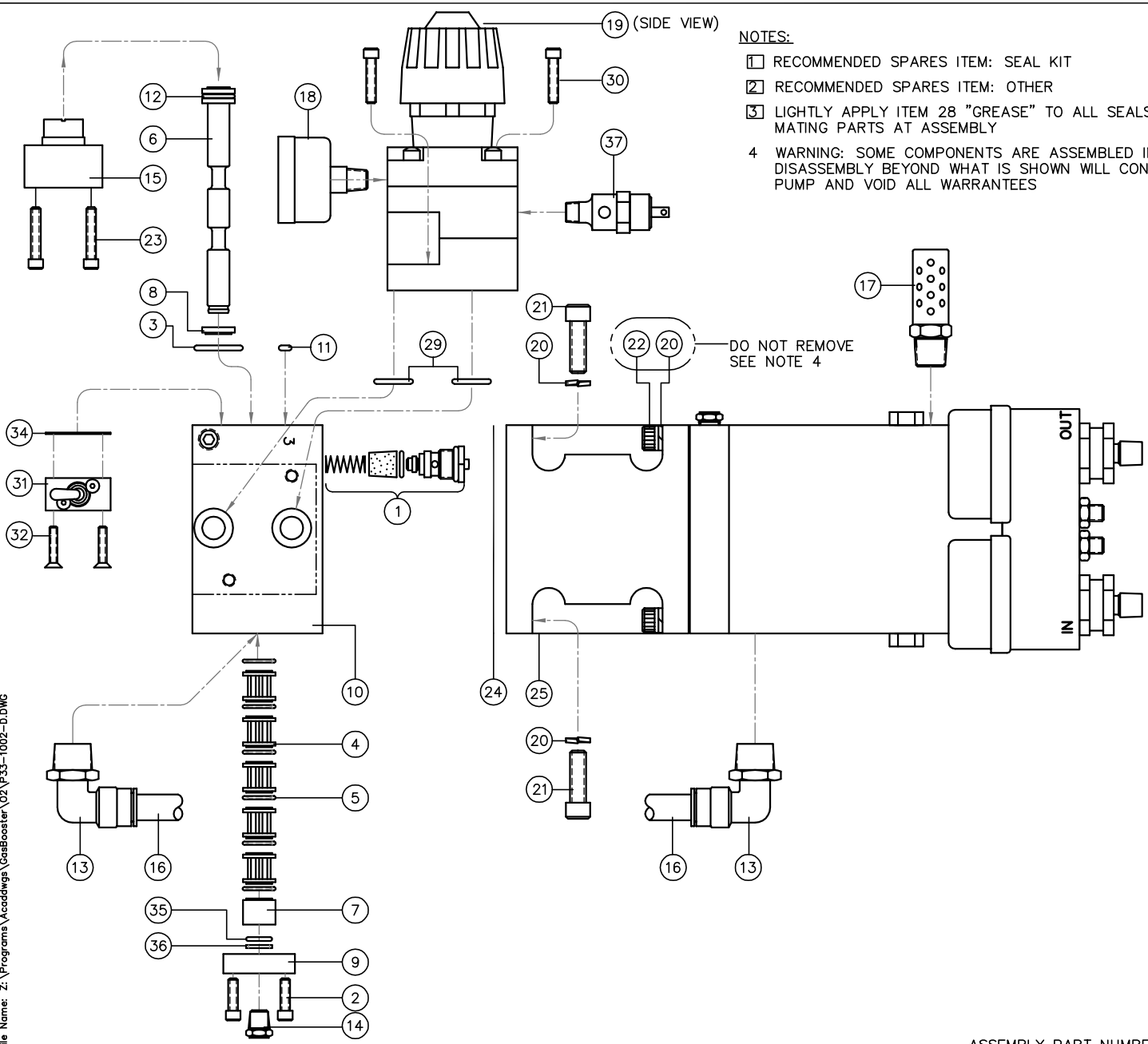


File Name: Z:\Programs\Acaddwggs\GasBooster\02\P33-1002-D.DWG



NOTES:

- 1 RECOMMENDED SPARES ITEM: SEAL KIT
- 2 RECOMMENDED SPARES ITEM: OTHER
- 3 LIGHTLY APPLY ITEM 28 "GREASE" TO ALL SEALS AND MATING PARTS AT ASSEMBLY
- 4 WARNING: SOME COMPONENTS ARE ASSEMBLED IN A "CLEAN" ROOM. DISASSEMBLY BEYOND WHAT IS SHOWN WILL CONTAMINATE THE PUMP AND VOID ALL WARRANTIES

REV	DESCRIPTION	DATE
A	DET 59 QTY WAS 4	4/24/03
B	ITEM 17 WAS 1/4 NPT MUFFLER; SEE SHEET 2	7/17/03
C	ITEM 63 WAS 4HP50N-SS (SEE SHT 2)	8/19/03
D	ADDED IDI PART NUMBERS	3/24/05

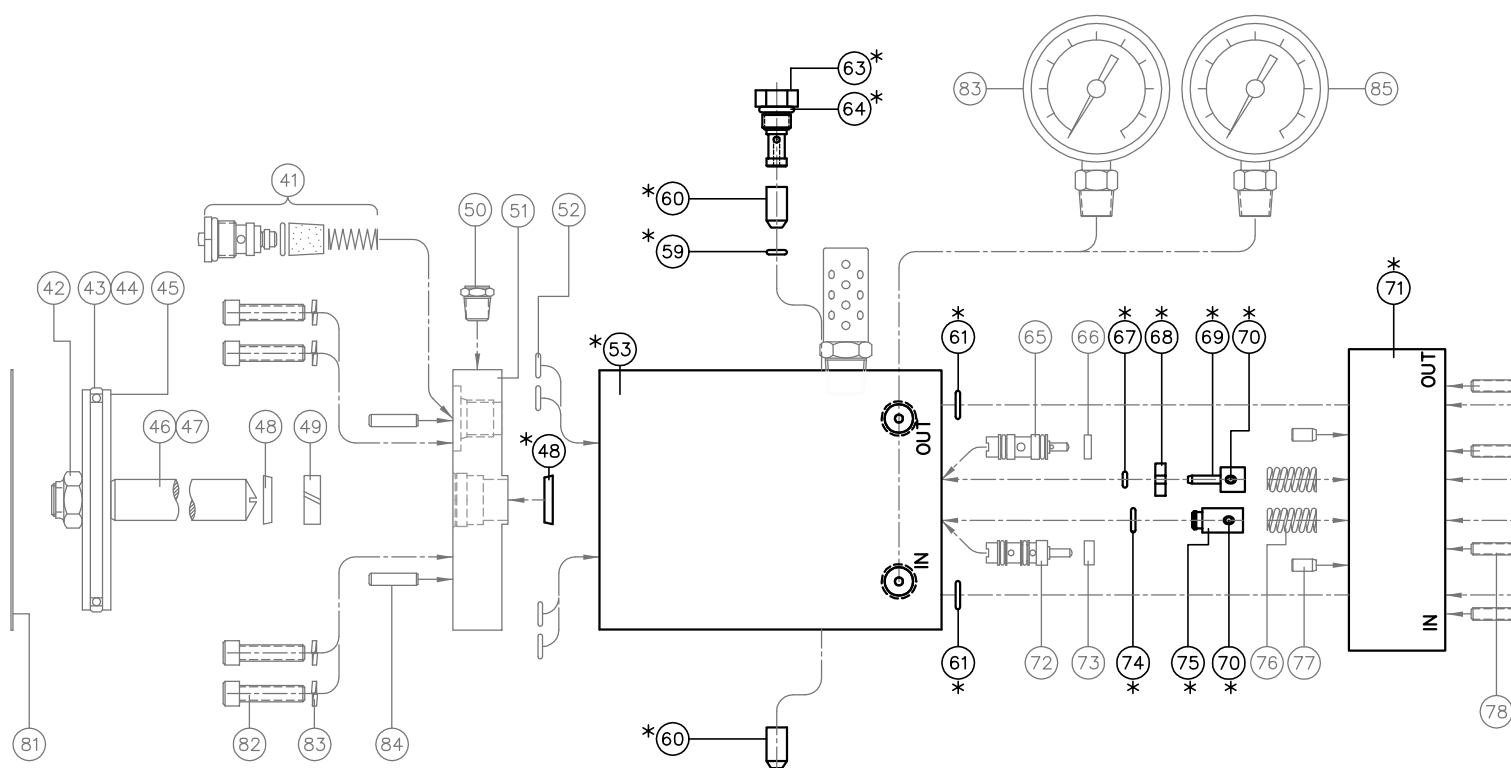
40			
39			
38			
37	1	11236 M04-1006	RELIEF VALVE, 1/8 NPT
36	1	-012	TEFLON BACKUP RING
35	1	SO-012 6865	O-RING
1	34	1	10333 V04-5001 GASKET, TOGGLE VLV
33			
32	2	M4 x 20	SCREW, FLAT HD
31	1	10743 V04-1001	VALVE, 3-W, TOGGLE
30	2	1/4-20 x .88	SCREW, SOC HD CAP
1	29	2	SO-016B7 O-RING
3	28	A/R	WATERPROOF GREASE
27			
26			
25	1	10111 P12-5202	BODY, AIR CYLINDER
1	24	1	10334 P00-5205 GASKET, AIR BODY
23	2	10-24 x 1.00	SCREW, SOC HD CAP
22	4	5/16-18 x 1.75	SCREW, SOC HD CAP
21	4	5/16-18 x 1.00	SCREW, SOC HD CAP
20	8	5/16 HI COLLAR	LOCK WASHER
2	19	1	10015 P12-1202 AIR REG ASSY
18	1	10342	AIR GAUGE (0-160 PSI)
17	2	10431	MUFFLER, 3/8 NPT
16	5"	NYLON N2	TUBING, Ø.50
15	1	10298 P00-5207	PILOT CAP
14	1	10264	BREATHER, 1/8 NPT
13	2	6520-08-08	FITTING
1	12	1	SO-111CN7 O-RING
1	11	1	SO-006CN7 O-RING
10	1	10004 P12-5201	AIR CAP HOUSING
9	1	10299 P00-5208	SPOOL CAP
8	1	10271 P00-5212	BUSHING, SHORT
7	1	10269 P00-5210	BUSHING, LONG
6	1	10942 P33-5201	AIR SPOOL
1	5	6	10629 TEE SEAL
4	5	10273 P00-5209	CAGE
1	3	1	SO-019B7 O-RING
2	2	10-24 x .62	SCREW, SOC HD CAP
1	1	10017 V04-1005	2-WAY AIR VLV ASSY
ITEM	QTY	PART NUMBER	DESCRIPTION



INTERFACE DEVICES, INC.
230 DEPOT ROAD
MILFORD, CT 06460

SCALE: 1/2	TITLE: O2 BOOSTER, BILL OF MATERIALS
DWN BY: WNI	REF: UNBALANCED AIR SPOOL
DATE: 2/24/03	REF: UNBALANCED AIR SPOOL
SHT: 1 OF 2	DWG NO: P33-1002
	REV: D

ASSEMBLY PART NUMBER: 10943



REV	DESCRIPTION	DATE
A	DET 59 QTY WAS 4	4/24/03
B	MOVED FILTERS (54-57) FROM BODY TO MANIFOLD ITEM 63 WAS SWIVEL NUT ELBOW; NEW BODY; NEW MANIFOLD; SEE SHEET 1	7/17/03
C	ITEM 63 WAS 4HP50N-SS	8/19/03
D	ADDED IDI PART NUMBERS	3/24/05

NOTES

- PARTS MARKED "*" TO BE CLEANED PER ARP 1176
- WARNING: COMPONENTS SHOWN ON THIS SHEET ARE ASSEMBLED IN A "CLEAN" ROOM. DISASSEMBLY BY UNAUTHORIZED INDIVIDUALS WILL CONTAMINATE THE PUMP AND VOID ALL WARRANTIES

ITEM	QTY	PART NUMBER	DESCRIPTION
85	2	10348 M04-1005	GAUGE, 1/4NPT, BRASS, 3K
84	2	ø3/16 x .75	DOWEL PIN, SS
83	4	1/4 HI COLLAR	LOCK WASHER, SS
82	4	1/4-20 x 1.00	SHCS, SS
81	1	10334 P00-5205	GASKET, AIR BODY
80	2	5/16-24	HEX JAM NUT, SS
79	2	5/16-24 x 1.00	SET SCR, SS
78	7	10-24 x 1.50	SHCS, SS
77	2	3/16ø x .38	DOWEL PIN, SS
76	2	LHL-375A-01	SPRING, SS
* 75	1	10529 P33-5608	LO PISTON
* 74	1	SO-010-9250	O-RING, POLY
73	1	10610 P33-5609	RETAINER
72	1	10693	VALVE, 3-W, NO
* 71	1	11257 P33-5604	MANIFOLD

ITEM	QTY	PART NUMBER	DESCRIPTION
* 70	2	ø3/32 x .88	SPRING PIN, SS
* 69	1	10488 P33-5606	HI PISTON
* 68	1	10609 P33-5610	RETAINER
* 67	1	SO-006-9250	O-RING, POLY
66	1	10608 P33-5607	RETAINER (.109")
65	1	10451	VALVE, 3-W, NC
* 64	4	SO-012-9250	O-RING, POLY
* 63	2	11288 P32-5602	PLUG, CV RETAINER
* 62	2	TC1\10	PLASTIC CAP
* 61	2	SO-011-9250	O-RING, POLY
* 60	2	10694 M04-1002	CHECK VALVE (2201D-3-5)
* 59	2	SO-008-9250	O-RING, POLY
58			
* 57	2	11266	FILTER, INLINE
56	2	11265 P33-5801	LOCK PLATE

55			
54	2	1/4-20 x .38	BHCS
* 53	1	11255 P33-5602	BODY
52	6	SO-011-9250	O-RING, BUNA
51	1	10565 P33-5401	RATIO PLATE
50	2	10264	BREATHER
49	1	.062 x .25	ROD BEARING, TEFLON
* 48	2	10886 M03-1008	VARISEAL
47	1	10485 P33-5501	PISTON ROD
46	1	SO-905B7	O-RING
45	1	10479 P00-5204	AIR PISTON, -5 SAE
44	1	10377	GLYDE RING
43	1	SO-233B7	O-RING
42	1	1/2-20	FLEXLOC JAM NUT
41	1	10017 V04-1005	2-WAY AIR VLV ASSY

ITEM	QTY	PART NUMBER	DESCRIPTION
INTERFACE DEVICES, INC. 230 DEPOT ROAD MILFORD, CT 06460			
SCALE:	1/2	TITLE:	O2 BOOSTER, BILL OF MATERIALS
DWN BY:	WNI	DATE:	2/24/03
DATE:	2/24/03	REF:	UNBALANCED AIR SPOOL
SHT:	2 OF 2	DWG NO:	P33-1002
		REV:	D