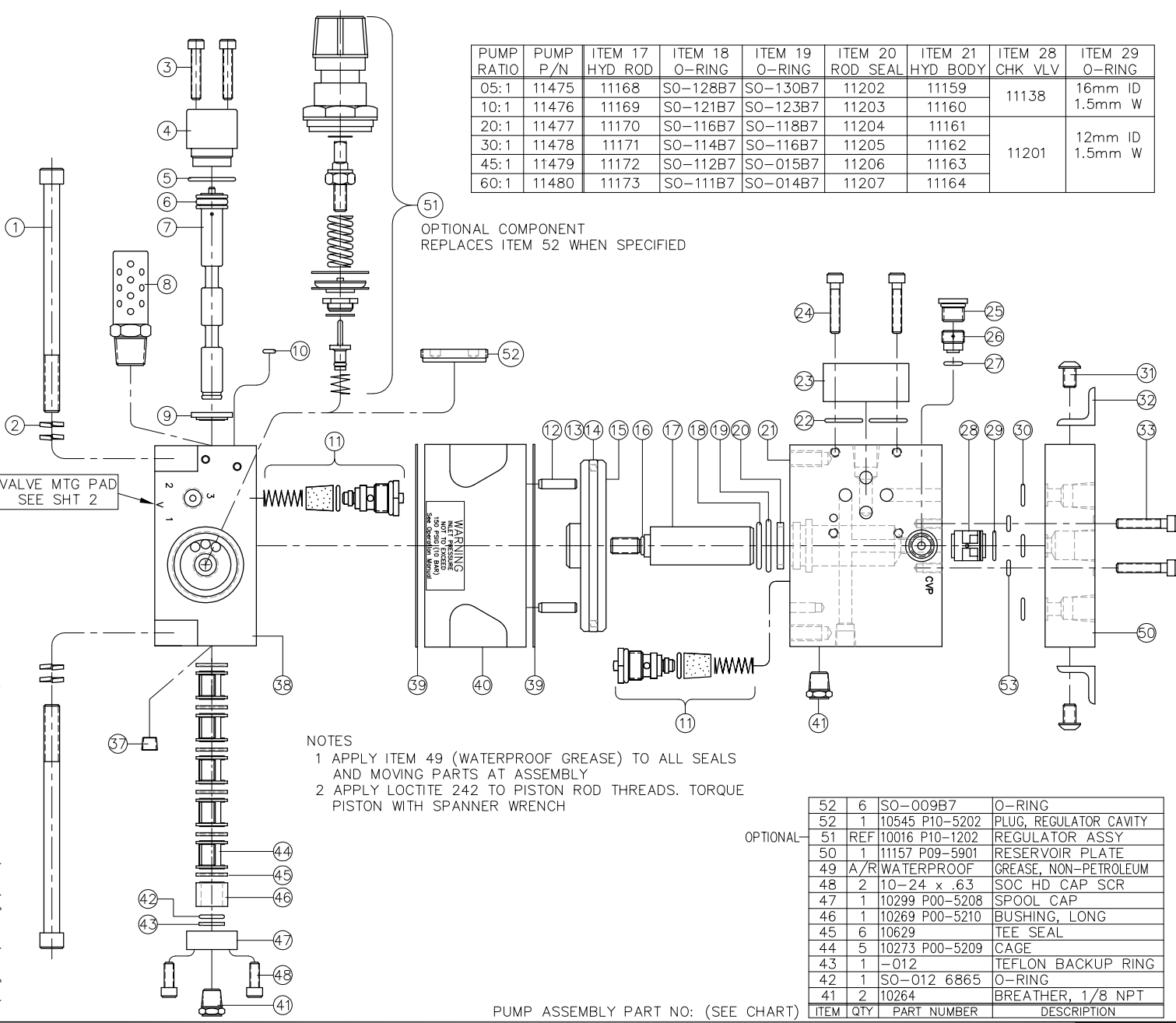


Z:\Programs_Accdraws\TASQ\P09-1002-A.DWG Plotted: Jan 31, 2005 1:25PM



| PUMP RATIO | PUMP P/N | ITEM 17 HYD ROD | ITEM 18 O-RING | ITEM 19 O-RING | ITEM 20 ROD SEAL | ITEM 21 HYD BODY | ITEM 28 CHK VLV | ITEM 29 O-RING |
|------------|----------|-----------------|----------------|----------------|------------------|------------------|-----------------|----------------|
| 05:1 | 11475 | 11168 | SO-128B7 | SO-130B7 | 11202 | 11159 | 11138 | 16mm ID |
| 10:1 | 11476 | 11169 | SO-121B7 | SO-123B7 | 11203 | 11160 | | 1.5mm W |
| 20:1 | 11477 | 11170 | SO-116B7 | SO-118B7 | 11204 | 11161 | | |
| 30:1 | 11478 | 11171 | SO-114B7 | SO-116B7 | 11205 | 11162 | 11201 | 12mm ID |
| 45:1 | 11479 | 11172 | SO-112B7 | SO-015B7 | 11206 | 11163 | | 1.5mm W |
| 60:1 | 11480 | 11173 | SO-111B7 | SO-014B7 | 11207 | 11164 | | |

OPTIONAL COMPONENT REPLACES ITEM 52 WHEN SPECIFIED

- NOTES
- 1 APPLY ITEM 49 (WATERPROOF GREASE) TO ALL SEALS AND MOVING PARTS AT ASSEMBLY
 - 2 APPLY LOCTITE 242 TO PISTON ROD THREADS. TORQUE PISTON WITH SPANNER WRENCH

| ITEM | QTY | PART NUMBER | DESCRIPTION |
|------|-----|----------------------------------|------------------------|
| 52 | 6 | SO-009B7 | O-RING |
| 52 | 1 | 10545 P10-5202 | PLUG, REGULATOR CAVITY |
| 51 | REF | 10016 P10-1202 | REGULATOR ASSY |
| 50 | 1 | 11157 P09-5901 | RESERVOIR PLATE |
| 49 | A/R | WATERPROOF GREASE, NON-PETROLEUM | |
| 48 | 2 | 10-24 x .63 | SOC HD CAP SCR |
| 47 | 1 | 10299 P00-5208 | SPOOL CAP |
| 46 | 1 | 10269 P00-5210 | BUSHING, LONG |
| 45 | 6 | 10629 | TEE SEAL |
| 44 | 5 | 10273 P00-5209 | CAGE |
| 43 | 1 | -012 | TEFLON BACKUP RING |
| 42 | 1 | SO-012 6865 | O-RING |
| 41 | 2 | 10264 | BREATHER, 1/8 NPT |

PUMP ASSEMBLY PART NO: (SEE CHART)

| REV | DESCRIPTION | BY | DATE |
|-----|--|-----|---------|
| A | ADDED 52; ITEM 53 NOW REF (OPTIONAL COMPONENT) | WNI | 1/31/05 |

| | | | |
|----|-----|----------------|--------------------|
| 40 | 1 | 10112 P10-5203 | AIR BODY |
| 39 | 2 | 10334 P00-5205 | GASKET, AIR BODY |
| 38 | 1 | 10006 P10-5201 | AIR CAP |
| 37 | 2 | 1/8 HHP-S | PIPE PLUG, 1/8 NPT |
| 36 | 1 | 10333 V04-5001 | GASKET |
| 35 | 1 | 10100 P00-5206 | CROSSOVER BLOCK |
| 34 | 2 | M4 x 20 | FLT HD SCR |
| 33 | 6 | 10-24 x 1.00 | SOC HD CAP SCR |
| 32 | 2 | 10262 P00-5801 | MOUNTING BRACKET |
| 31 | 4 | 1/4-20 x .38 | BUT HD CAP SCR |
| 30 | 3 | SO-011B7 | O-RING |
| 29 | 1 | SEE CHART | O-RING |
| 28 | 1 | SEE CHART | CHECK VALVE (S) |
| 27 | 1 | SO-010B7 | O-RING |
| 26 | 1 | 10698 | CHECK VALVE (P) |
| 25 | 1 | 4HP50N-S | HOLLOW HEX PLUG |
| 24 | REF | 10-24 x 1.00 | SOC HD CAP SCR |
| 23 | 1 | 11200 M50-0003 | DO3 XOVER PLATE |
| 22 | REF | O16 | O-RING |
| 21 | 1 | SEE CHART | HYDRAULIC BODY |
| 20 | 1 | SEE CHART | ROD SEAL |
| 19 | 1 | SEE CHART | O-RING |
| 18 | 1 | SEE CHART | O-RING |
| 17 | 1 | SEE CHART | HYDRAULIC ROD |
| 16 | 1 | SO-902B7 | O-RING |
| 15 | 1 | 11167 P09-5201 | AIR PISTON |
| 14 | 1 | 10377 | GLYD RING |
| 13 | 1 | SO-233B7 | O-RING |
| 12 | 2 | ø.1875 X .62 | DOWEL PIN |
| 11 | 2 | 10017 V04-1005 | 2-WAY AIR VLV ASSY |
| 10 | 1 | SO-006B7 | O-RING |
| 9 | 1 | 10271 P00-5212 | SPACER, SHORT |
| 8 | 1 | 10431 | MUFFLER, 3/8 NPT |
| 7 | 1 | 10659 P00-5211 | SPOOL, AIR |
| 6 | 1 | SO-111CN7 | O-RING |
| 5 | 1 | SO-019B7 | O-RING |
| 4 | 1 | 10298 P00-5207 | PILOT CAP |
| 3 | 2 | 10-24 x 1.00 | SOC HD CAP SCR |
| 2 | 8 | 5/16 | HI COLLAR LOCKNUT |
| 1 | 4 | 5/16-18 x 4.00 | SOC HD CAP SCR |

INTERFACE DEVICES, INC.
230 DEPOT ROAD
MILFORD, CT 06460

| | |
|---------------|---|
| SCALE: 2X | TITLE: PUMP ASSEMBLY. TASQ SERIES, (INTEGRATED AIR REGULATOR) |
| DWN BY: WNI | DATE: 8/11/04 |
| DATE: 8/11/04 | REF: 20:1 THRU 60:1 RATIO |
| SHT: 1 OF: 2 | DWG NO: P09-1002 |
| | REV: A |

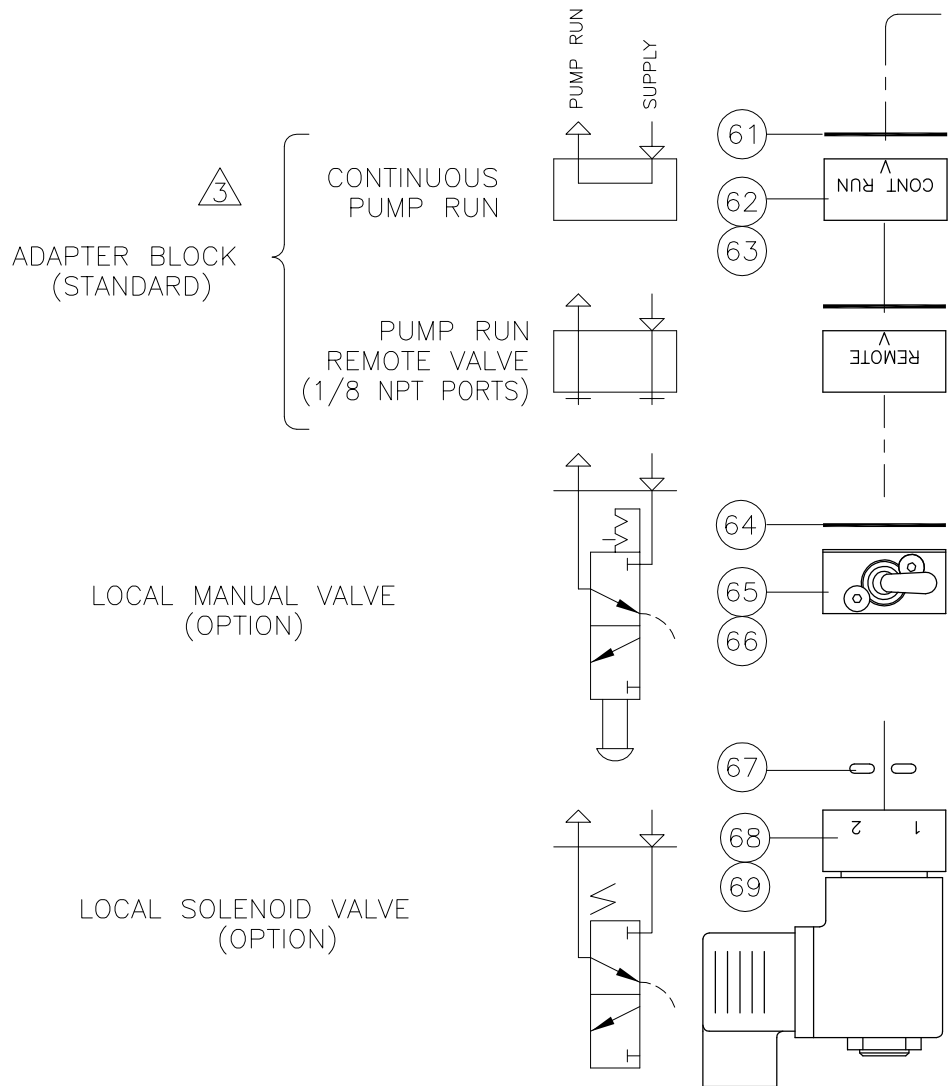
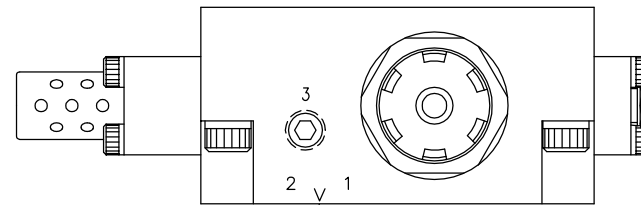
| REV | DESCRIPTION | BY | DATE |
|-----|--------------|-----|---------|
| A | SHEET 1 ONLY | WNI | 1/31/05 |

NOTES

1 PORT 3 IS COMMON TO PORT 2.
CONNECT PORT 3 TO REMOTE AIR PILOT OPERATED
HYDRAULIC RELEASE VALVE

2 MOUNTING SCREWS AND GASKET/O-RINGS ARE
FURNISHED FOR EACH OPTION

3 ROTATE ADAPTER BLOCK TO MATCH "V" STAMPED ON AIR CAP
FOR THE DESIRED FUNCTION



| VOLTAGE | ITEM 38 P/N |
|---------|-------------|
| 110 VAC | 10727 |
| 24 VDC | 10728 |

| ITEM | QTY | PART NUMBER | DESCRIPTION |
|------|-----|-------------|-------------------|
| 70 | | | |
| 69 | 2 | M4 x 20 | SCREW, FLAT HEAD |
| 68 | 1 | SEE CHART | SOL AIR VALVE |
| 67 | 2 | S0-006B7 | O-RING |
| 66 | 2 | M4 x 20 | SCREW, FLAT HEAD |
| 65 | 1 | 10449 | MAN TOGGLE SWITCH |
| 64 | 1 | 10333 | GASKET |
| 63 | 2 | M4 X 20 | SCREW, FLAT HD |
| 62 | 1 | 10100 | BLOCK, ADAPTER |
| 61 | 1 | 10333 | GASKET |

INTERFACE DEVICES, INC.
230 DEPOT ROAD
MILFORD, CT 06460

| | |
|---------------|---|
| SCALE: 2X | TITLE: PUMP ASSEMBLY. TASQ SERIES, (INTEGRATED AIR REGULATOR) |
| DWN BY: WNI | REF: 20:1 THRU 60:1 RATIO |
| DATE: 8/11/04 | DWG NO: P09-1002 |
| SHT:2 OF:2 | REV: A |