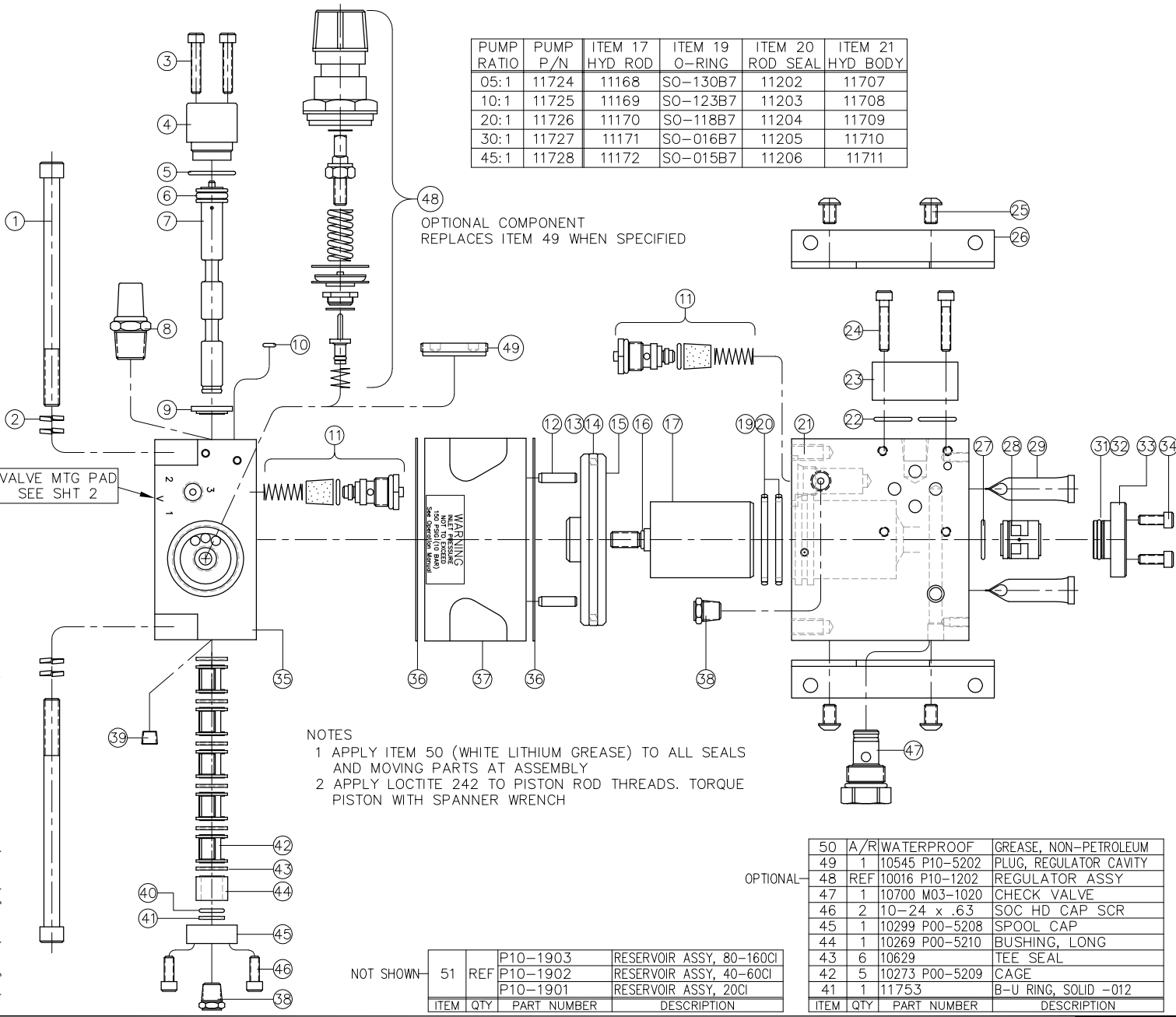


Z:\Programs\_Accaddwgs\TAS02\F09-1004--B.DWG Plotted: Jul 24, 2007 10:54AM



PUMP RATIO	PUMP P/N	ITEM 17 HYD ROD	ITEM 19 O-RING	ITEM 20 ROD SEAL	ITEM 21 HYD BODY
05:1	11724	11168	SO-130B7	11202	11707
10:1	11725	11169	SO-123B7	11203	11708
20:1	11726	11170	SO-118B7	11204	11709
30:1	11727	11171	SO-016B7	11205	11710
45:1	11728	11172	SO-015B7	11206	11711

48  
OPTIONAL COMPONENT  
REPLACES ITEM 49 WHEN SPECIFIED

NOTES  
1 APPLY ITEM 50 (WHITE LITHIUM GREASE) TO ALL SEALS AND MOVING PARTS AT ASSEMBLY  
2 APPLY LOCTITE 242 TO PISTON ROD THREADS. TORQUE PISTON WITH SPANNER WRENCH

NOT SHOWN

ITEM	QTY	PART NUMBER	DESCRIPTION
51	REF	P10-1903	RESERVOIR ASSY, 80-160CI
		P10-1902	RESERVOIR ASSY, 40-60CI
		P10-1901	RESERVOIR ASSY, 20CI

OPTIONAL

ITEM	QTY	PART NUMBER	DESCRIPTION
50	A/R	WATERPROOF GREASE, NON-PETROLEUM	
49	1	10545 P10-5202	PLUG, REGULATOR CAVITY
48	REF	10016 P10-1202	REGULATOR ASSY
47	1	10700 M03-1020	CHECK VALVE
46	2	10-24 x .63	SOC HD CAP SCR
45	1	10299 P00-5208	SPOOL CAP
44	1	10269 P00-5210	BUSHING, LONG
43	6	10629	TEE SEAL
42	5	10273 P00-5209	CAGE
41	1	11753	B-U RING, SOLID -012

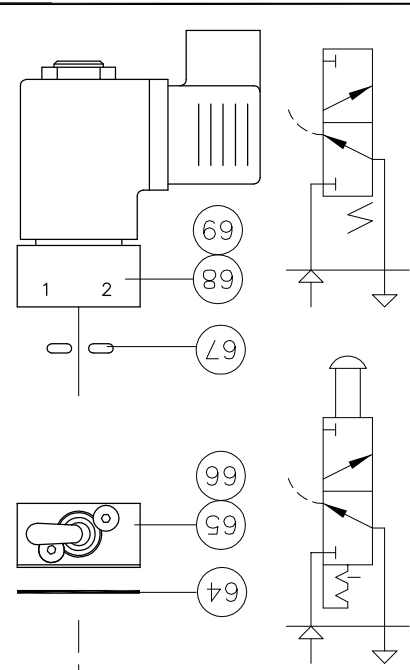
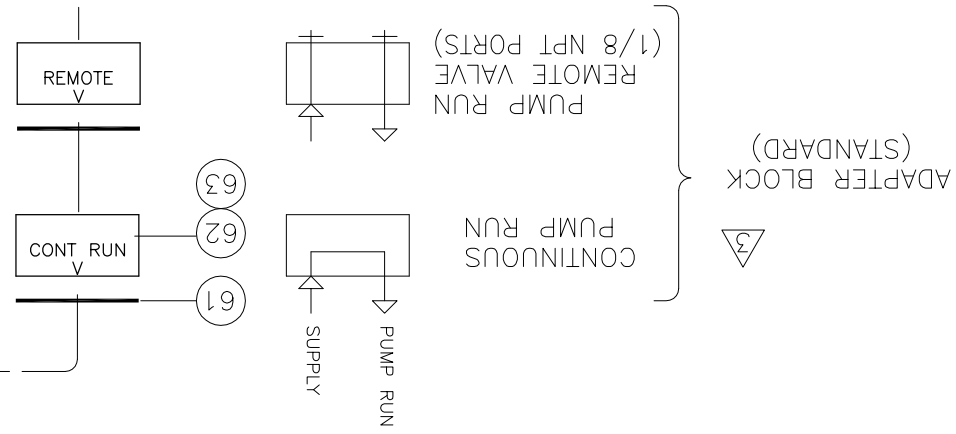
REV	DESCRIPTION	BY	DATE
A	ADDED ID PN ITEMS 2,12,32,39,41; DEL ITEM 30; ITEM 27 NOW (REF)	WNI	2/26/07
B	DEL ITEM 18; ITEM 19 & 20 NOW QTY 2	WNI	7/18/07

40	1	SO-012P9	O-RING
39	2	11769	PIPE PLUG, 1/8 NPT
38	2	10264	BREATHER, 1/8 NPT
37	1	10112 P10-5203	AIR BODY
36	2	10334 P00-5205	GASKET, AIR BODY
35	1	10006 P10-5201	AIR CAP
34	4	10-24 x .50	SOC HD CAP SCR
33	1	11137 P00-5607	RETAINER, CHECK VALVE
32	1	11757	B-UP RING, SPLIT -016
31	1	SO-016B7	O-RING
30			
29	2	11731 M03-1035	FILTER, SCREEN
28	1	11138	CHECK VALVE, -08
27	REF	16mm x 1.5mm	O-RING
26	2	10262 P00-5801	MOUNTING BRACKET
25	4	1/4-20 x .38	BUT HD CAP SCR
24	REF	10-24 x 1.00	SOC HD CAP SCR
23	REF	11200 M50-0003	DO3 XOVER PLATE
22	REF	SO-016B7	O-RING
21	1	SEE CHART	HYDRAULIC BODY
20	2	SEE CHART	ROD SEAL
19	2	SEE CHART	O-RING
18			
17	1	SEE CHART	HYDRAULIC ROD
16	1	SO-902B7	O-RING
15	1	11167 P09-5201	AIR PISTON
14	1	10377	GLYD RING
13	1	SO-233B7	O-RING
12	2	11772	DOWEL PIN, ø3/16 x 5/8
11	2	10017 V04-1005	2-WAY AIR VLV ASSY
10	1	SO-006B7	O-RING
9	1	10271 P00-5212	SPACER, SHORT
8	1	10431	MUFFLER, 3/8 NPT
7	1	10659 P00-5211	SPOOL, AIR
6	1	SO-111CN7	O-RING
5	1	SO-019B7	O-RING
4	1	10298 P00-5207	PILOT CAP
3	2	10-24 x 1.00	SOC HD CAP SCR
2	8	10393	HI COLLAR L'NUT, 5/16
1	4	5/16-18 x 4.00	SOC HD CAP SCR

INTERFACE DEVICES, INC.  
230 DEPOT ROAD  
MILFORD, CT 06460

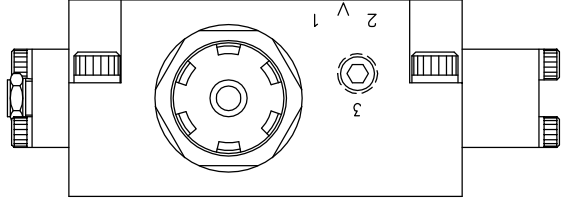
SCALE: 1/2	TITLE: PUMP ASSEMBLY. TASQ II SERIES, (INTEGRATED AIR REGULATOR)
DWN BY: WNI	REF: 5:1 THRU 45:1 RATIO
DATE: 10/10/06	DWG NO: P09-1004
SHT: 1 OF: 2	REV: B

- NOTES**
- 1 PORT 3 IS COMMON TO PORT 2.
  - CONNECT PORT 3 TO REMOTE AIR PILOT OPERATED HYDRAULIC RELEASE VALVE
  - 2 MOUNTING SCREWS AND GASKET/O-RINGS ARE FURNISHED FOR EACH OPTION
  - 3 ROTATE ADAPTER BLOCK TO MATCH "V" STAMPED ON AIR CAP FOR THE DESIRED FUNCTION



OPTION — 64  
OPTION — 65  
OPTION — 66  
STD — 67

REV	DESCRIPTION	BY	DATE
A	ITEMS 61-69 NOW (REF)	WNI	2/26/07
B	DEL ITEM 18; ITEM 19 & 20 NOW QTY 2	WNI	7/18/07



VOLTAGE	ITEM 38 P/N
110 VAC	10727
24 VDC	10728

ITEM	QTY	PART NUMBER	DESCRIPTION
70			
REF		M4 x 20	SCREW, FLAT HEAD
REF		SEE CHART	SOL AIR VALVE
REF		S0-006B7	O-RING
REF		M4 x 20	SCREW, FLAT HEAD
REF		10449	MAN TOGGLE SWITCH
REF		10333	GASKET
REF		M4 X 20	SCREW, FLAT HD
REF		10100	BLOCK, ADAPTER
REF		10333	GASKET

INTERFACE DEVICES, INC. 230 DEPOT ROAD MILFORD, CT 06460		TITLE: PUMP ASSEMBLY. TASQ SERIES, (INTEGRATED AIR REGULATOR)	DWN BY: WNI DATE: 10/10/06 REF: 5:1 THRU 45:1 RATIO	SHT: 2 OF: 2 DWG NO: P09-1004	REV: B
--	--	---	---	----------------------------------	--------