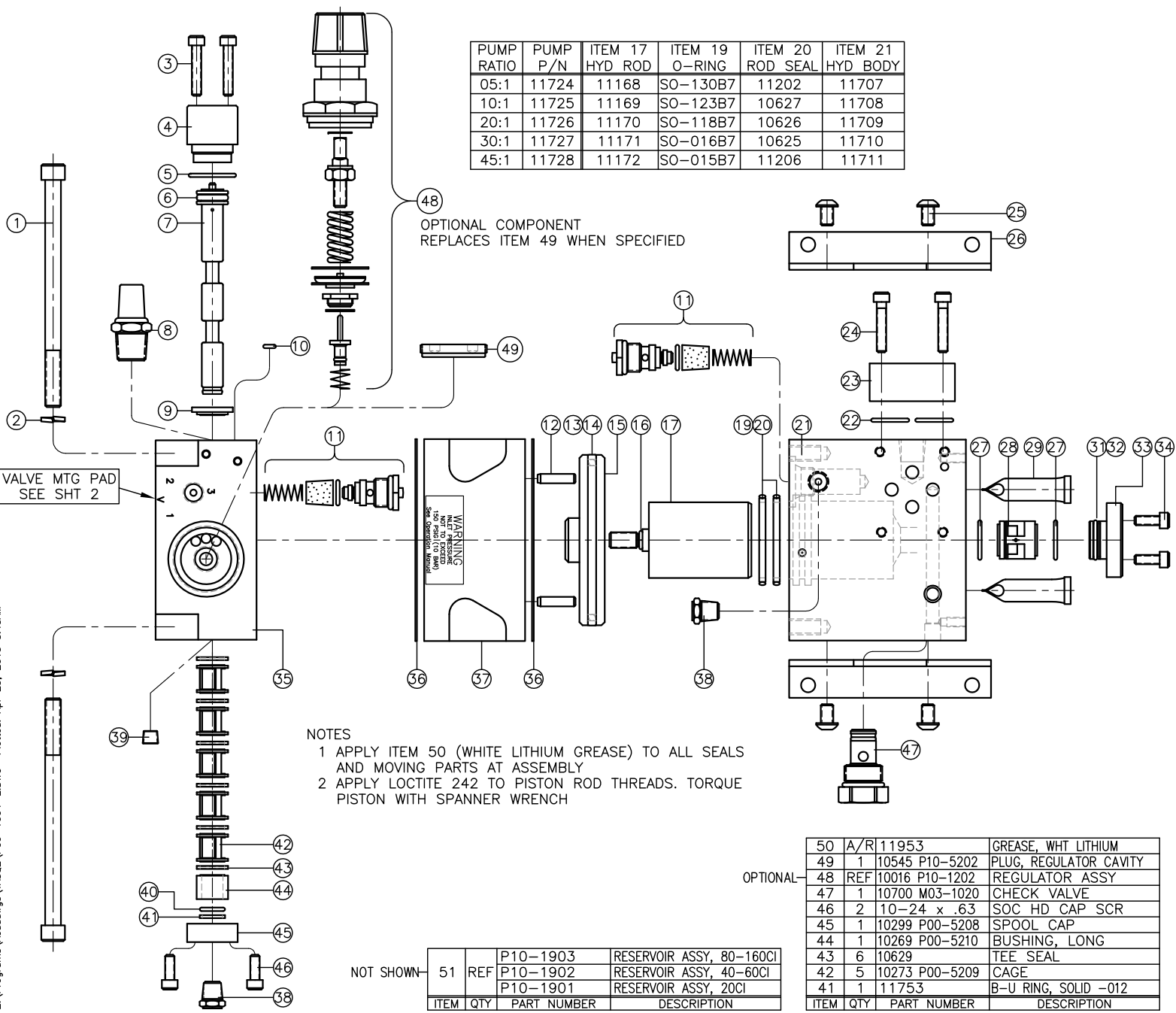


Z:\Programs\Acaddwg\TASQ2\PO9-1004-EDWG Plotted: Apr 25, 2013 8:43AM



PUMP RATIO	PUMP P/N	ITEM 17 HYD ROD	ITEM 19 O-RING	ITEM 20 ROD SEAL	ITEM 21 HYD BODY
05:1	11724	11168	SO-130B7	11202	11707
10:1	11725	11169	SO-123B7	10627	11708
20:1	11726	11170	SO-118B7	10626	11709
30:1	11727	11171	SO-016B7	10625	11710
45:1	11728	11172	SO-015B7	11206	11711

OPTIONAL COMPONENT REPLACES ITEM 49 WHEN SPECIFIED

WARNING
DO NOT EXCEED
MAXIMUM OPERATING PRESSURE
SPECIFIED ON LABEL

- NOTES
- 1 APPLY ITEM 50 (WHITE LITHIUM GREASE) TO ALL SEALS AND MOVING PARTS AT ASSEMBLY
 - 2 APPLY LOCTITE 242 TO PISTON ROD THREADS. TORQUE PISTON WITH SPANNER WRENCH

NOT SHOWN

ITEM	QTY	PART NUMBER	DESCRIPTION
51	REF	P10-1903	RESERVOIR ASSY, 80-160CI
		P10-1902	RESERVOIR ASSY, 40-60CI
		P10-1901	RESERVOIR ASSY, 20CI

OPTIONAL

ITEM	QTY	PART NUMBER	DESCRIPTION
50	A/R	11953	GREASE, WHT LITHIUM
49	1	10545 P10-5202	PLUG, REGULATOR CAVITY
48	REF	10016 P10-1202	REGULATOR ASSY
47	1	10700 M03-1020	CHECK VALVE
46	2	10-24 x .63	SOC HD CAP SCR
45	1	10299 P00-5208	SPOOL CAP
44	1	10269 P00-5210	BUSHING, LONG
43	6	10629	TEE SEAL
42	5	10273 P00-5209	CAGE
41	1	11753	B-U RING, SOLID -012

REV	DESCRIPTION	BY	DATE
A	ADDED ID PN ITEMS 2,12,32,39,41; DEL ITEM 30; ITEM 27 NOW (REF)	WNI	2/26/07
B	DEL ITEM 18; ITEM 19 & 20 NOW QTY 2	WNI	7/18/07
C	PIC CHG ITEM 68; DEL 61,63,64,66,67,69	WNI	4/14/11
D	PIC CHG ITM 27; 34 WAS 0.50; 10627 WAS 11203; 10626 WAS 11204; ITM 1 WAS 5/16-18 X 4.00; ITM 2 QTY WAS 8	WNI	12/27/11
E	10625 WAS 11205	WNI	9/26/12

40	1	SO-012P9	O-RING
39	2	11769	PIPE PLUG, 1/8 NPT
38	2	10264	BREATHER, 1/8 NPT
37	1	10112 P10-5203	AIR BODY
36	2	10334 P00-5205	GASKET, AIR BODY
35	1	10006 P10-5201	AIR CAP
34	4	10-24 x .62	SOC HD CAP SCR
33	1	11137 P00-5607	RETAINER, CHECK VALVE
32	1	11757	B-UP RING, SPLIT -016
31	1	SO-016B7	O-RING
30			
29	2	11731 M03-1035	FILTER, SCREEN
28	1	11138	CHECK VALVE, -08
27	REF	16mm x 1.5mm	O-RING
26	2	10262 P00-5801	MOUNTING BRACKET
25	4	1/4-20 x .38	BUT HD CAP SCR
24	REF	10-24 x 1.00	SOC HD CAP SCR
23	REF	11200 M50-0003	DO3 XOVER PLATE
22	REF	SO-017B7	O-RING
21	1	SEE CHART	HYDRAULIC BODY
20	2	SEE CHART	ROD SEAL
19	2	SEE CHART	O-RING
18			
17	1	SEE CHART	HYDRAULIC ROD
16	1	SO-902B7	O-RING
15	1	11167 P09-5201	AIR PISTON
14	1	10377	GLYD RING
13	1	SO-233B7	O-RING
12	2	11772	DOWEL PIN, Ø3/16 x 5/8
11	2	10017 V04-1005	2-WAY AIR VLV ASSY
10	1	SO-006B7	O-RING
9	1	10271 P00-5212	SPACER, SHORT
8	1	10431	MUFFLER, 3/8 NPT
7	1	10659 P00-5211	SPOOL, AIR
6	1	SO-111B7	O-RING
5	1	SO-019B7	O-RING
4	1	10298 P00-5207	PILOT CAP
3	2	10-24 x 1.00	SOC HD CAP SCR
2	4	10393	HI COLLAR L'NUT, 5/16
1	4	5/16-18 x 3.75	SOC HD CAP SCR

ITEM	QTY	PART NUMBER	DESCRIPTION
			INTERFACE DEVICES, INC. 230 DEPOT ROAD MILFORD, CT 06460

SCALE: 1/2 TITLE: PUMP ASSEMBLY, TASQ II SERIES

DWN BY: WNI

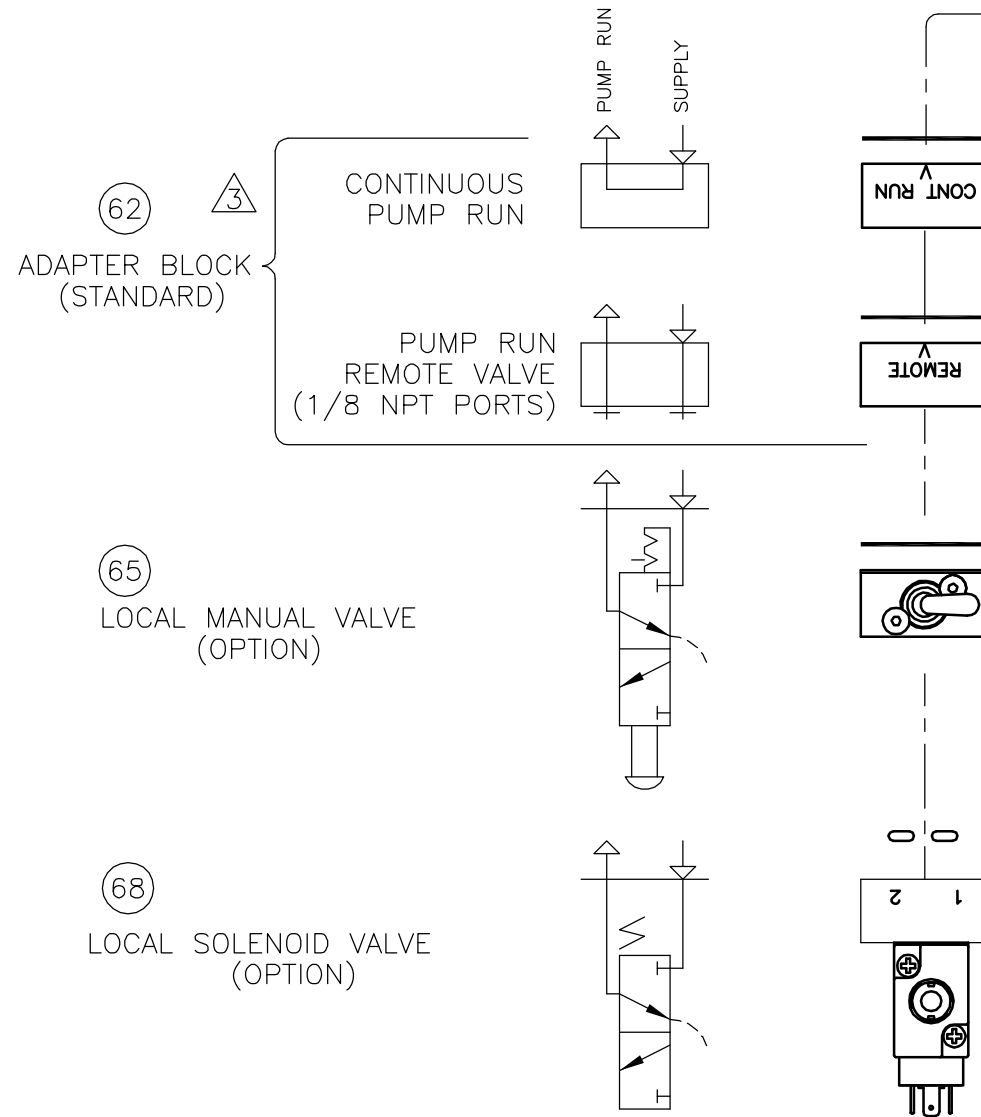
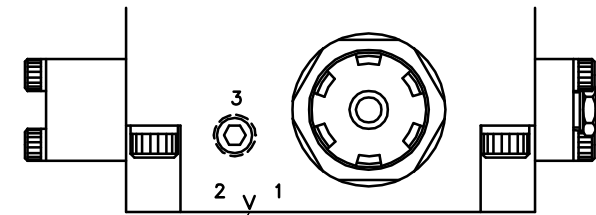
DATE: 10/10/06 REF: 5:1 THRU 45:1 RATIO

SHT: 1 OF: 2 DWG NO: P09-1004 REV: E

REV	DESCRIPTION	BY	DATE
E	10625 WAS 11205	WNI	9/26/12

NOTES

- 1 PORT 3 IS COMMON TO PORT 2.
CONNECT PORT 3 TO REMOTE AIR PILOT OPERATED
HYDRAULIC RELEASE VALVE
- 2 MOUNTING SCREWS AND GASKET/O-RINGS ARE
FURNISHED FOR EACH OPTION
- 3 ROTATE ADAPTER BLOCK TO MATCH "V" STAMPED ON AIR CAP
FOR THE DESIRED FUNCTION



VOLTAGE	ITEM 57 P/N
24 VDC	11837 V04-1003
120 VAC	11838 V04-1003
240 VAC	11919 V04-1003

62 ADAPTER BLOCK (STANDARD)

65 LOCAL MANUAL VALVE (OPTION)

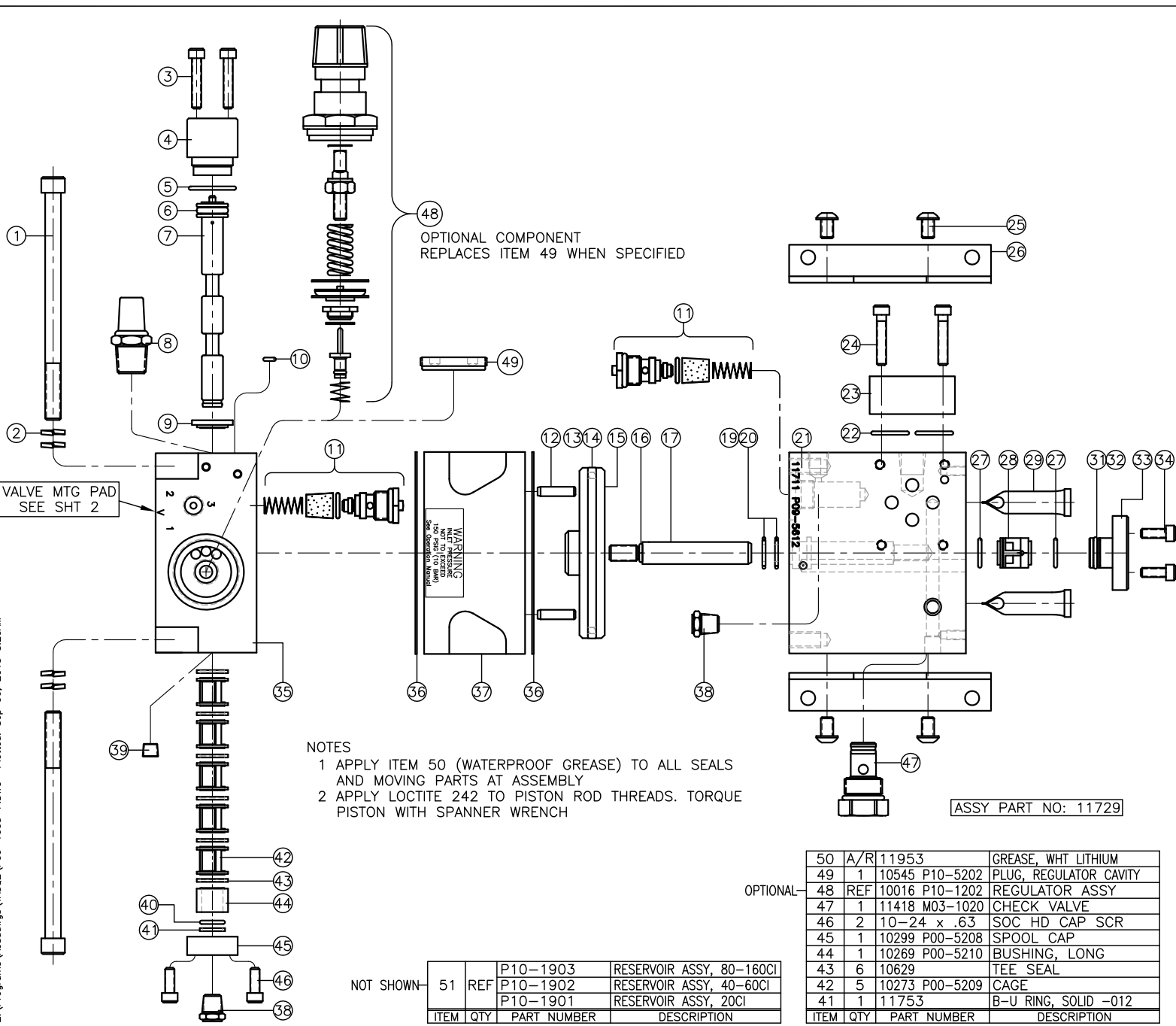
68 LOCAL SOLENOID VALVE (OPTION)

- OPTION — 68 REF SEE CHART SOL AIR VALVE ASSY
- OPTION — 67
- OPTION — 66
- OPTION — 65 REF 10449 V04-1002 MAN TOGGLE SWITCH ASSY
- OPTION — 64
- OPTION — 63
- STD — 62 REF 11235 P00-1206 BLOCK ASSY, ADAPTER
- STD — 61

ITEM	QTY	PART NUMBER	DESCRIPTION
70			
69			
68	REF	SEE CHART	SOL AIR VALVE ASSY
67			
66			
65	REF	10449 V04-1002	MAN TOGGLE SWITCH ASSY
64			
63			
62	REF	11235 P00-1206	BLOCK ASSY, ADAPTER
61			

 INTERFACE DEVICES, INC. 230 DEPOT ROAD MILFORD, CT 06460			
SCALE: 1/2	TITLE: PUMP ASSEMBLY. TASQ SERIES, (INTEGRATED AIR REGULATOR)		
DWN BY: WNI	REF: 5:1 THRU 45:1 RATIO		
DATE: 10/10/06	DWG NO: P09-1004		REV: E

Z:\Programs\Acaddwggs\TASQ2\PO9-1005-F.DWG Plotted: Sep 06, 2013 8:20AM



NOTES
 1 APPLY ITEM 50 (WATERPROOF GREASE) TO ALL SEALS AND MOVING PARTS AT ASSEMBLY
 2 APPLY LOCTITE 242 TO PISTON ROD THREADS. TORQUE PISTON WITH SPANNER WRENCH

NOT SHOWN

ITEM	QTY	PART NUMBER	DESCRIPTION
51	REF	P10-1903	RESERVOIR ASSY, 80-160CI
		P10-1902	RESERVOIR ASSY, 40-60CI
		P10-1901	RESERVOIR ASSY, 20CI

OPTIONAL

ITEM	QTY	PART NUMBER	DESCRIPTION
50	A/R	11953	GREASE, WHT LITHIUM
49	1	10545 P10-5202	PLUG, REGULATOR CAVITY
48	REF	10016 P10-1202	REGULATOR ASSY
47	1	11418 M03-1020	CHECK VALVE
46	2	10-24 x .63	SOC HD CAP SCR
45	1	10299 P00-5208	SPOOL CAP
44	1	10269 P00-5210	BUSHING, LONG
43	6	10629	TEE SEAL
42	5	10273 P00-5209	CAGE
41	1	11753	B-U RING, SOLID -012

ASSY PART NO: 11729

REV	DESCRIPTION	BY	DATE
A	REDESIGNED FOR "P" STYLE HYDRAULIC BODY	WNI	9/27/06
B	ADDED ID PN ITEMS 2,12,32,39,41; DEL ITEM 30; ITEM 27 NOW (REF)	WNI	2/26/07
C	DEL ITEM 18; ITEM 19 & 20 NOW QTY 2	WNI	7/18/07
D	ITEM 47 WAS 10700	WNI	8/31/09
E	PIC CHG ITEM 68; DEL 61,63,64,66,67,69	WNI	4/14/11
F	PIC CHG 27; 31 WAS SO-015; 34 WAS 0.50	WNI	12/27/11

40	1	SO-012P9	O-RING
39	2	11769	PIPE PLUG, 1/8 NPT
38	2	10264	BREATHER, 1/8 NPT
37	1	10112 P10-5203	AIR BODY
36	2	10334 P00-5205	GASKET, AIR BODY
35	1	10006 P10-5201	AIR CAP
34	4	10-24 x .62	SOC HD CAP SCR
33	1	11713 P00-5608	RETAINER, CHECK VALVE
32	1	12723	B-UP RING, SPLIT -013
31	1	SO-013B7	O-RING
30			
29	2	10328 M03-1001	FILTER
28	1	11201	CHECK VALVE, -6
27	REF	12mm x 1.5mm	O-RING
26	2	10262 P00-5801	MOUNTING BRACKET
25	4	1/4-20 x .38	BUT HD CAP SCR
24	REF	10-24 x 1.00	SOC HD CAP SCR
23	REF	11200 M50-0003	DO3 XOVER PLATE
22	REF	SO-017B7	O-RING
21	1	11711 P09-5613	HYDRAULIC BODY
20	2	11207	ROD SEAL
19	2	SO-014B7	O-RING
18			
17	1	11173 P09-5506	HYDRAULIC ROD
16	1	SO-902B7	O-RING
15	1	11167 P09-5201	AIR PISTON
14	1	10377	GLYD RING
13	1	SO-233B7	O-RING
12	2	11772	DOWEL PIN, ø3/16 x 5/8
11	2	10017 V04-1005	2-WAY AIR VLV ASSY
10	1	SO-006B7	O-RING
9	1	10271 P00-5212	SPACER, SHORT
8	1	10431	MUFFLER, 3/8 NPT
7	1	10659 P00-5211	SPOOL, AIR
6	1	SO-111B7	O-RING
5	1	SO-019B7	O-RING
4	1	10298 P00-5207	PILOT CAP
3	2	10-24 x 1.00	SOC HD CAP SCR
2	8	10393	HI COLLAR L'NUT, 5/16
1	4	5/16-18 x 4.00	SOC HD CAP SCR

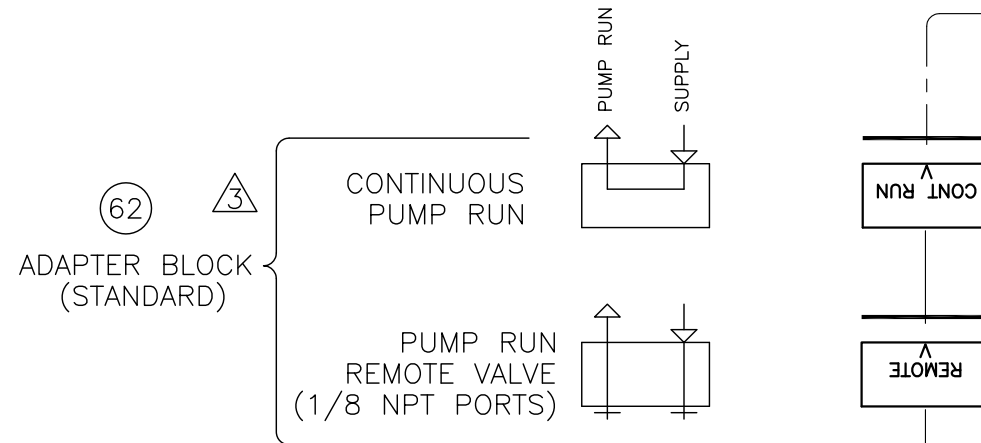
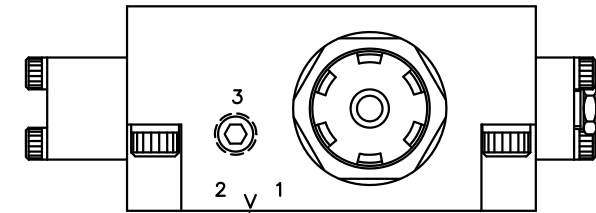
ITEM	QTY	PART NUMBER	DESCRIPTION
			INTERFACE DEVICES, INC. 230 DEPOT ROAD MILFORD, CT 06460

SCALE: 1/2 TITLE: PUMP ASSEMBLY, TASQ II SERIES
 DWN BY: WNI REF: 60:1 RATIO
 DATE: 10/10/06
 SH1 OF: 2 DWG NO: P09-1005 REV: F

REV	DESCRIPTION	BY	DATE
E	PIC CHG ITEM 68; DEL 61,63,64,66,67,69	WNI	4/14/11
F	PIC CHG 27; 31 WAS SO-015; 34 WAS 0.50	WNI	12/27/11

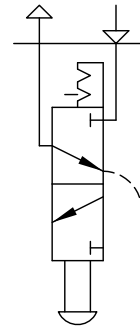
NOTES

- 1 PORT 3 IS COMMON TO PORT 2.
CONNECT PORT 3 TO REMOTE AIR PILOT OPERATED HYDRAULIC RELEASE VALVE
- 2 MOUNTING SCREWS AND GASKET/O-RINGS ARE FURNISHED FOR EACH OPTION
- 3 ROTATE ADAPTER BLOCK TO MATCH "V" STAMPED ON AIR CAP FOR THE DESIRED FUNCTION

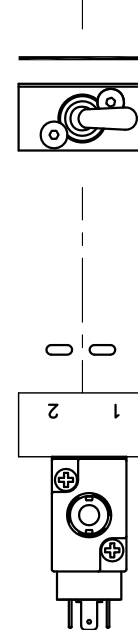
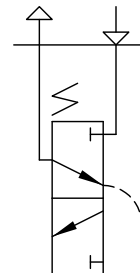


VOLTAGE	ITEM 57 P/N
24 VDC	11837 V04-1003
120 VAC	11838 V04-1003
240 VAC	11919 V04-1003

65 LOCAL MANUAL VALVE (OPTION)



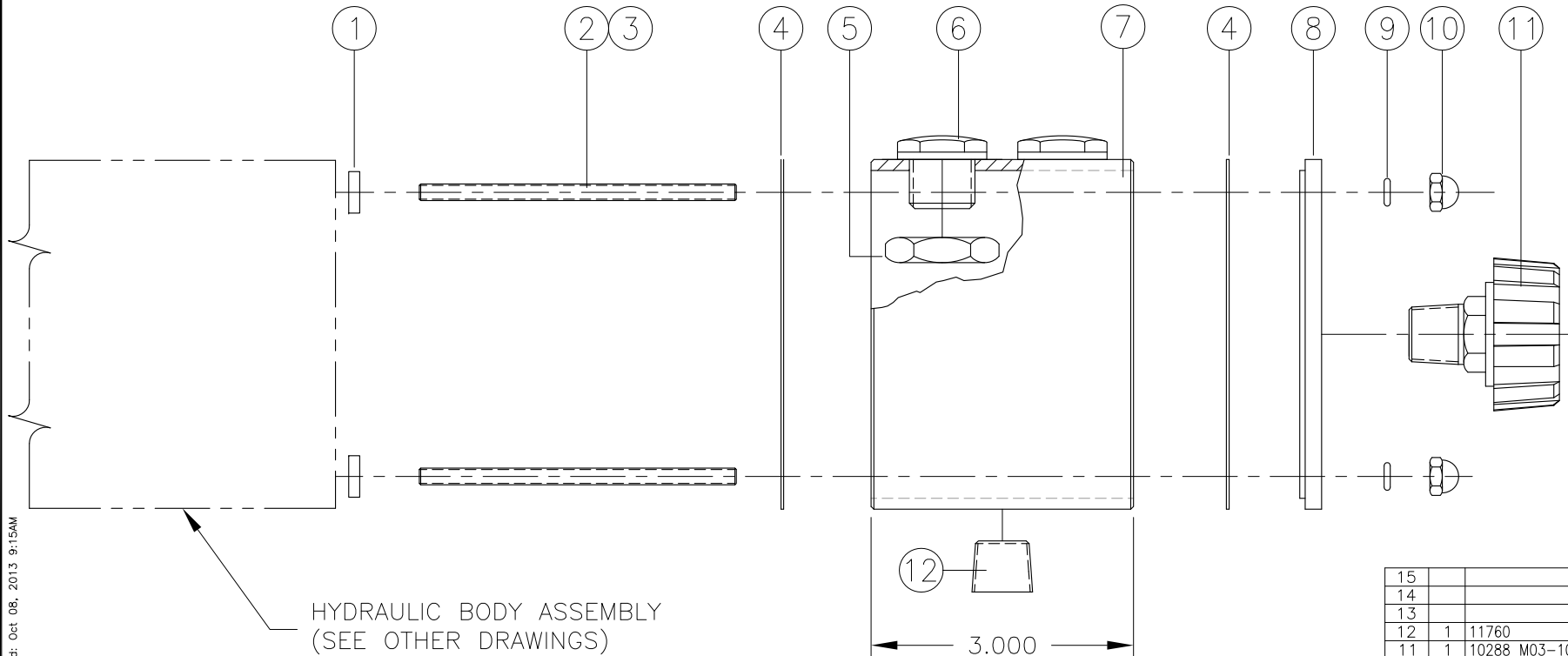
68 LOCAL SOLENOID VALVE (OPTION)



ITEM	QTY	PART NUMBER	DESCRIPTION
70			
69			
68	REF	SEE CHART	SOL AIR VALVE ASSY
67			
66			
65	REF	10449 V04-1002	MAN TOGGLE SWITCH ASSY
64			
63			
62	REF	11235 P00-1206	BLOCK ASSY, ADAPTER
61			

ITEM	QTY	PART NUMBER	DESCRIPTION
 INTERFACE DEVICES, INC. 230 DEPOT ROAD MILFORD, CT 06460			
SCALE: 1/2		TITLE: PUMP ASSEMBLY. TASQ II SERIES, (INTEGRATED AIR REGULATOR)	
DWN BY: WNI		REF: 60:1 RATIO	
DATE: 10/10/06		REF: 60:1 RATIO	
SHT: 2	OF: 2	DWG NO: P09-1005	REV: F

REV	DESCRIPTION	BY	DATE
A	ADDED ITM 12	WNI	5/31/12
B	MOVED 10855 TO P10-1903	WNI	10/8/13

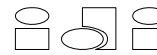


HYDRAULIC BODY ASSEMBLY
(SEE OTHER DRAWINGS)

12

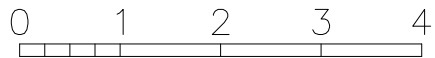
3.000

15			
14			
13			
12	1	11760	FTG, PLUG, 3/8 NPT
11	1	10288 M03-1036	BREATHER/FILLER CAP
10	4	10437	ACORN NUT, 10-24 NC
9	4	S0-008B7	O-RING
8	1	10304 P10-5903	COVER, RESERVOIR
7	1	10590	RESERVOIR
6	2	10363	SIGHT GAUGE, -08
5	2	11316 P10-5913	HEX JAM NUT, 3/4-16 NF
4	2	10338 P10-5905	GASKET, RESERVOIR
3	A/R	#242	LOCTITE
2	4	10675	STUD, 10-24 x 3.62
1	4	11304 P10-5912	ROUND JAM NUT, 10-24
ITEM	QTY	PART NUMBER	DESCRIPTION



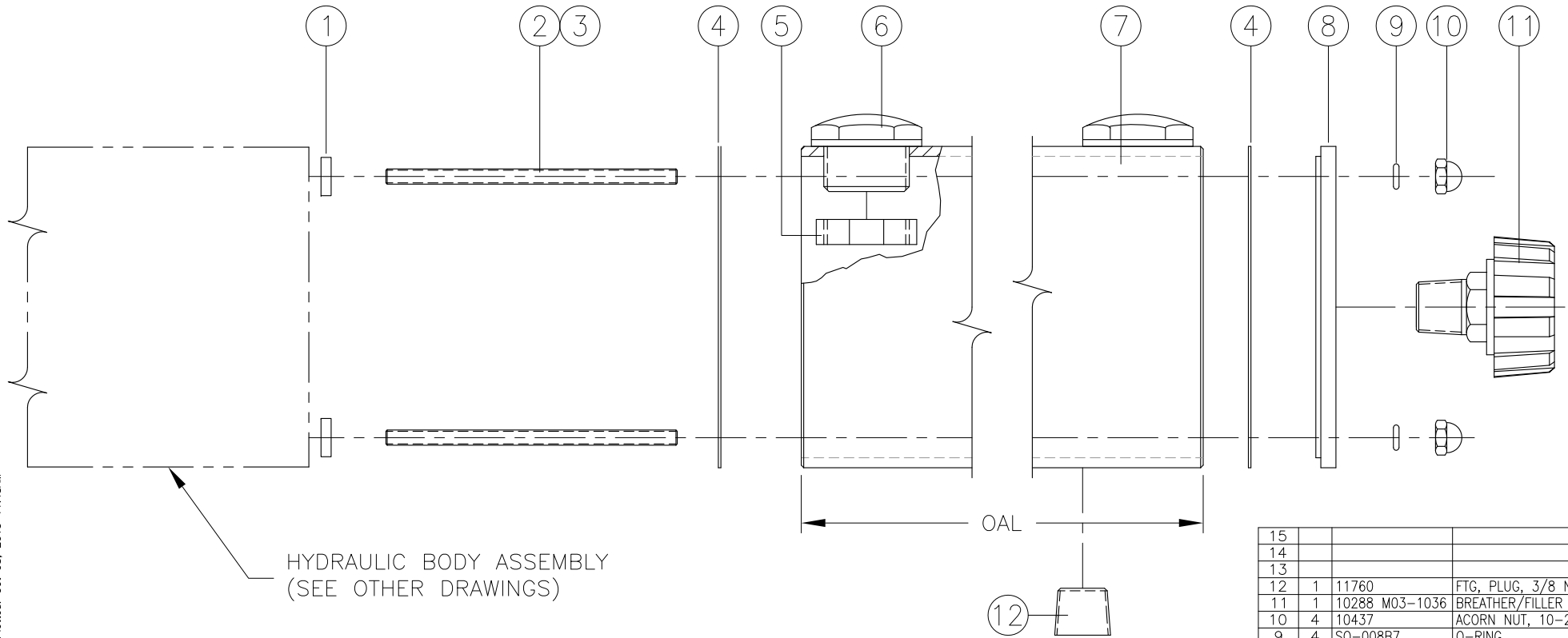
INTERFACE DEVICES, INC.
230 DEPOT ROAD
MILFORD, CT 06460

SCALE: N/A	TITLE: RESERVOIR ASSEMBLY, SELF CONTAINED, 40 CUBIC INCH
DWN BY: WNI	REF:
DATE: 12/10/02	REF:
SHT: 1 OF: 1	DWG NO: P10-1902
	REV: B



INCHES ON ORIGINAL DWG

REV	DESCRIPTION	BY	DATE
A	ADDED ITM 12	WNI	5/31/12
B	ADDED 10855 (60 CI)	WNI	10/8/13



HYDRAULIC BODY ASSEMBLY
(SEE OTHER DRAWINGS)

15			
14			
13			
12	1	11760	FTG, PLUG, 3/8 NPT
11	1	10288 M03-1036	BREATHER/FILLER CAP
10	4	10437	ACORN NUT, 10-24 NC
9	4	S0-008B7	O-RING
8	1	10304 P10-5903	COVER, RESERVOIR
7	1	SEE CHART	RESERVOIR
6	2	10364	SIGHT GAUGE, -12
5	2	10443 P10-5904	LOCKNUT, SIGHT GAUGE
4	2	10338 P10-5905	GASKET, RESERVOIR
3	A/R	#242	LOCTITE
2	4	SEE CHART	STUD
1	4	11304 P10-5912	ROUND JAM NUT, 10-24
ITEM	QTY	PART NUMBER	DESCRIPTION

ASSEMBLY PART NO	VOLUME (CU IN)	OAL	RESERVOIR PART NO	STUD PART NUMBER/SIZE (4) REQ'D	
10855	60	4.50	10592	10677	10-24 x 5.12
10856	80	5.75	10593	10944	10-24 x 6.38
10857	100	7.25	10595	10678	10-24 x 7.88
10858	120	8.75	10852	10679	10-24 x 9.38
10859	160	11.50	10596	10680	10-24 x 12.12
12448	215	15.50	12446	12447	10-24 x 16.12

		INTERFACE DEVICES, INC. 230 DEPOT ROAD MILFORD, CT 06460
SCALE: N/A	TITLE: RESERVOIR ASSEMBLY, SELF-CONTAINED, 60-215 CUBIC INCH	
DWN BY: WNI	DATE: 11/5/98 REF:	
SHT: 1 OF: 1	DWG NO: P10-1903	REV: B

Z:\Programs\Accaddwgs\IP-SERIES\RES\P10-1903-B.DWG Plotted: Oct 08, 2013 11:48AM

0 1 2 3 4
INCHES ON ORIGINAL DWG