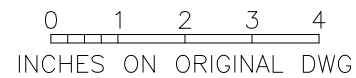
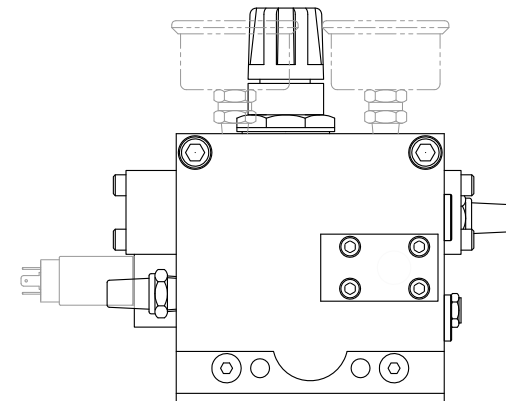
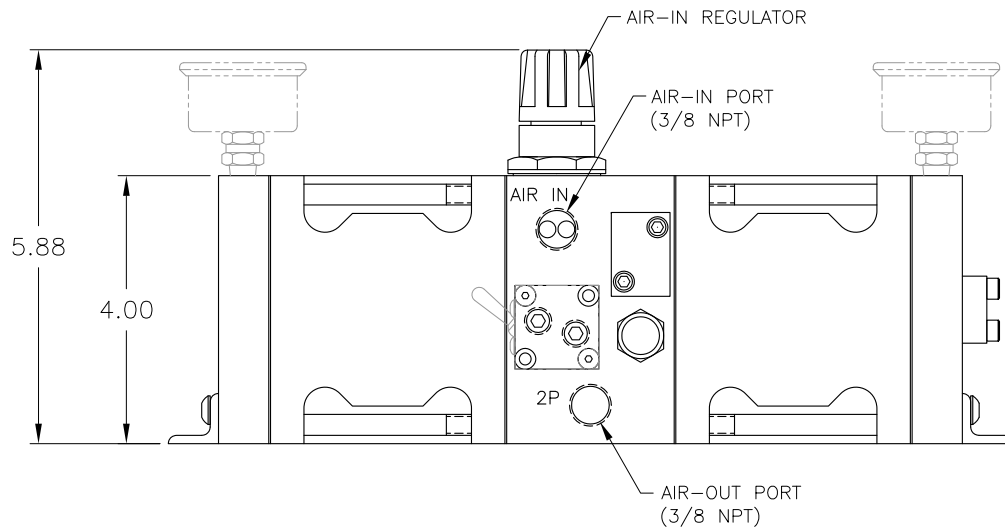
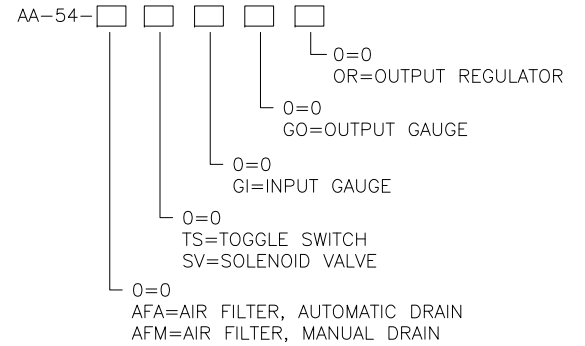
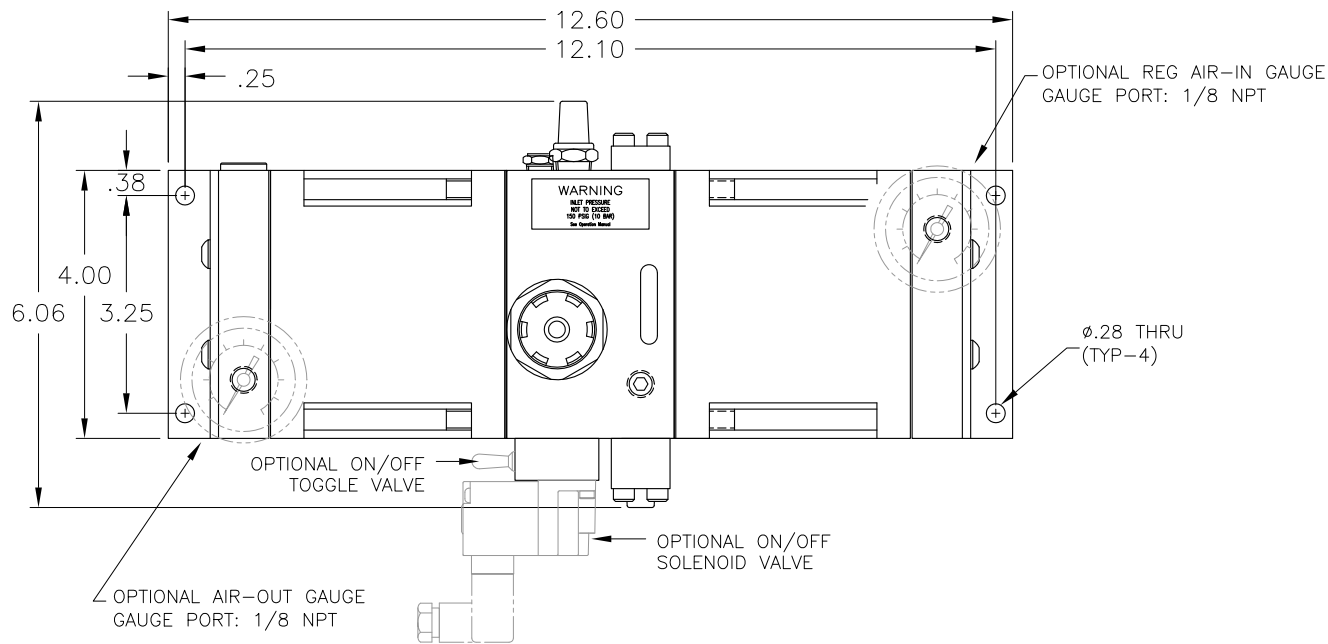
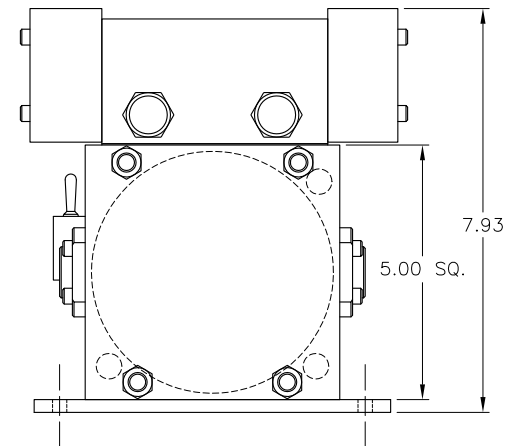
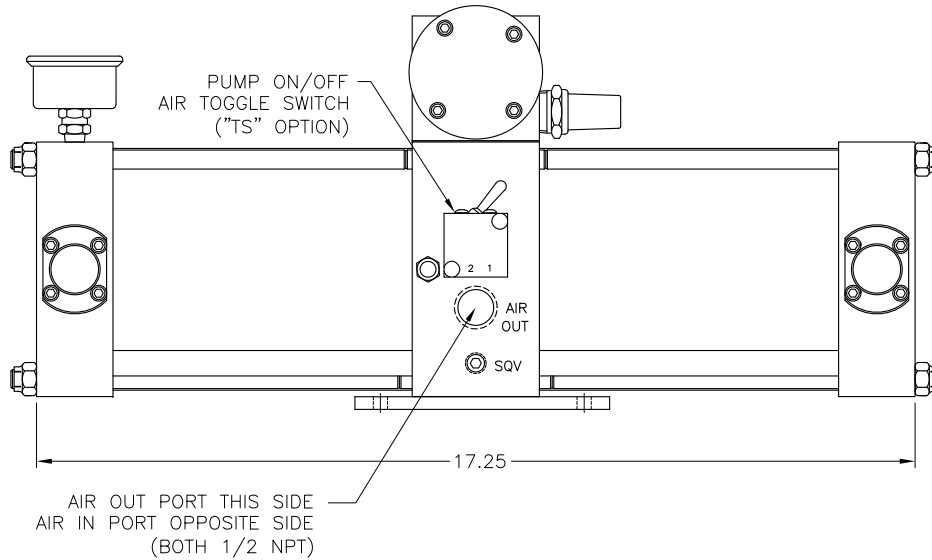
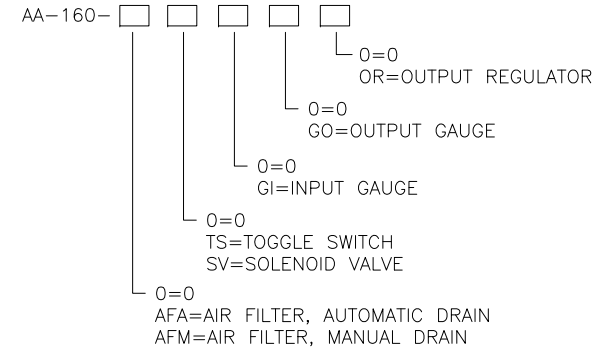
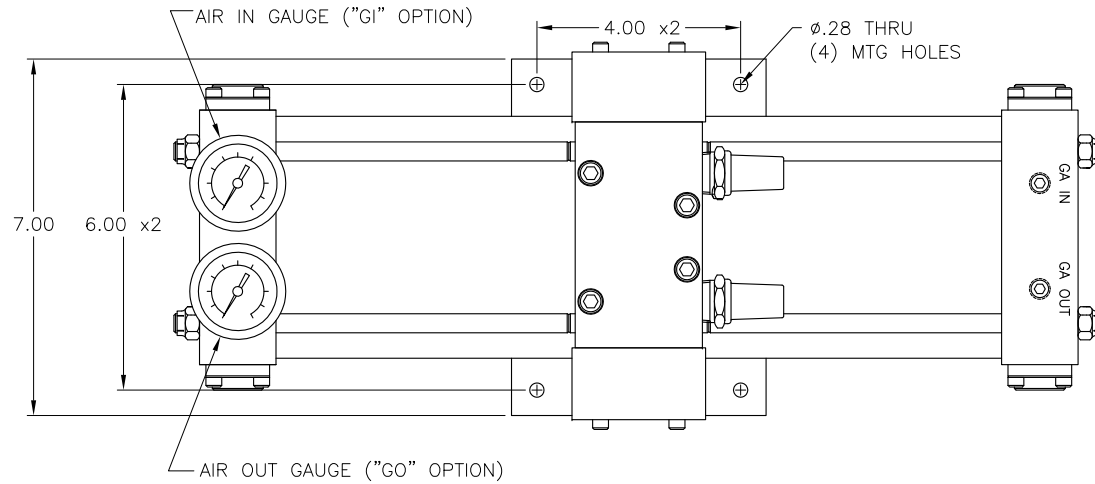


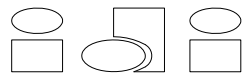
REV	DESCRIPTION	BY	DATE
A	DWG NO WAS GA9711051	WNI	12/11/02
B	IDENTIFIED GAUGE PORTS AND OPTIONAL COMPONENTS	WNI	11/18/04
C	PICTURE CHANGE (ADDED LUNGE VALVE)	WNI	1/28/05
D	ADDED COMMON OPTIONAL COMPONENTS	WNI	4/6/06
E	OPTIONAL GAUGES NOW 1/8 NPT	WNI	12/7/12



		INTERFACE DEVICES, INC. 230 DEPOT ROAD MILFORD, CT 06460
SCALE: HALF	TITLE: GENERAL ARRANGEMENT, AA-54 2:1 AIR AMPLIFIER	
DWN BY: WNI	DATE: 11/05/97 REF:	
SHT: 1 OF: 1	DWG NO: P30-0001	REV: E

REV	DESCRIPTION	BY	DATE
A	ADDED PUMP MODEL CODE	WNI	7/26/10
B	PICTURE CHANGE; 7.93 WAS 7.38	WNI	8/29/11



		INTERFACE DEVICES, INC. 230 DEPOT ROAD MILFORD, CT 06460	
SCALE: 1/4	TITLE: GENERAL ARRANGEMENT, AA-160 2:1 AIR AMPLIFIER		
DWN BY: TWH	REF:		
DATE: 11/15/04	REF:		
SHT: 1 OF: 1	DWG NO: P30-0002	REV: B	