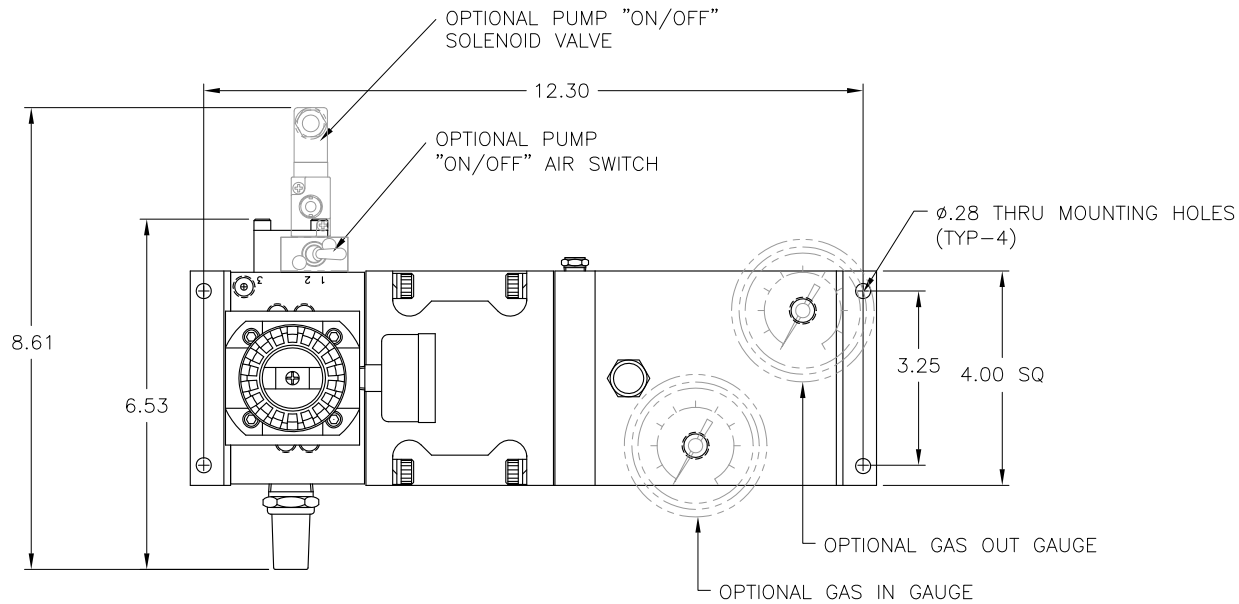


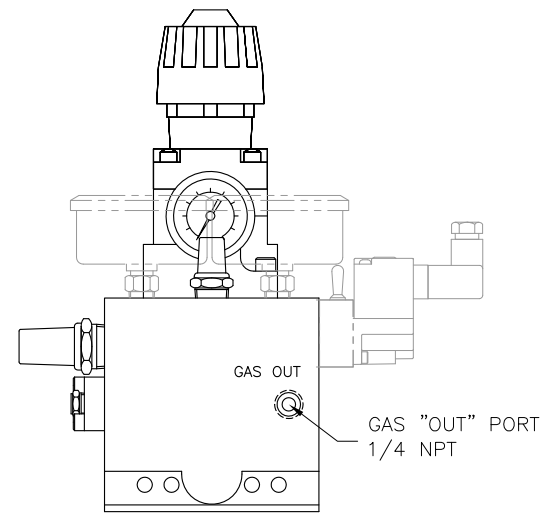
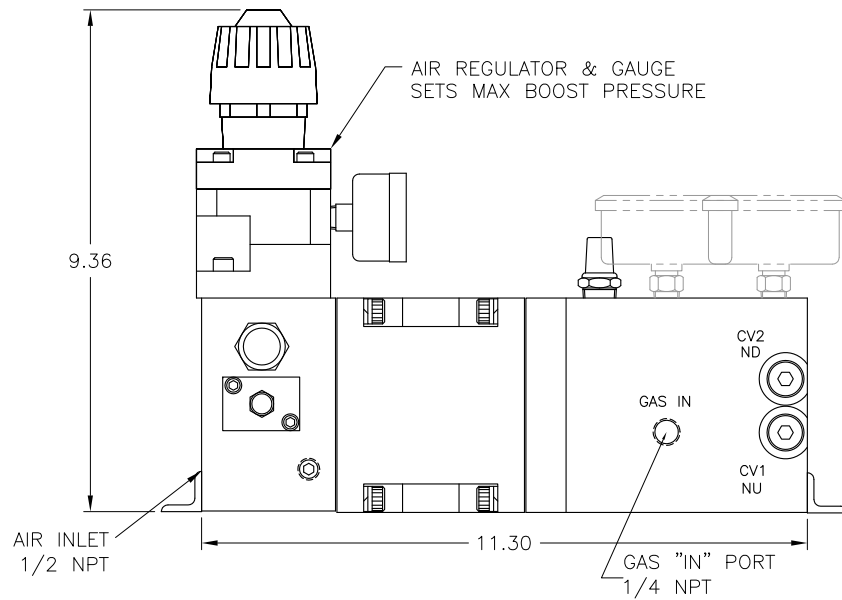
REV	DESCRIPTION	BY	DATE
A	MADE GENERIC DWG; ADDED "OPTIONAL" COMPONENTS	WNI	3/17/06
B	PICTURE CHANGE; REPOSITION AIR IN GAUGE	WNI	2/24/12
C	PICTURE CHANGE; REMOVE P/L	WNI	1/24/14



ENB00-0-0-0-0

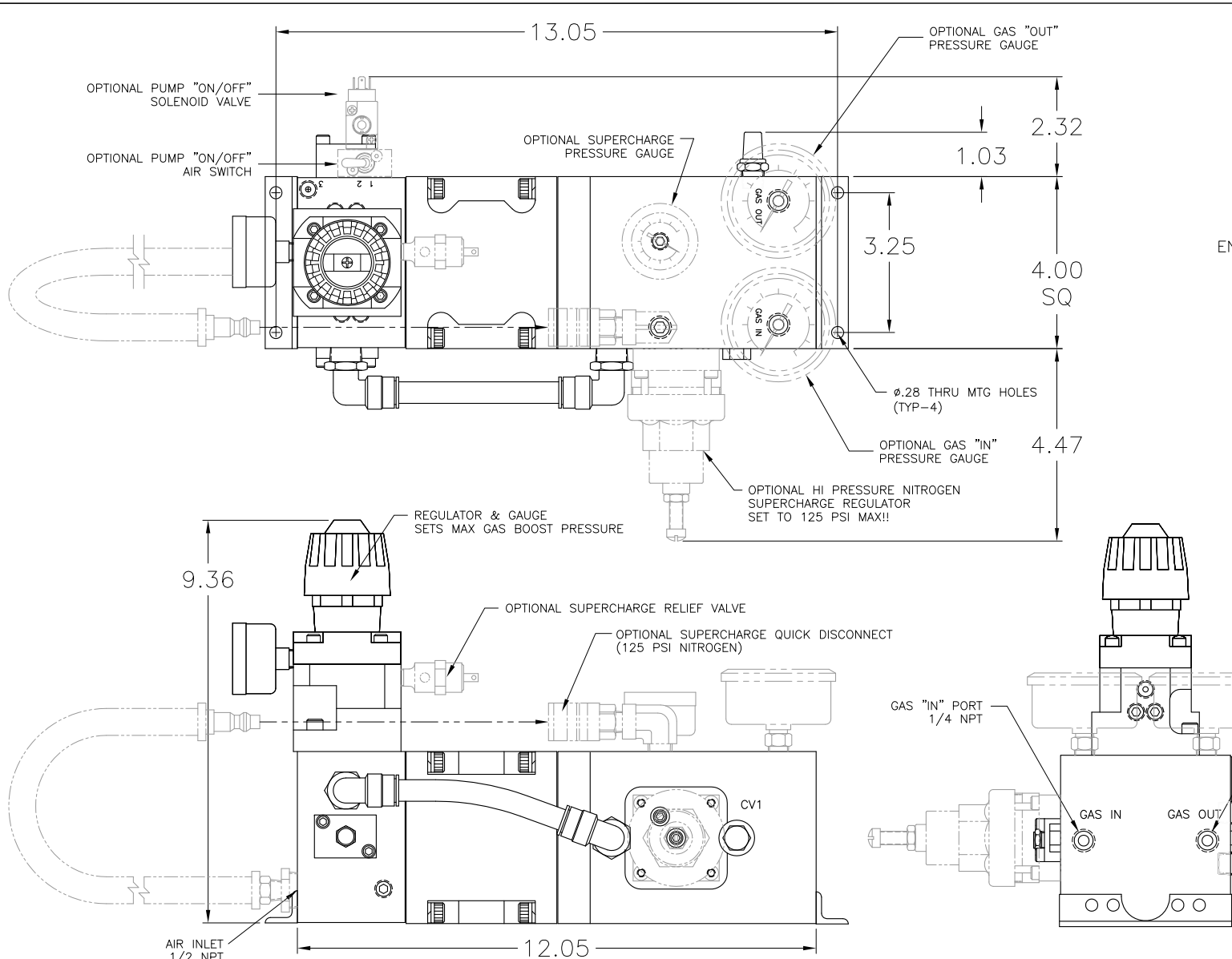
- 0= NO GAUGE
- GO=OUTLET GAUGE
- 0= NO GAUGE
- GI=INLET GAUGE
- 0= NO ON/OFF (CROSSOVER BLOCK)
- TS=ON/OFF TOGGLE VALVE
- SV=ON/OFF SOLENOID VALVE
- SQ=ON/OFF SEQUENCE VALVE
- 0= NO FILTER
- AFA=AIR FILTER, AUTO DRAIN
- AFM=AIR FILTER, MANUAL DRAIN
- PUMP RATIO: 04, 05, 10

NOTES:
1 OPTIONAL COMPONENTS ARE SHOWN IN PHANTOM



0 1 2 3 4
INCHES ON ORIGINAL DWG

		INTERFACE DEVICES, INC. 230 DEPOT ROAD MILFORD, CT 06460	
SCALE: NONE	TITLE: GENERAL ARRANGEMENT, GAS BOOSTER		
DWN BY: WNI	4:1, 5:1, & 10:1		
DATE: 1/11/06	REF:		
SHT: 1 OF: 1	DWG NO: P31-0002	REV: C	

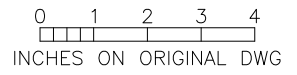


REV	DESCRIPTION	BY	DATE
A	ADDED AIR INLET RELIEF VALVE	WNI	1/10/03
B	DWG NO WAS GA9901181; PICTURE CHANGE MUFFLER: 5.46 WAS 6.40	WNI	3/25/03
C	MADE GENERIC DWG; ADDED OPTIONAL COMPONENTS	WNI	4/5/06

ENB00(R)-0-0-0-0

- 0= NO GAUGE
- GO=OUTLET GAUGE
- 0= NO GAUGE
- GI=INLET GAUGE
- 0= NO ON/OFF (CROSSOVER BLOCK)
- TS=ON/OFF TOGGLE VALVE
- SV=ON/OFF SOLENOID VALVE
- SQ=ON/OFF SEQUENCE VALVE
- 0= NO FILTER
- AFA=AIR FILTER, AUTO DRAIN
- AFM=AIR FILTER, MANUAL DRAIN
- BLANK= NO SUPERCHARGE REGULATOR
- R=SUPERCHARGE REGULATOR KIT

PUMP RATIO: 20, 30, 45



NOTES:

- OPTIONAL COMPONENTS ARE SHOWN IN PHANTOM
- TO RUN PUMP ON SHOP AIR, CONNECT QUICK DISCONNECT TO AIR SUPPLY
- TO RUN PUMP FROM NITROGEN CYLINDER, CONNECT QUICK DISCONNECT TO FEMALE DISCONNECT ON PUMP

		INTERFACE DEVICES, INC. 230 DEPOT ROAD MILFORD, CT 06460	
SCALE: NONE	TITLE: GENERAL ARRANGEMENT, GAS BOOSTER, 20:1, 30:1, 45:1		
DWN BY: WNI	DATE: 1/18/99 REF:		
SH: 1 OF: 1	DWG NO: P32-0002	REV: C	