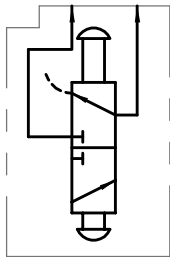
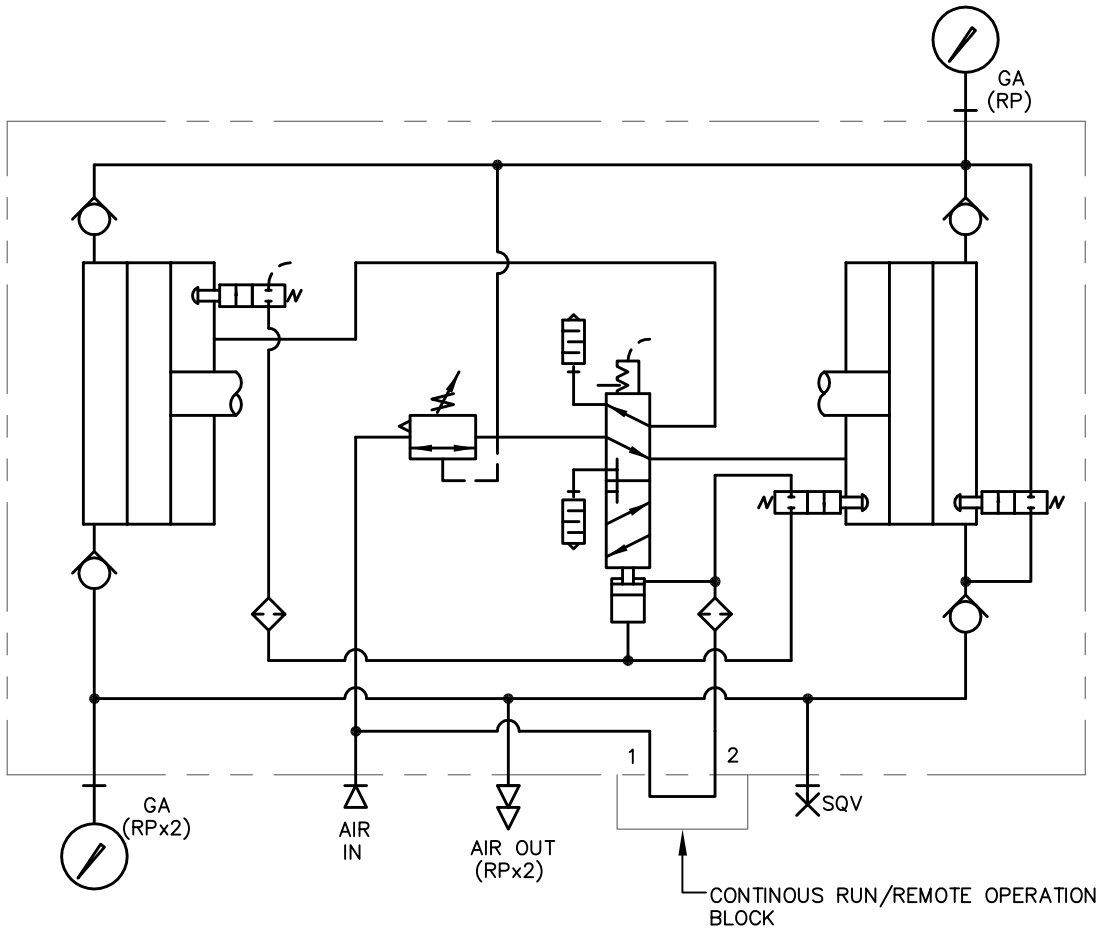
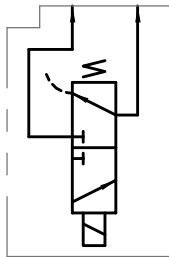


Z:\Programs\Acaddwgs\AIRAMP\2to1\P30-4001-C.DWG Plotted: Apr 12, 2006 8:10AM

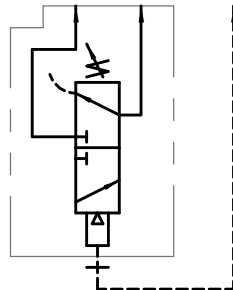
REV	DESCRIPTION	BY	DATE
A	DWG NO WAS GA-9711051	WNI	12/11/02
B	ADD LUNGE VALVE	WNI	2/21/04
C	ADD ON/OFF CONTROL OPTIONS	WNI	4/12/06



TOGGLE VALVE OPTION



SOLENOID VALVE OPTION



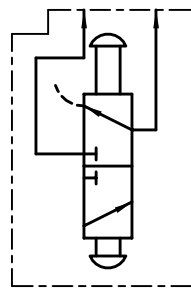
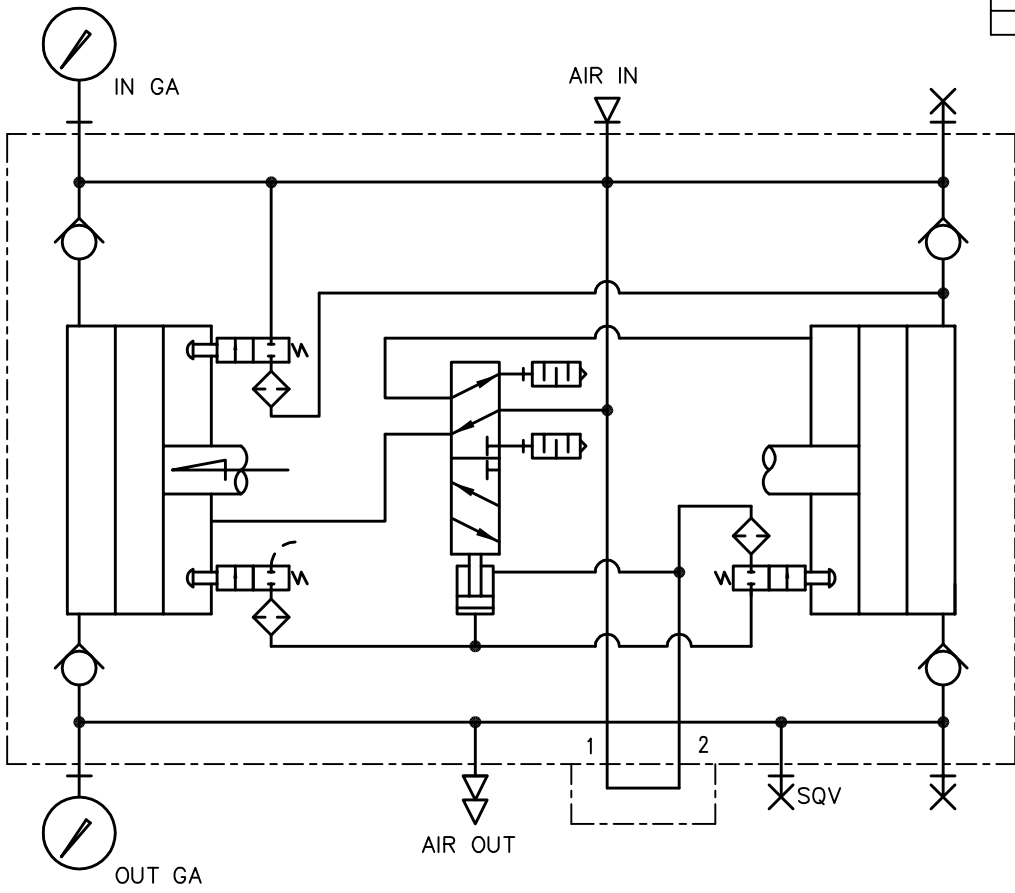
N.C. SEQUENCE VALVE OPTION

NOTES

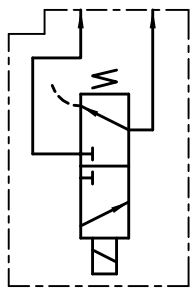
- 1 GAUGES SHOWN ARE OPTIONAL COMPONENTS
- 2 AIR IN AND OUT PORTS: 3/8 NPT
- GAUGE PORTS: 1/4 NPT
- SEQUENCE VALVE PILOT PORT: 1/8 NPT

		INTERFACE DEVICES, INC. 230 DEPOT ROAD MILFORD, CT 06460	
SCALE: N/A	TITLE: PNEUMATIC SCHEMATIC, AA-54 2:1 AIR AMPLIFIER		
DWN BY: TWH	REF:		
DATE: 11/14/95	DWG NO: P30-4001		REV: C
SHT: 1 OF: 1			

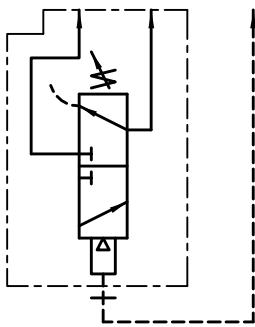
REV	DESCRIPTION	BY	DATE
-	-	-	-



TOGGLE
VALVE
OPTION



SOLENOID
VALVE
OPTION



SEQUENCE
VALVE
OPTION

		INTERFACE DEVICES, INC. 230 DEPOT ROAD MILFORD, CT 06460	
SCALE: N/A	TITLE: PNEUMATIC SCHEMATIC, AA-160 2:1 AIR AMPLIFIER		
DWN BY: TWH	REF: UNBAL AIR SPOOL		
DATE: 6/17/04	DWG NO: P30-4002		REV: -
SHT: 1 OF: 1			

Z:\PROGRAMS\ACADDWG\AIRAMP\LRG\P30-4002.DWG Plotted: Nov 17, 2004 11:29AM