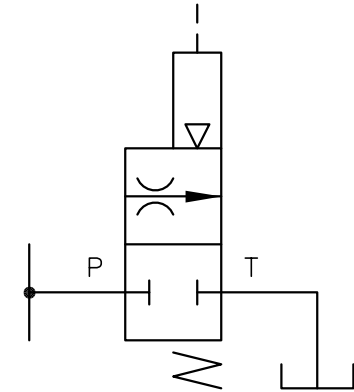
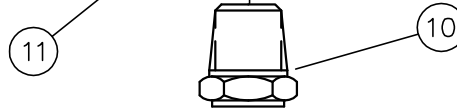
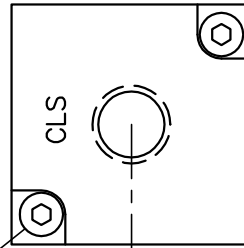
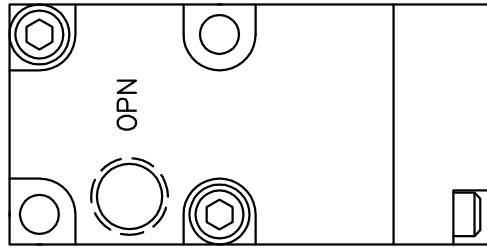
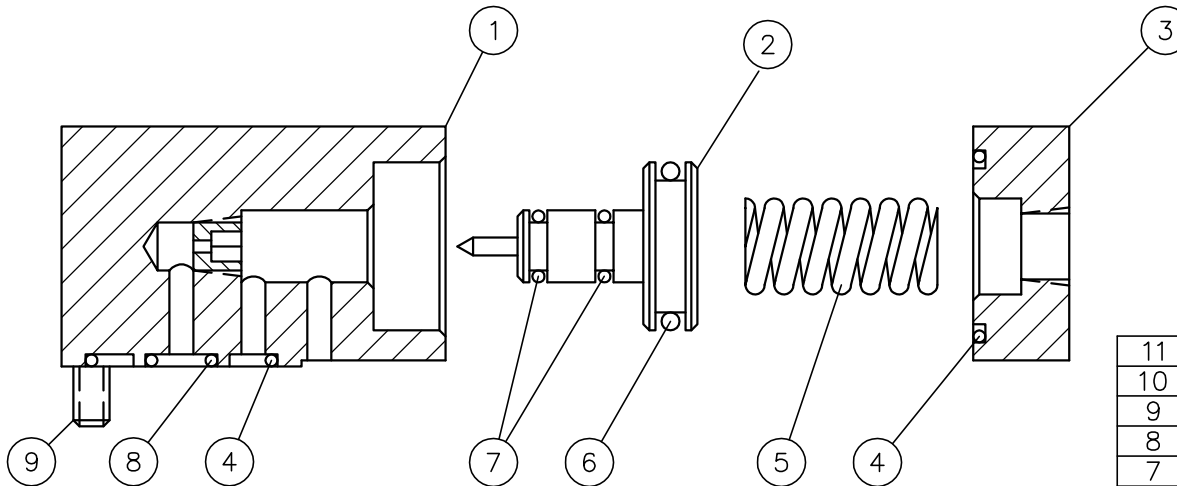


REV	DESCRIPTION	DATE
A	ADDED NEW IDI P/NS; DWG NO WAS EP-450	7/23/01
B	ITEM 5 WAS C0480-063-1000M	2/23/07



NC HYD SYM



11	2	6-32 x .50	SCREW, SOC HD CAP
10	1	10264	BREATHER, 1/8 NPT
9	2	10-24 x .88	SCREW, SOC HD CAP
8	1	SO-010P9	O-RING
7	2	SO-010B7	O-RING
6	1	SO-115B7	O-RING
5	1	10664	COMPRESSION SPRING
4	2	SO-020B7	O-RING
3	1	10284 V02-5002	CAP
2	1	10538 V02-5004	PISTON/NEEDLE
1	1	10113 V02-5001	HOUSING & SEAT
ITEM	QTY	PART NUMBER	DESCRIPTION

DESCRIPTION: A SUBPLATE MOUNTED, NORMALLY CLOSED, ZERO-LEAKAGE, 10,000 PSI HYDRAULIC DUMP VALVE-AIR PILOT OPERATED (65 PSI MIN).



INTERFACE DEVICES, INC.
230 DEPOT ROAD
MILFORD, CT 06460

SCALE: FULL

TITLE: DUMP VALVE ASSY
(NORMALLY CLOSED)

DWN BY: TWH

DATE: 5/12/93

REF:

SHT: 1 OF: 1

DWG NO: V02-1000

REV: B

ASSEMBLY PART NUMBER: 10028